

Wellington Town Square
Wellington, Florida

1 Mile Radius

3 Mile Radius

5 Mile Radius

10 Minute Drive

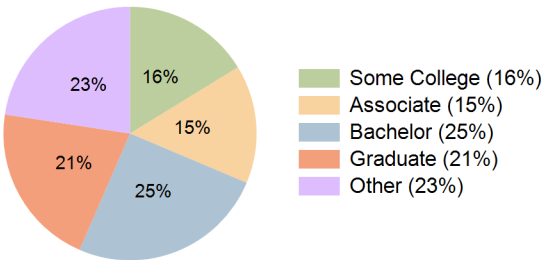
Current Year Demographics

Current Population	11,733	70,751	130,180	54,675
Total Daytime Pop	9,861	68,282	122,973	53,268
Daytime Workers	4,609	35,315	59,184	28,863
Average Household Income	\$127,696	\$170,019	\$162,176	\$156,606
Median Household Income	\$93,988	\$124,403	\$120,212	\$114,463
Total Households	4,373	24,994	46,979	19,651
Median Home Value	\$501,019	\$600,780	\$585,250	\$569,923
Bachelors Degree	20.0%	27.2%	26.2%	25.2%
Graduate Degree	17.0%	21.7%	19.9%	20.9%
Consumer Spending Index	110	144	137	133

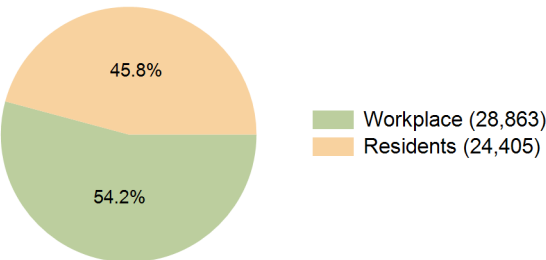
2030 Demographic Projections

Projected Population	11,751	71,547	131,478	55,368
Projected 5 Year Annual Growth Rate (Pop)	0.0%	0.2%	0.2%	0.3%
Projected Households	4,417	25,508	47,830	20,087
Projected 5 Year Annual Growth Rate (HH)	0.2%	0.4%	0.4%	0.4%

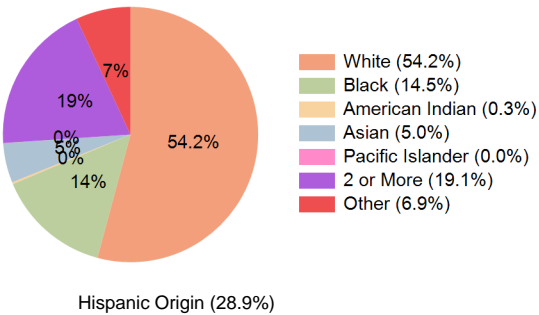
Education (10 Minute Drive)



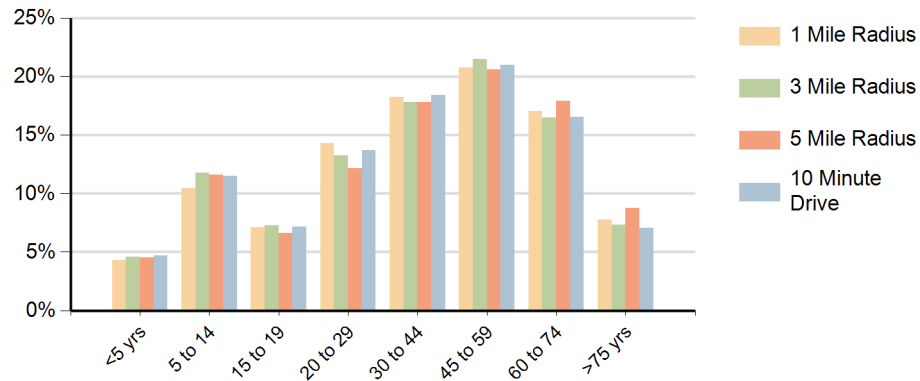
Daytime Population (10 Minute Drive)



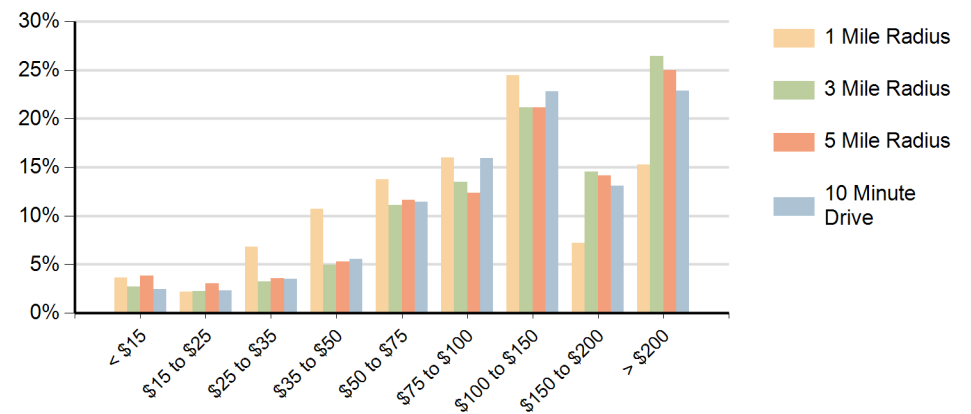
Race (10 Minute Drive)



Population by Age Range



Households by Income Range (\$000)



Wellington Town Square Wellington, Florida		1 Mile Radius	3 Mile Radius	5 Mile Radius	10 Minute Drive
Population	Current Estimated Population	11,733	70,751	130,180	54,675
	2020 Census Population	11,852	70,453	126,471	54,530
	2010 Census Population	11,296	63,103	112,775	48,769
	Historical Annual Growth 2010 to 2020	0.5%	1.1%	1.2%	1.1%
	Estimated Annual Growth 2020 to 2025	-0.2%	0.1%	0.6%	0.1%
	Projected Annual Growth 2025 to 2030	0.0%	0.2%	0.2%	0.3%
Households	Current Estimated Households	4,373	24,994	46,979	19,651
	2020 Census Households	4,349	24,463	44,952	19,257
	2010 Census Households	4,181	21,677	39,612	17,115
	Historical Annual Growth 2010 to 2020	0.4%	1.2%	1.3%	1.2%
	Estimated Annual Growth 2020 to 2025	0.1%	0.4%	0.8%	0.4%
	Projected Annual Growth 2025 to 2030	0.2%	0.4%	0.4%	0.4%
Race	Population per Household	2.7	2.8	2.8	2.8
	White	54.0%	54.7%	55.8%	54.2%
	Black or African American	13.7%	14.4%	15.0%	14.5%
	American Indian	0.3%	0.2%	0.3%	0.3%
	Asian	3.4%	5.7%	5.4%	5.0%
	Pacific Islander	0.0%	0.0%	0.0%	0.0%
	2 or More Races	20.1%	18.5%	17.5%	19.1%
	Other Races	8.4%	6.4%	6.1%	6.9%
Hispanic Origin		32.7%	27.4%	25.9%	28.9%