

Old St Augustine Plaza
Jacksonville, Florida

	1 Mile Radius	3 Mile Radius	5 Mile Radius	10 Minute Drive
--	---------------	---------------	---------------	-----------------

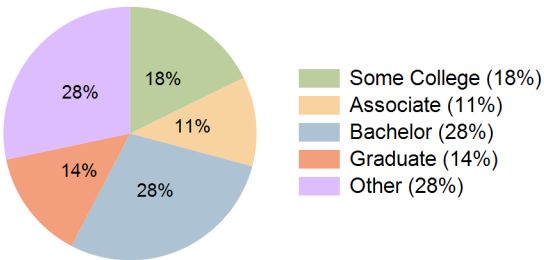
Current Year Demographics

Current Population	14,828	74,057	143,482	86,606
Total Daytime Pop	12,478	69,917	157,903	110,423
Daytime Workers	5,879	36,841	94,918	72,816
Average Household Income	\$92,165	\$119,642	\$118,077	\$111,940
Median Household Income	\$75,457	\$93,999	\$88,922	\$85,911
Total Households	6,308	29,946	59,432	36,486
Median Home Value	\$340,961	\$370,594	\$390,728	\$365,310
Bachelors Degree	25.2%	27.7%	30.1%	28.5%
Graduate Degree	9.2%	14.6%	15.8%	14.0%
Consumer Spending Index	82	106	105	99

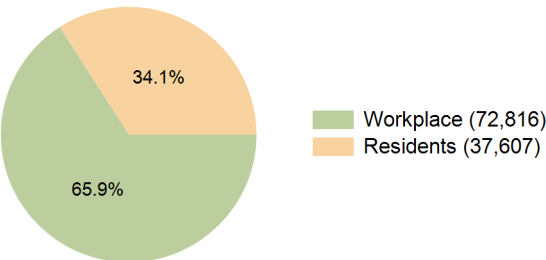
2029 Demographic Projections

Projected Population	14,724	74,144	147,239	87,642
Projected 5 Year Annual Growth Rate (Pop)	-0.1%	0.0%	0.5%	0.2%
Projected Households	6,359	30,479	61,734	37,568
Projected 5 Year Annual Growth Rate (HH)	0.2%	0.4%	0.8%	0.6%

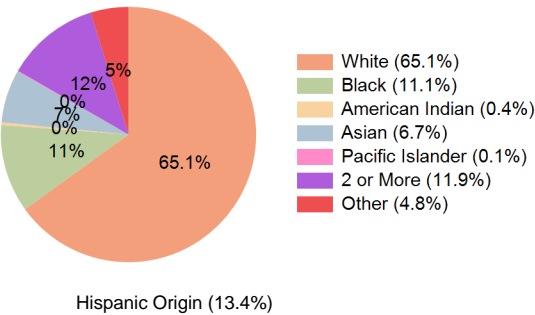
Education (10 Minute Drive)



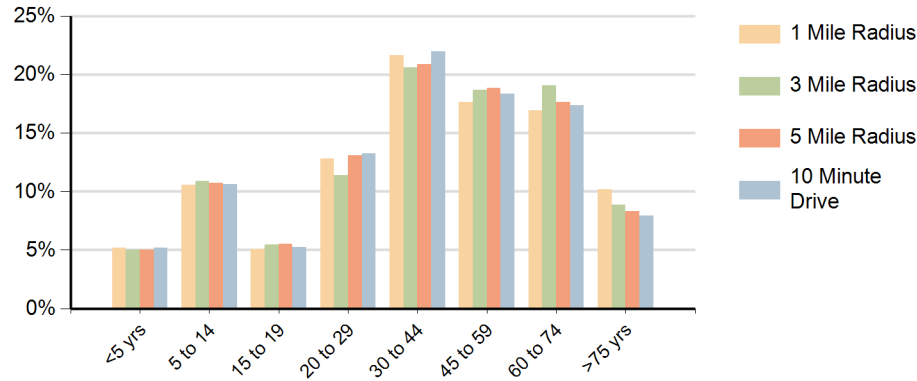
Daytime Population (10 Minute Drive)



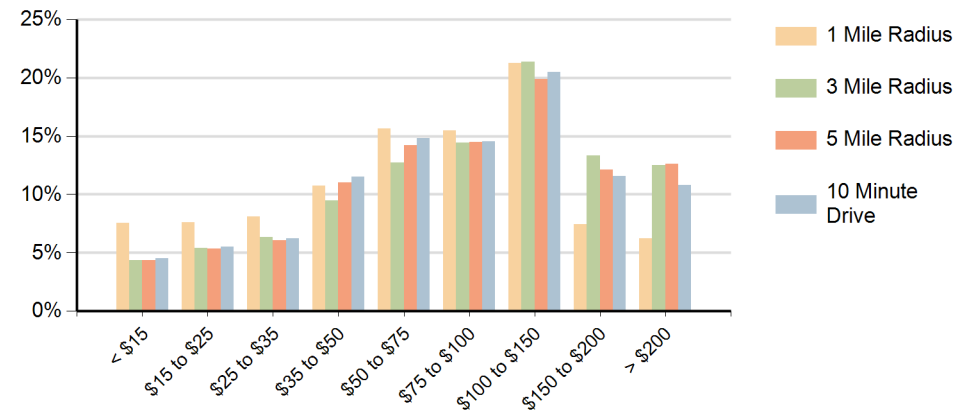
Race (10 Minute Drive)



Population by Age Range



Households by Income Range (\$000)



Old St Augustine Plaza Jacksonville, Florida		1 Mile Radius	3 Mile Radius	5 Mile Radius	10 Minute Drive
Population	Current Estimated Population	14,828	74,057	143,482	86,606
	2020 Census Population	14,938	73,542	141,152	84,659
	2010 Census Population	12,794	65,999	125,717	72,060
	Historical Annual Growth 2010 to 2020	1.6%	1.1%	1.2%	1.6%
	Estimated Annual Growth 2020 to 2024	-0.2%	0.2%	0.4%	0.5%
	Projected Annual Growth 2024 to 2029	-0.1%	0.0%	0.5%	0.2%
Households	Current Estimated Households	6,308	29,946	59,432	36,486
	2020 Census Households	6,318	29,460	57,861	35,299
	2010 Census Households	5,580	26,568	51,933	29,977
	Historical Annual Growth 2010 to 2020	1.3%	1.0%	1.1%	1.7%
	Estimated Annual Growth 2020 to 2024	0.0%	0.4%	0.6%	0.8%
	Projected Annual Growth 2024 to 2029	0.2%	0.4%	0.8%	0.6%
Race	Population per Household	2.3	2.4	2.4	2.3
	White	65.3%	68.6%	66.4%	65.1%
	Black or African American	10.5%	9.4%	10.8%	11.1%
	American Indian	0.3%	0.3%	0.4%	0.4%
	Asian	3.9%	5.4%	6.5%	6.7%
	Pacific Islander	0.1%	0.1%	0.1%	0.1%
	2 or More Races	13.1%	11.6%	11.4%	11.9%
	Other Races	6.7%	4.5%	4.6%	4.8%
Hispanic Origin		15.7%	12.9%	13.1%	13.4%