

Woodcroft Shopping Center  
Durham, North Carolina

1 Mile Radius

3 Mile Radius

5 Mile Radius

10 Minute Drive

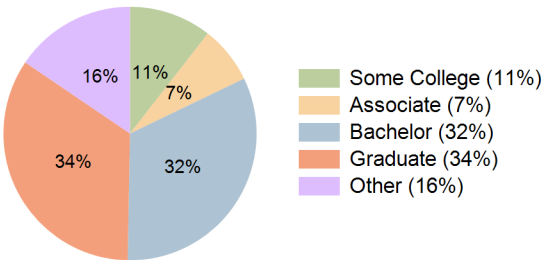
Current Year Demographics

Current Population	6,155	65,390	145,204	87,806
Total Daytime Pop	5,913	60,580	158,508	87,065
Daytime Workers	3,428	33,691	93,577	50,065
Average Household Income	\$145,878	\$130,588	\$129,079	\$124,125
Median Household Income	\$101,102	\$97,539	\$90,415	\$89,494
Total Households	2,984	29,974	62,540	39,963
Median Home Value	\$419,969	\$425,161	\$440,568	\$419,106
Bachelors Degree	35.2%	33.1%	31.6%	32.4%
Graduate Degree	45.0%	37.0%	35.8%	34.2%
Consumer Spending Index	128	116	114	110

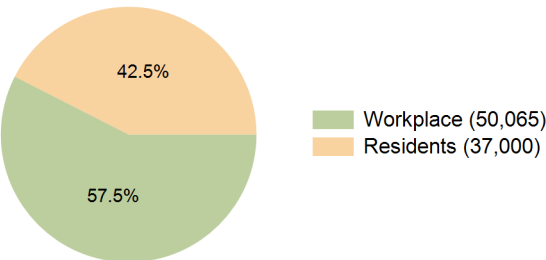
2029 Demographic Projections

Projected Population	6,051	67,089	152,101	90,553
Projected 5 Year Annual Growth Rate (Pop)	-0.3%	0.5%	0.9%	0.6%
Projected Households	2,978	31,310	66,445	41,836
Projected 5 Year Annual Growth Rate (HH)	0.0%	0.9%	1.2%	0.9%

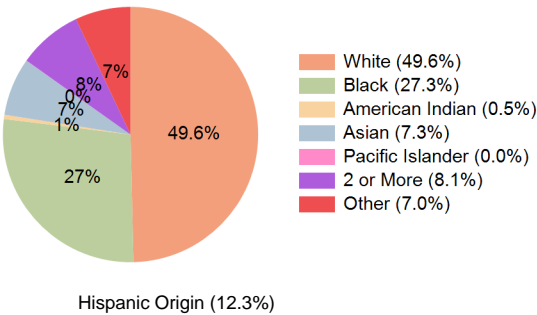
Education (10 Minute Drive)



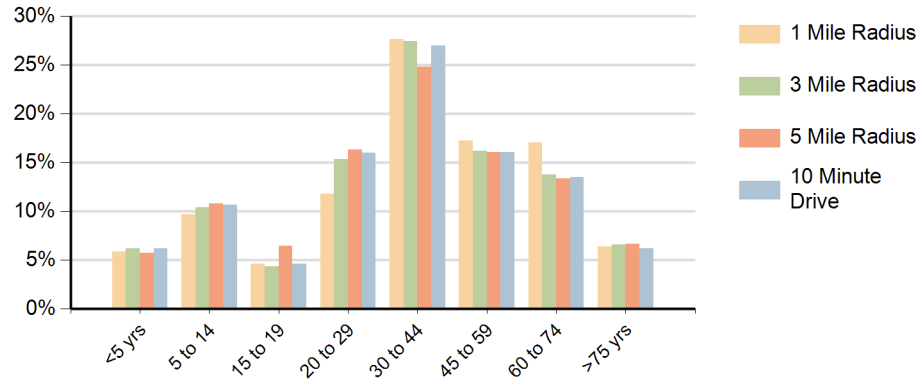
Daytime Population (10 Minute Drive)



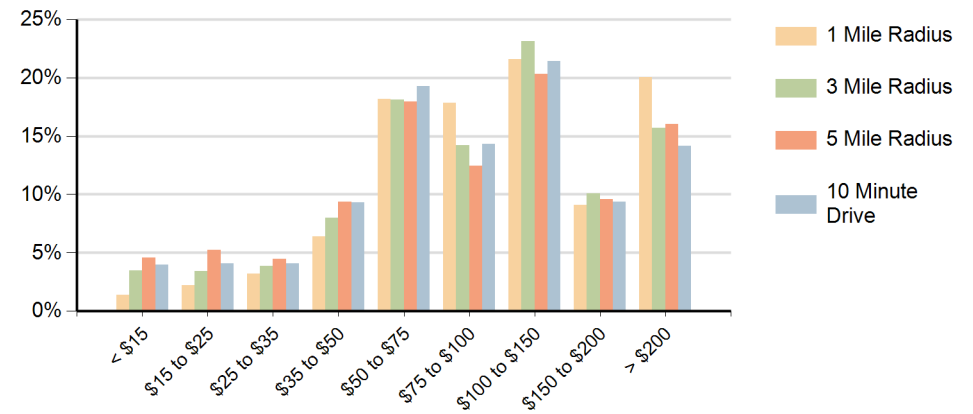
Race (10 Minute Drive)



### Population by Age Range



### Households by Income Range (\$000)



Woodcroft Shopping Center Durham, North Carolina		1 Mile Radius	3 Mile Radius	5 Mile Radius	10 Minute Drive
Population	Current Estimated Population	6,155	65,390	145,204	87,806
	2020 Census Population	6,064	63,422	138,210	84,481
	2010 Census Population	5,827	54,614	120,311	73,227
	Historical Annual Growth 2010 to 2020	0.4%	1.5%	1.4%	1.4%
	Estimated Annual Growth 2020 to 2024	0.4%	0.7%	1.2%	0.9%
	Projected Annual Growth 2024 to 2029	-0.3%	0.5%	0.9%	0.6%
Households	Current Estimated Households	2,984	29,974	62,540	39,963
	2020 Census Households	2,975	28,948	59,136	38,258
	2010 Census Households	2,767	24,769	51,180	32,812
	Historical Annual Growth 2010 to 2020	0.7%	1.6%	1.5%	1.6%
	Estimated Annual Growth 2020 to 2024	0.1%	0.8%	1.3%	1.0%
	Projected Annual Growth 2024 to 2029	0.0%	0.9%	1.2%	0.9%
Race	Population per Household	2.1	2.2	2.2	2.2
	White	67.1%	53.2%	49.1%	49.6%
	Black or African American	17.4%	24.5%	27.3%	27.3%
	American Indian	0.3%	0.4%	0.5%	0.5%
	Asian	5.3%	7.7%	8.3%	7.3%
	Pacific Islander	0.0%	0.0%	0.0%	0.0%
	2 or More Races	7.1%	8.2%	8.1%	8.1%
	Other Races	2.8%	5.9%	6.8%	7.0%
Hispanic Origin		6.5%	10.9%	11.9%	12.3%