

Carmel Commons  
Charlotte, North Carolina

1 Mile Radius

3 Mile Radius

5 Mile Radius

10 Minute Drive

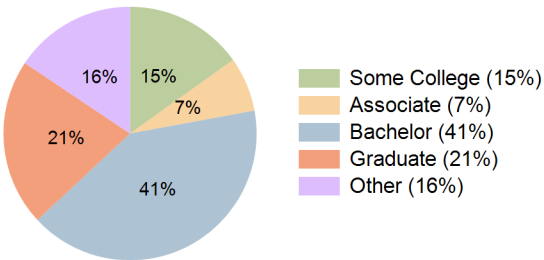
Current Year Demographics

Current Population	11,697	78,281	218,666	66,853
Total Daytime Pop	15,743	98,499	250,867	91,874
Daytime Workers	11,128	64,571	151,461	62,465
Average Household Income	\$107,320	\$145,775	\$160,436	\$150,756
Median Household Income	\$74,197	\$98,425	\$111,448	\$102,630
Total Households	5,437	33,882	88,999	29,060
Median Home Value	\$396,744	\$485,580	\$499,395	\$491,785
Bachelors Degree	32.6%	39.8%	39.2%	41.0%
Graduate Degree	18.0%	20.1%	23.4%	21.3%
Consumer Spending Index	96	129	141	133

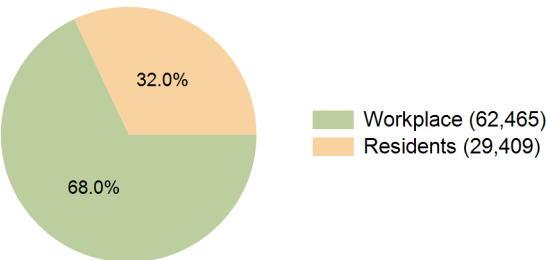
2029 Demographic Projections

Projected Population	12,014	78,547	221,935	67,038
Projected 5 Year Annual Growth Rate (Pop)	0.5%	0.1%	0.3%	0.1%
Projected Households	5,641	34,236	90,762	29,348
Projected 5 Year Annual Growth Rate (HH)	0.7%	0.2%	0.4%	0.2%

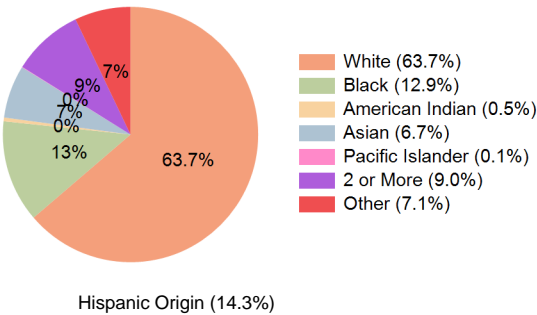
Education (10 Minute Drive)



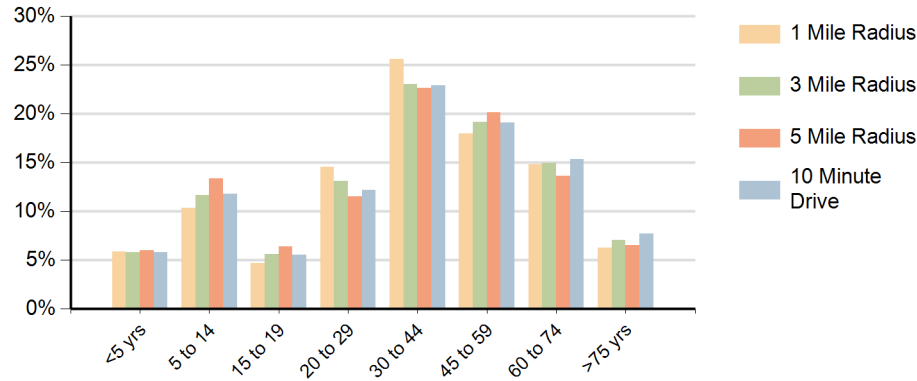
Daytime Population (10 Minute Drive)



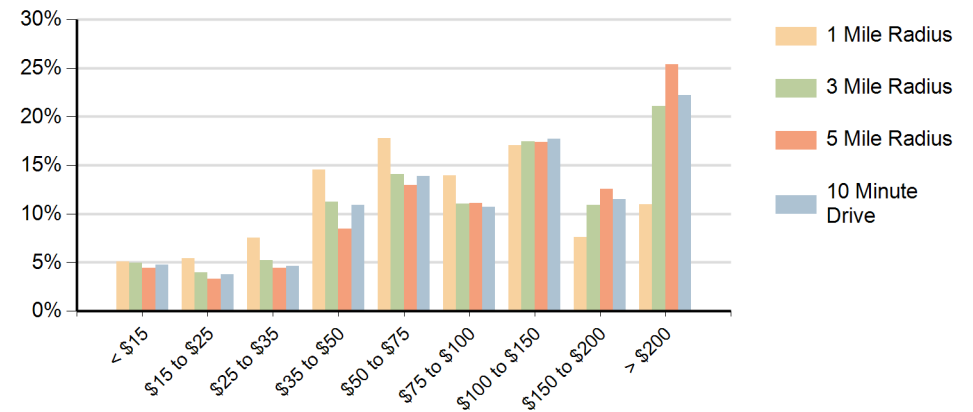
Race (10 Minute Drive)



### Population by Age Range



### Households by Income Range (\$000)



Carmel Commons Charlotte, North Carolina		1 Mile Radius	3 Mile Radius	5 Mile Radius	10 Minute Drive
Population	Current Estimated Population	11,697	78,281	218,666	66,853
	2020 Census Population	11,817	77,356	211,879	66,698
	2010 Census Population	11,866	70,718	175,386	60,961
	Historical Annual Growth 2010 to 2020	0.0%	0.9%	1.9%	0.9%
	Estimated Annual Growth 2020 to 2024	-0.2%	0.3%	0.7%	0.1%
	Projected Annual Growth 2024 to 2029	0.5%	0.1%	0.3%	0.1%
Households	Current Estimated Households	5,437	33,882	88,999	29,060
	2020 Census Households	5,490	33,185	85,984	28,762
	2010 Census Households	5,570	30,957	72,718	27,008
	Historical Annual Growth 2010 to 2020	-0.1%	0.7%	1.7%	0.6%
	Estimated Annual Growth 2020 to 2024	-0.2%	0.5%	0.8%	0.2%
	Projected Annual Growth 2024 to 2029	0.7%	0.2%	0.4%	0.2%
Race	Population per Household	2.1	2.3	2.5	2.3
	White	56.8%	59.9%	59.9%	63.7%
	Black or African American	17.5%	14.3%	12.4%	12.9%
	American Indian	0.7%	0.6%	0.6%	0.5%
	Asian	4.0%	7.0%	10.3%	6.7%
	Pacific Islander	0.1%	0.1%	0.1%	0.1%
	2 or More Races	10.4%	9.5%	9.2%	9.0%
	Other Races	10.7%	8.7%	7.6%	7.1%
Hispanic Origin		19.4%	16.8%	15.1%	14.3%