

Gardens Square
Hialeah, Florida

1 Mile Radius

3 Mile Radius

5 Mile Radius

10 Minute Drive

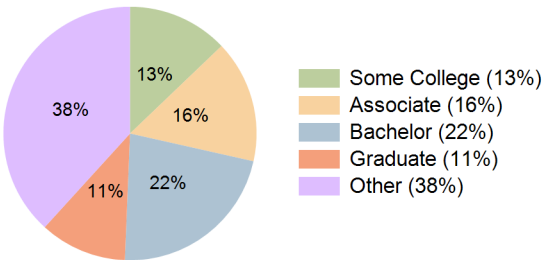
Current Year Demographics

Current Population	17,747	140,802	385,225	106,698
Total Daytime Pop	15,012	109,468	326,589	88,672
Daytime Workers	7,025	47,616	151,812	41,498
Average Household Income	\$132,754	\$114,201	\$101,107	\$108,568
Median Household Income	\$107,775	\$91,026	\$77,552	\$84,622
Total Households	5,261	46,946	131,288	35,412
Median Home Value	\$499,795	\$494,108	\$446,034	\$474,759
Bachelors Degree	21.6%	24.9%	21.9%	22.1%
Graduate Degree	12.8%	13.5%	11.2%	11.1%
Consumer Spending Index	115	101	90	96

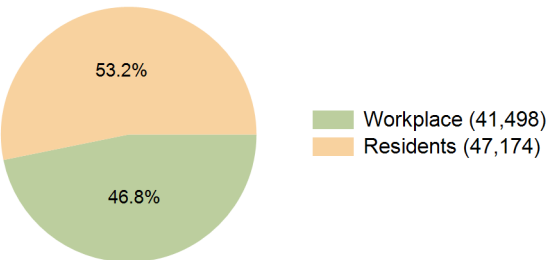
2029 Demographic Projections

Projected Population	18,596	141,417	384,572	106,301
Projected 5 Year Annual Growth Rate (Pop)	0.9%	0.1%	0.0%	-0.1%
Projected Households	5,668	47,974	133,351	36,016
Projected 5 Year Annual Growth Rate (HH)	1.5%	0.4%	0.3%	0.3%

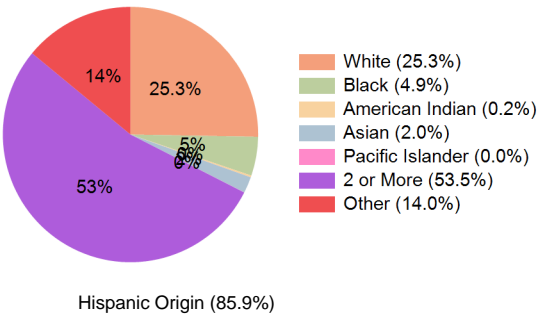
Education (10 Minute Drive)



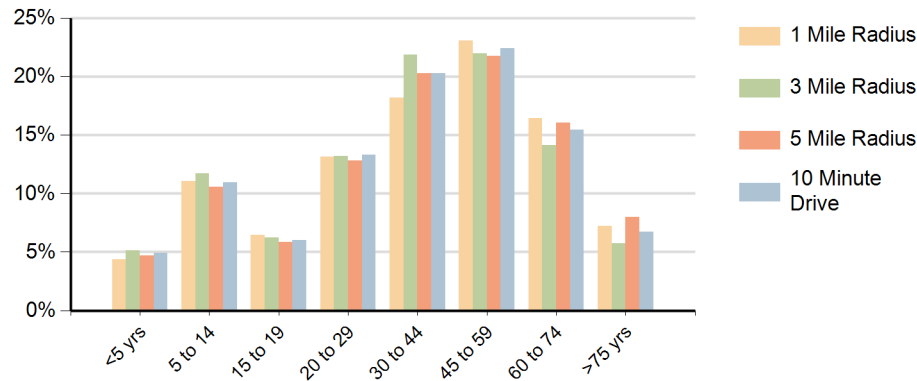
Daytime Population (10 Minute Drive)



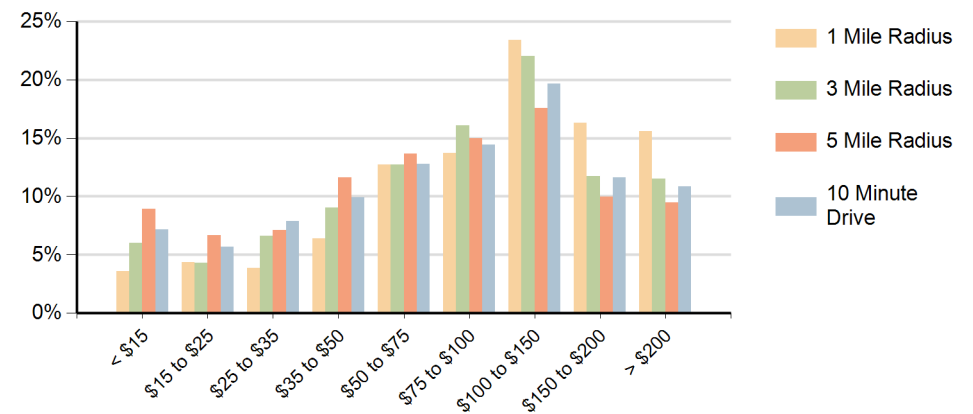
Race (10 Minute Drive)



Population by Age Range



Households by Income Range (\$000)



Gardens Square Hialeah, Florida		1 Mile Radius	3 Mile Radius	5 Mile Radius	10 Minute Drive
Population	Current Estimated Population	17,747	140,802	385,225	106,698
	2020 Census Population	17,805	136,623	380,301	103,842
	2010 Census Population	18,240	122,968	354,700	100,831
	Historical Annual Growth 2010 to 2020	-0.2%	1.1%	0.7%	0.3%
	Estimated Annual Growth 2020 to 2024	-0.1%	0.7%	0.3%	0.6%
	Projected Annual Growth 2024 to 2029	0.9%	0.1%	0.0%	-0.1%
Households	Current Estimated Households	5,261	46,946	131,288	35,412
	2020 Census Households	5,235	45,141	127,898	34,002
	2010 Census Households	5,116	39,512	114,642	31,731
	Historical Annual Growth 2010 to 2020	0.2%	1.3%	1.1%	0.7%
	Estimated Annual Growth 2020 to 2024	0.1%	0.9%	0.6%	1.0%
	Projected Annual Growth 2024 to 2029	1.5%	0.4%	0.3%	0.3%
Race	Population per Household	3.4	3.0	2.9	3.0
	White	27.0%	24.3%	23.9%	25.3%
	Black or African American	3.9%	9.6%	13.0%	4.9%
	American Indian	0.3%	0.3%	0.2%	0.2%
	Asian	1.7%	3.7%	3.4%	2.0%
	Pacific Islander	0.0%	0.0%	0.0%	0.0%
	2 or More Races	55.6%	48.4%	46.4%	53.5%
	Other Races	11.4%	13.8%	13.0%	14.0%
Hispanic Origin		85.9%	78.1%	74.7%	85.9%