

Pine Tree Plaza  
Orange Park, Florida

1 Mile Radius

3 Mile Radius

5 Mile Radius

10 Minute Drive

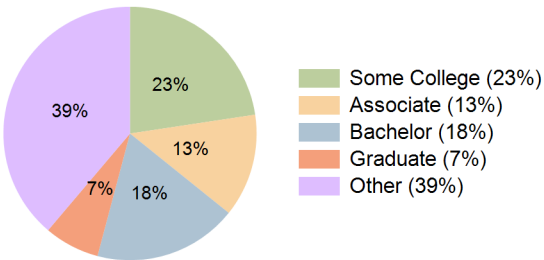
Current Year Demographics

Current Population	10,356	59,055	144,296	49,488
Total Daytime Pop	11,315	56,361	127,445	52,871
Daytime Workers	6,372	29,124	58,683	29,845
Average Household Income	\$95,179	\$90,732	\$100,620	\$91,404
Median Household Income	\$82,982	\$78,153	\$84,568	\$78,786
Total Households	3,977	23,338	54,797	19,698
Median Home Value	\$301,271	\$301,123	\$315,879	\$295,063
Bachelors Degree	19.1%	17.5%	20.8%	18.4%
Graduate Degree	8.3%	8.0%	9.4%	7.1%
Consumer Spending Index	84	81	90	82

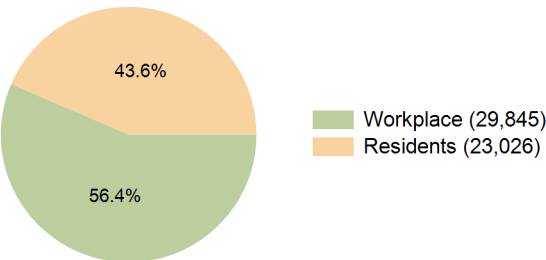
2029 Demographic Projections

Projected Population	10,326	60,104	148,224	49,665
Projected 5 Year Annual Growth Rate (Pop)	-0.1%	0.4%	0.5%	0.1%
Projected Households	4,050	24,213	57,317	20,183
Projected 5 Year Annual Growth Rate (HH)	0.4%	0.7%	0.9%	0.5%

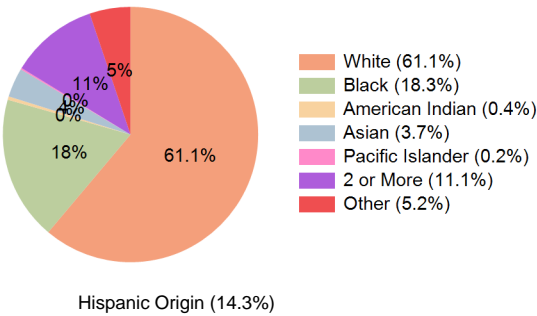
Education (10 Minute Drive)



Daytime Population (10 Minute Drive)

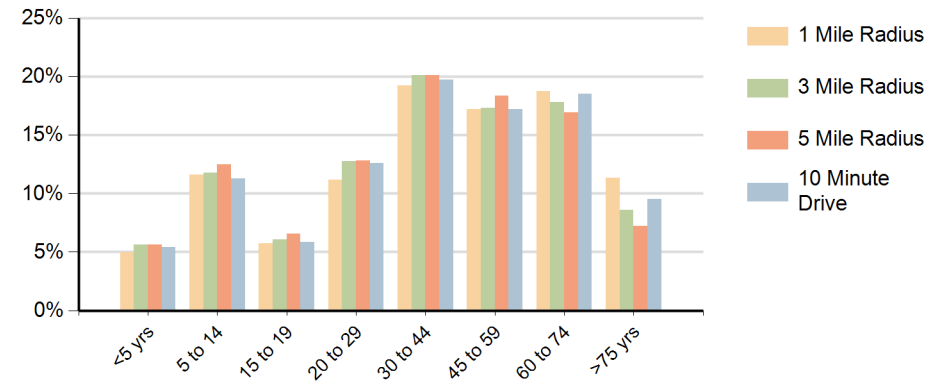


Race (10 Minute Drive)

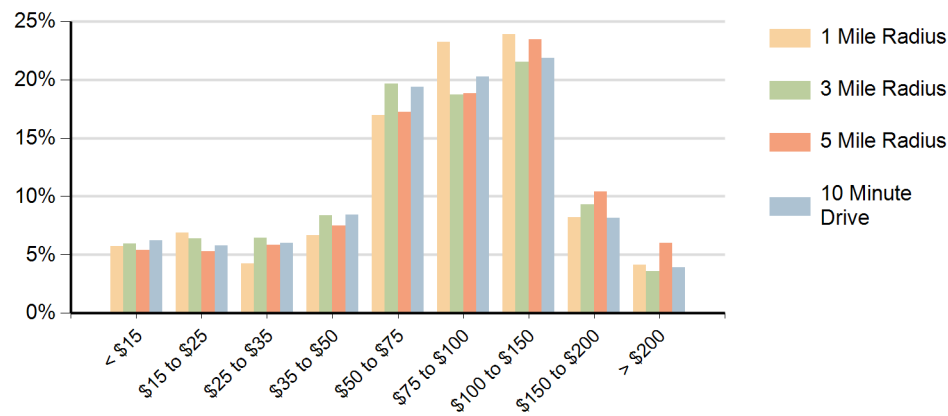


Hispanic Origin (14.3%)

Population by Age Range



Households by Income Range (\$000)



Pine Tree Plaza Orange Park, Florida		1 Mile Radius	3 Mile Radius	5 Mile Radius	10 Minute Drive
Population	Current Estimated Population	10,356	59,055	144,296	49,488
	2020 Census Population	10,506	57,455	141,408	49,344
	2010 Census Population	9,846	53,772	132,474	47,052
	Historical Annual Growth 2010 to 2020	0.7%	0.7%	0.7%	0.5%
	Estimated Annual Growth 2020 to 2024	-0.3%	0.7%	0.5%	0.1%
	Projected Annual Growth 2024 to 2029	-0.1%	0.4%	0.5%	0.1%
Households	Current Estimated Households	3,977	23,338	54,797	19,698
	2020 Census Households	3,936	22,259	52,767	19,231
	2010 Census Households	3,708	20,750	48,659	18,205
	Historical Annual Growth 2010 to 2020	0.6%	0.7%	0.8%	0.6%
	Estimated Annual Growth 2020 to 2024	0.2%	1.1%	0.9%	0.6%
	Projected Annual Growth 2024 to 2029	0.4%	0.7%	0.9%	0.5%
Race	Population per Household	2.5	2.5	2.6	2.5
	White	62.9%	57.5%	55.4%	61.1%
	Black or African American	14.0%	21.3%	22.6%	18.3%
	American Indian	0.5%	0.4%	0.4%	0.4%
	Asian	4.4%	4.1%	4.9%	3.7%
	Pacific Islander	0.2%	0.2%	0.2%	0.2%
	2 or More Races	12.8%	11.1%	11.0%	11.1%
	Other Races	5.2%	5.4%	5.5%	5.2%
Hispanic Origin		15.6%	14.6%	14.7%	14.3%