

Gateway Shopping Center
Wayne, Pennsylvania

1 Mile Radius

3 Mile Radius

5 Mile Radius

10 Minute Drive

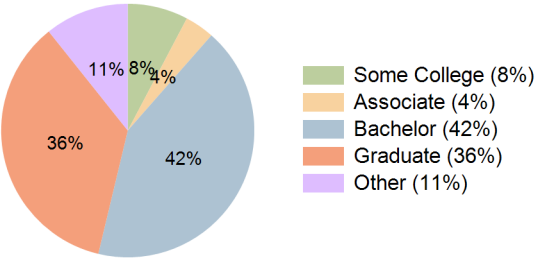
Current Year Demographics

Current Population	5,324	51,218	128,030	53,710
Total Daytime Pop	7,725	96,650	211,428	103,460
Daytime Workers	5,602	73,937	153,575	80,098
Average Household Income	\$203,342	\$204,201	\$192,403	\$192,216
Median Household Income	\$146,906	\$143,286	\$133,162	\$132,016
Total Households	2,155	21,584	51,271	22,831
Median Home Value	\$670,349	\$650,156	\$602,032	\$623,224
Bachelors Degree	44.4%	42.1%	38.3%	42.3%
Graduate Degree	39.3%	37.5%	33.4%	35.5%
Consumer Spending Index	173	175	166	165

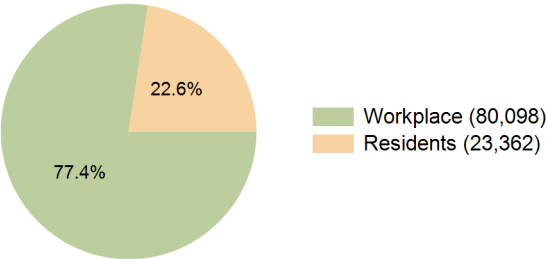
2029 Demographic Projections

Projected Population	5,566	52,433	129,722	54,941
Projected 5 Year Annual Growth Rate (Pop)	0.9%	0.5%	0.3%	0.5%
Projected Households	2,289	22,264	52,495	23,534
Projected 5 Year Annual Growth Rate (HH)	1.2%	0.6%	0.5%	0.6%

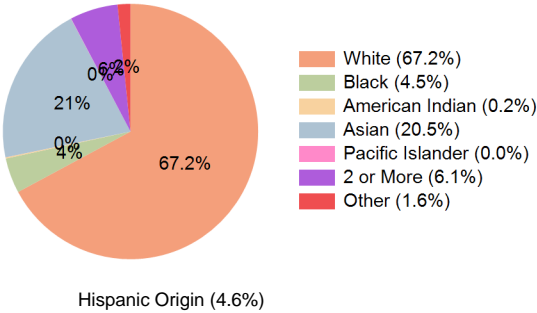
Education (10 Minute Drive)



Daytime Population (10 Minute Drive)

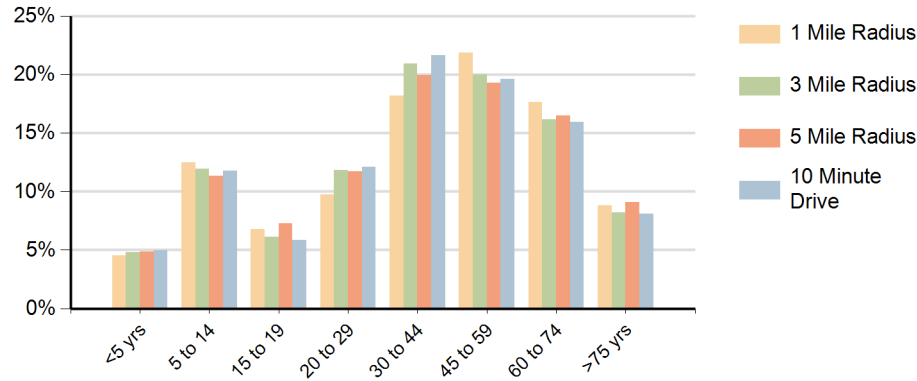


Race (10 Minute Drive)

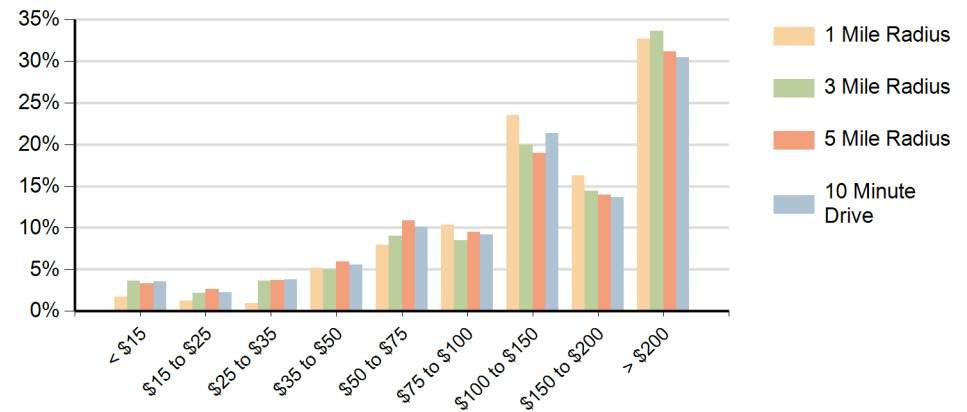


Hispanic Origin (4.6%)

Population by Age Range



Households by Income Range (\$000)



Gateway Shopping Center Wayne, Pennsylvania		1 Mile Radius	3 Mile Radius	5 Mile Radius	10 Minute Drive
Population	Current Estimated Population	5,324	51,218	128,030	53,710
	2020 Census Population	5,256	49,442	124,911	51,759
	2010 Census Population	4,740	42,306	113,463	44,836
	Historical Annual Growth 2010 to 2020	1.0%	1.6%	1.0%	1.5%
	Estimated Annual Growth 2020 to 2024	0.3%	0.8%	0.6%	0.9%
	Projected Annual Growth 2024 to 2029	0.9%	0.5%	0.3%	0.5%
Households	Current Estimated Households	2,155	21,584	51,271	22,831
	2020 Census Households	2,119	20,700	49,672	21,896
	2010 Census Households	2,072	17,933	45,366	19,303
	Historical Annual Growth 2010 to 2020	0.2%	1.5%	0.9%	1.3%
	Estimated Annual Growth 2020 to 2024	0.4%	1.0%	0.8%	1.0%
	Projected Annual Growth 2024 to 2029	1.2%	0.6%	0.5%	0.6%
Race	Population per Household	2.5	2.4	2.4	2.3
	White	69.8%	69.1%	71.3%	67.2%
	Black or African American	1.8%	4.0%	4.7%	4.5%
	American Indian	0.1%	0.1%	0.2%	0.2%
	Asian	21.6%	19.5%	16.1%	20.5%
	Pacific Islander	0.0%	0.0%	0.0%	0.0%
	2 or More Races	5.9%	5.9%	6.0%	6.1%
	Other Races	0.8%	1.4%	1.8%	1.6%
Hispanic Origin		3.5%	4.2%	4.8%	4.6%