

Fleming Island Orange Park, Florida	1 Mile Radius	3 Mile Radius	5 Mile Radius	10 Minute Drive
--	---------------	---------------	---------------	-----------------

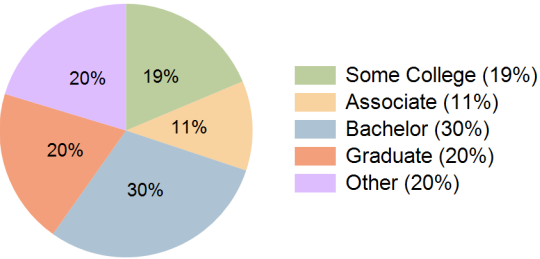
Current Year Demographics

Current Population	6,726	28,626	82,964	29,125
Total Daytime Pop	10,153	25,895	72,876	27,841
Daytime Workers	6,837	11,754	32,318	13,387
Average Household Income	\$150,328	\$143,722	\$126,596	\$142,379
Median Household Income	\$121,793	\$113,179	\$102,116	\$111,075
Total Households	2,573	10,907	31,456	11,158
Median Home Value	\$387,854	\$406,183	\$377,090	\$397,166
Bachelors Degree	28.8%	29.0%	24.7%	29.7%
Graduate Degree	22.5%	21.1%	14.7%	19.9%
Consumer Spending Index	129	125	111	124

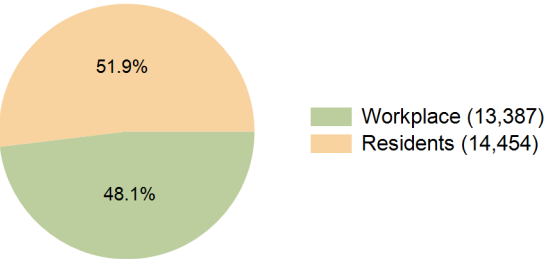
2029 Demographic Projections

Projected Population	6,823	29,170	84,743	29,759
Projected 5 Year Annual Growth Rate (Pop)	0.3%	0.4%	0.4%	0.4%
Projected Households	2,666	11,394	32,758	11,688
Projected 5 Year Annual Growth Rate (HH)	0.7%	0.9%	0.8%	0.9%

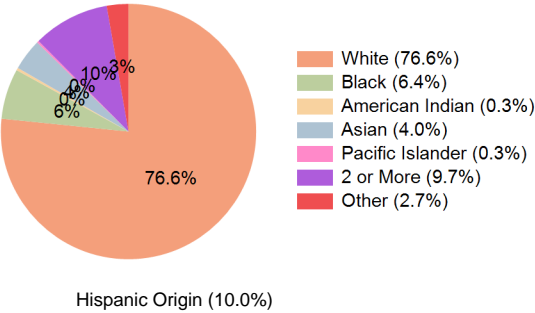
Education (10 Minute Drive)



Daytime Population (10 Minute Drive)

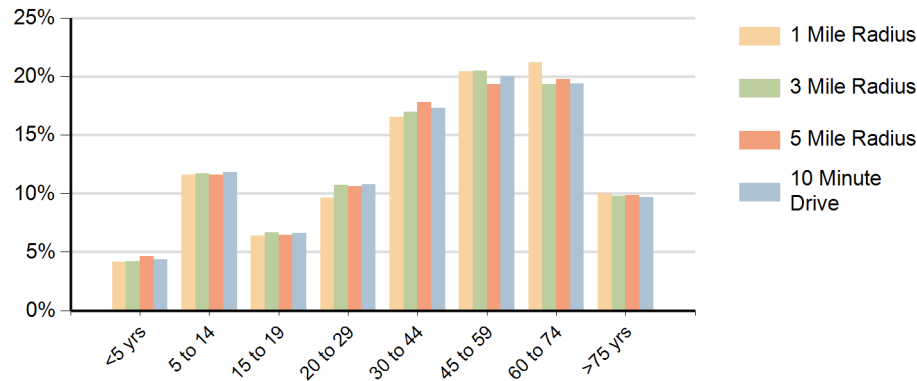


Race (10 Minute Drive)

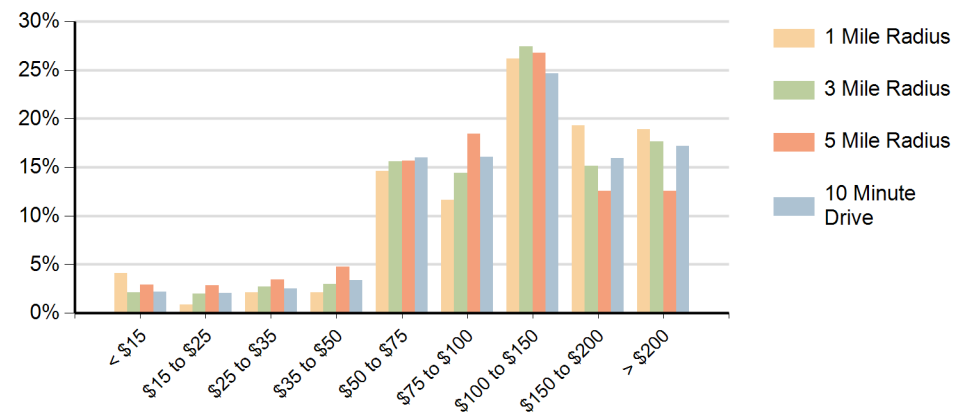


Hispanic Origin (10.0%)

Population by Age Range



Households by Income Range (\$000)



Fleming Island Orange Park, Florida		1 Mile Radius	3 Mile Radius	5 Mile Radius	10 Minute Drive
Population	Current Estimated Population	6,726	28,626	82,964	29,125
	2020 Census Population	6,681	28,232	81,979	28,607
	2010 Census Population	6,155	26,333	77,038	26,644
	Historical Annual Growth 2010 to 2020	0.8%	0.7%	0.6%	0.7%
	Estimated Annual Growth 2020 to 2024	0.2%	0.3%	0.3%	0.4%
	Projected Annual Growth 2024 to 2029	0.3%	0.4%	0.4%	0.4%
Households	Current Estimated Households	2,573	10,907	31,456	11,158
	2020 Census Households	2,507	10,586	30,569	10,784
	2010 Census Households	2,248	9,604	28,288	9,753
	Historical Annual Growth 2010 to 2020	1.1%	1.0%	0.8%	1.0%
	Estimated Annual Growth 2020 to 2024	0.6%	0.7%	0.7%	0.8%
	Projected Annual Growth 2024 to 2029	0.7%	0.9%	0.8%	0.9%
Race	Population per Household	2.6	2.6	2.6	2.6
	White	78.6%	77.0%	74.0%	76.6%
	Black or African American	4.8%	5.9%	8.5%	6.4%
	American Indian	0.3%	0.3%	0.3%	0.3%
	Asian	4.5%	4.4%	3.7%	4.0%
	Pacific Islander	0.0%	0.2%	0.2%	0.3%
	2 or More Races	9.7%	9.7%	10.1%	9.7%
	Other Races	2.1%	2.6%	3.3%	2.7%
Hispanic Origin		9.6%	9.9%	11.1%	10.0%