

Pike Creek
Wilmington, Delaware

1 Mile Radius

3 Mile Radius

5 Mile Radius

10 Minute Drive

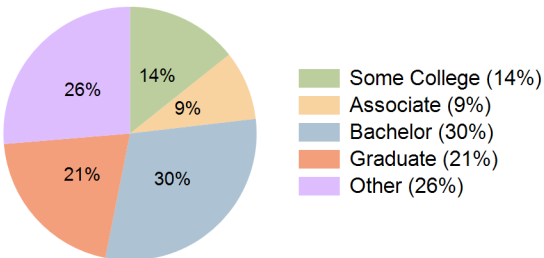
Current Year Demographics

Current Population	10,610	62,634	136,833	62,432
Total Daytime Pop	8,850	51,417	150,687	48,856
Daytime Workers	4,026	21,699	83,802	19,664
Average Household Income	\$135,740	\$142,698	\$135,925	\$145,409
Median Household Income	\$103,840	\$106,403	\$97,995	\$107,070
Total Households	4,667	25,562	54,095	25,293
Median Home Value	\$416,449	\$409,870	\$397,687	\$412,214
Bachelors Degree	34.3%	30.3%	27.2%	30.0%
Graduate Degree	24.5%	20.3%	19.6%	20.6%
Consumer Spending Index	118	125	119	127

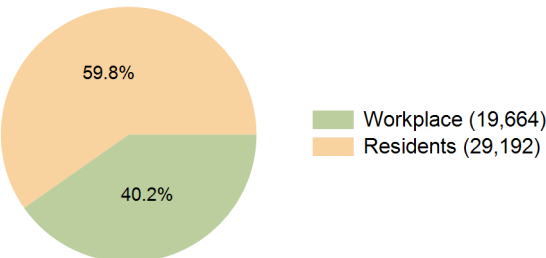
2029 Demographic Projections

Projected Population	10,244	60,771	134,402	60,549
Projected 5 Year Annual Growth Rate (Pop)	-0.7%	-0.6%	-0.4%	-0.6%
Projected Households	4,617	25,438	54,523	25,160
Projected 5 Year Annual Growth Rate (HH)	-0.2%	-0.1%	0.2%	-0.1%

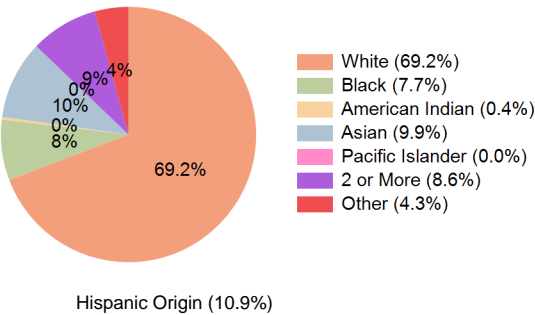
Education (10 Minute Drive)



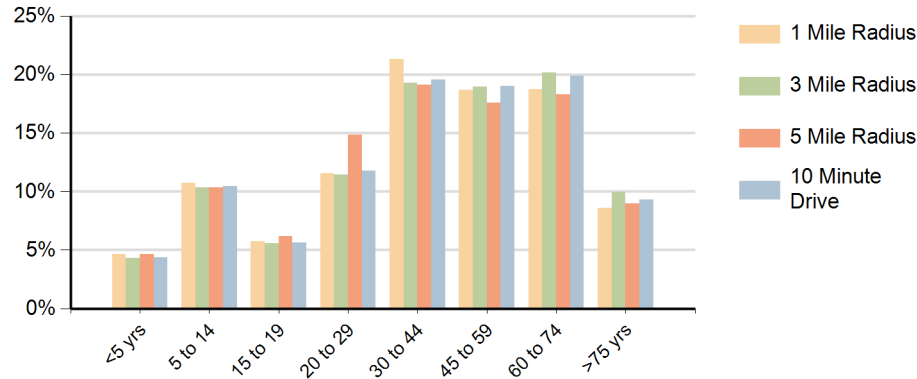
Daytime Population (10 Minute Drive)



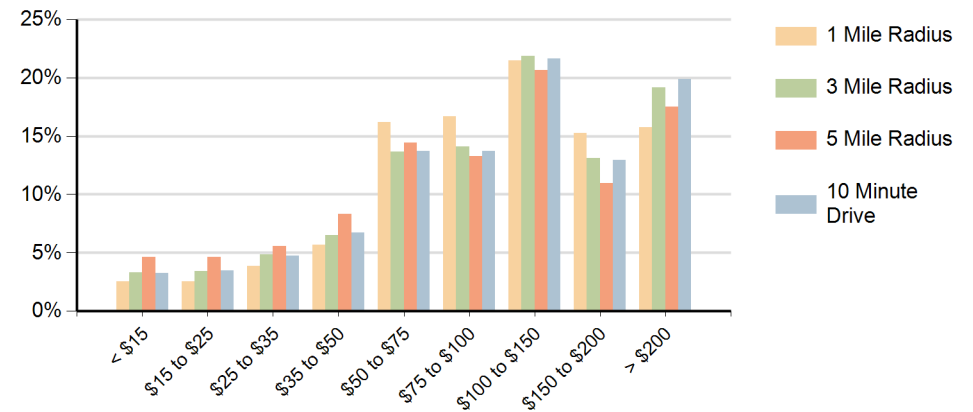
Race (10 Minute Drive)



Population by Age Range



Households by Income Range (\$000)



Pike Creek Wilmington, Delaware		1 Mile Radius	3 Mile Radius	5 Mile Radius	10 Minute Drive
Population	Current Estimated Population	10,610	62,634	136,833	62,432
	2020 Census Population	10,743	63,310	138,183	63,385
	2010 Census Population	10,288	62,256	137,120	62,606
	Historical Annual Growth 2010 to 2020	0.4%	0.2%	0.1%	0.1%
	Estimated Annual Growth 2020 to 2024	-0.3%	-0.3%	-0.2%	-0.4%
	Projected Annual Growth 2024 to 2029	-0.7%	-0.6%	-0.4%	-0.6%
Households	Current Estimated Households	4,667	25,562	54,095	25,293
	2020 Census Households	4,692	25,527	53,699	25,291
	2010 Census Households	4,534	24,712	51,887	24,416
	Historical Annual Growth 2010 to 2020	0.3%	0.3%	0.3%	0.4%
	Estimated Annual Growth 2020 to 2024	-0.1%	0.0%	0.2%	0.0%
	Projected Annual Growth 2024 to 2029	-0.2%	-0.1%	0.2%	-0.1%
Race	Population per Household	2.2	2.4	2.4	2.4
	White	66.4%	70.3%	65.8%	69.2%
	Black or African American	7.9%	7.0%	10.8%	7.7%
	American Indian	0.2%	0.3%	0.4%	0.4%
	Asian	16.5%	9.8%	8.5%	9.9%
	Pacific Islander	0.0%	0.0%	0.0%	0.0%
	2 or More Races	7.1%	8.6%	9.1%	8.6%
	Other Races	1.8%	4.1%	5.5%	4.3%
Hispanic Origin		6.3%	10.6%	13.0%	10.9%