

Prestonbrook Crossing
Frisco, Texas

1 Mile Radius

3 Mile Radius

5 Mile Radius

10 Minute Drive

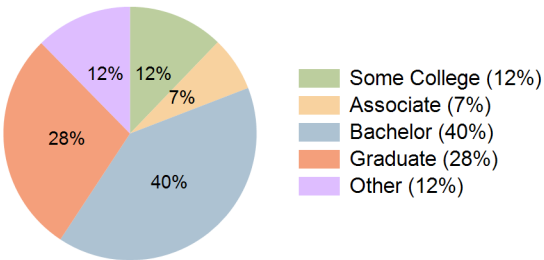
Current Year Demographics

Current Population	16,276	100,128	311,184	145,248
Total Daytime Pop	14,428	118,874	353,870	171,633
Daytime Workers	7,337	73,602	209,326	104,525
Average Household Income	\$115,519	\$158,313	\$182,544	\$166,907
Median Household Income	\$88,031	\$117,850	\$144,745	\$126,177
Total Households	6,763	39,152	110,430	54,739
Median Home Value	\$388,685	\$572,811	\$580,840	\$596,671
Bachelors Degree	29.8%	38.4%	41.1%	40.1%
Graduate Degree	20.5%	26.1%	29.2%	28.4%
Consumer Spending Index	102	139	159	146

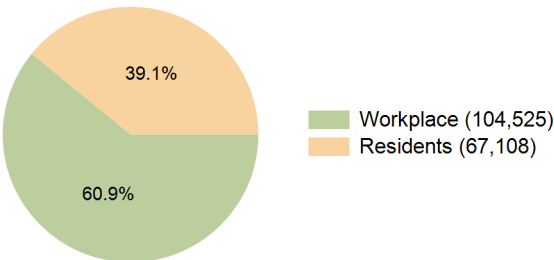
2029 Demographic Projections

Projected Population	16,181	108,483	328,693	158,280
Projected 5 Year Annual Growth Rate (Pop)	-0.1%	1.6%	1.1%	1.7%
Projected Households	6,805	43,232	118,650	60,008
Projected 5 Year Annual Growth Rate (HH)	0.1%	2.0%	1.5%	1.9%

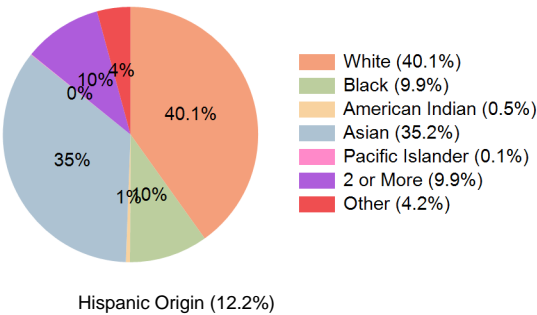
Education (10 Minute Drive)



Daytime Population (10 Minute Drive)

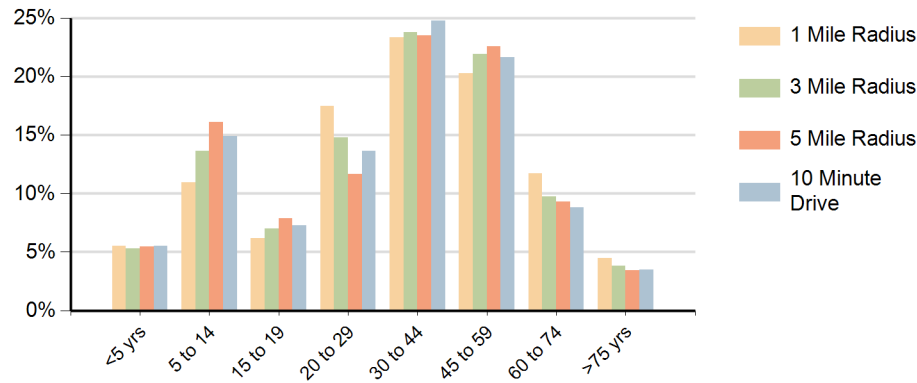


Race (10 Minute Drive)

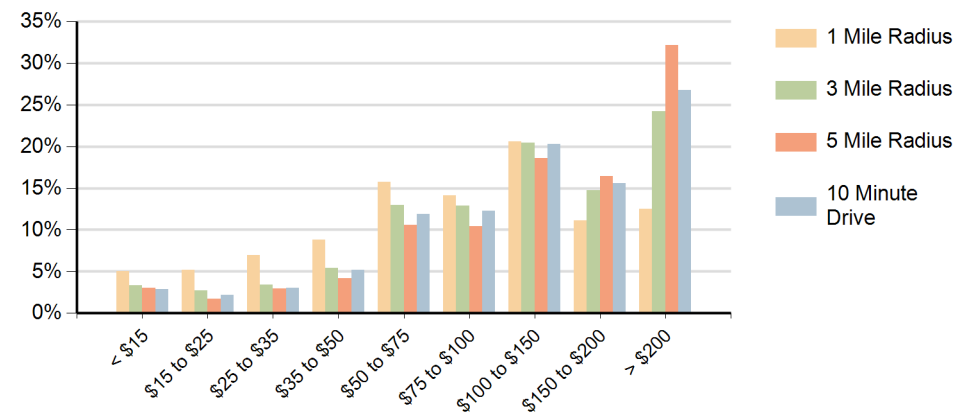


Hispanic Origin (12.2%)

Population by Age Range



Households by Income Range (\$000)



Prestonbrook Crossing Frisco, Texas		1 Mile Radius	3 Mile Radius	5 Mile Radius	10 Minute Drive
Population	Current Estimated Population	16,276	100,128	311,184	145,248
	2020 Census Population	15,925	87,330	279,495	122,372
	2010 Census Population	13,687	59,731	180,012	75,326
	Historical Annual Growth 2010 to 2020	1.5%	3.9%	4.5%	5.0%
	Estimated Annual Growth 2020 to 2024	0.5%	3.3%	2.6%	4.1%
	Projected Annual Growth 2024 to 2029	-0.1%	1.6%	1.1%	1.7%
Households	Current Estimated Households	6,763	39,152	110,430	54,739
	2020 Census Households	6,601	33,288	97,431	45,583
	2010 Census Households	5,550	21,825	63,400	27,953
	Historical Annual Growth 2010 to 2020	1.8%	4.3%	4.4%	5.0%
	Estimated Annual Growth 2020 to 2024	0.6%	3.9%	3.0%	4.4%
	Projected Annual Growth 2024 to 2029	0.1%	2.0%	1.5%	1.9%
Race	Population per Household	2.4	2.6	2.8	2.6
	White	46.6%	45.5%	41.5%	40.1%
	Black or African American	14.3%	10.5%	9.5%	9.9%
	American Indian	0.7%	0.6%	0.5%	0.5%
	Asian	14.9%	27.2%	35.2%	35.2%
	Pacific Islander	0.1%	0.1%	0.1%	0.1%
	2 or More Races	14.1%	11.0%	9.8%	9.9%
	Other Races	9.3%	5.2%	3.4%	4.2%
Hispanic Origin		22.6%	14.5%	11.2%	12.2%