

El Cerrito Plaza
El Cerrito, California

1 Mile Radius

3 Mile Radius

5 Mile Radius

10 Minute Drive

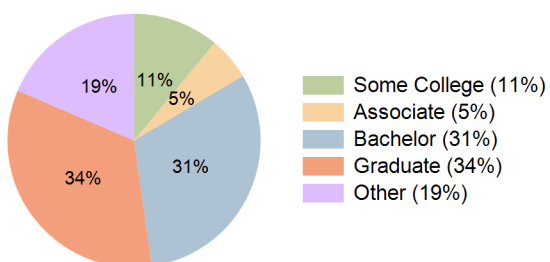
Current Year Demographics

Current Population	28,869	149,395	346,715	115,098
Total Daytime Pop	25,251	166,947	366,549	98,902
Daytime Workers	12,223	95,354	198,423	43,914
Average Household Income	\$185,671	\$172,005	\$159,359	\$173,767
Median Household Income	\$133,641	\$118,500	\$110,259	\$123,389
Total Households	11,660	59,911	130,814	43,710
Median Home Value	\$1,200,951	\$1,326,620	\$1,156,046	\$1,190,781
Bachelors Degree	34.9%	33.2%	30.2%	31.3%
Graduate Degree	37.3%	37.6%	30.3%	33.7%
Consumer Spending Index	155	145	135	146

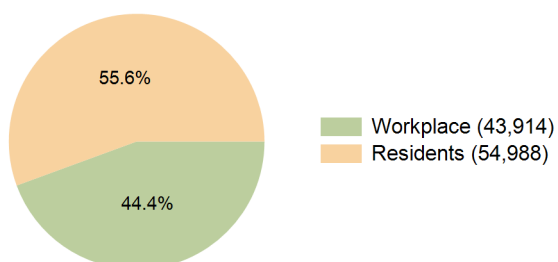
2030 Demographic Projections

Projected Population	29,332	153,412	352,569	115,649
Projected 5 Year Annual Growth Rate (Pop)	0.3%	0.5%	0.3%	0.1%
Projected Households	11,856	61,832	133,470	43,926
Projected 5 Year Annual Growth Rate (HH)	0.3%	0.6%	0.4%	0.1%

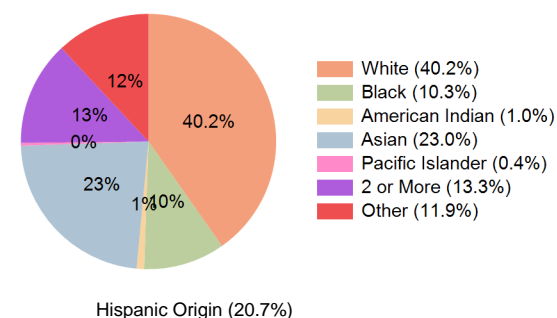
Education (10 Minute Drive)



Daytime Population (10 Minute Drive)

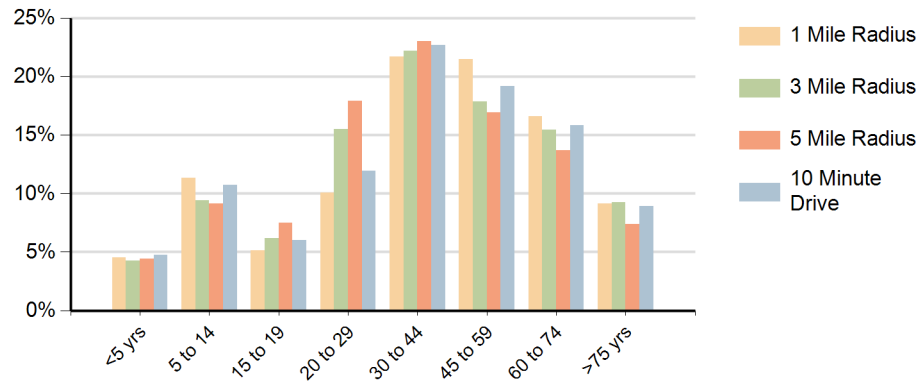


Race (10 Minute Drive)

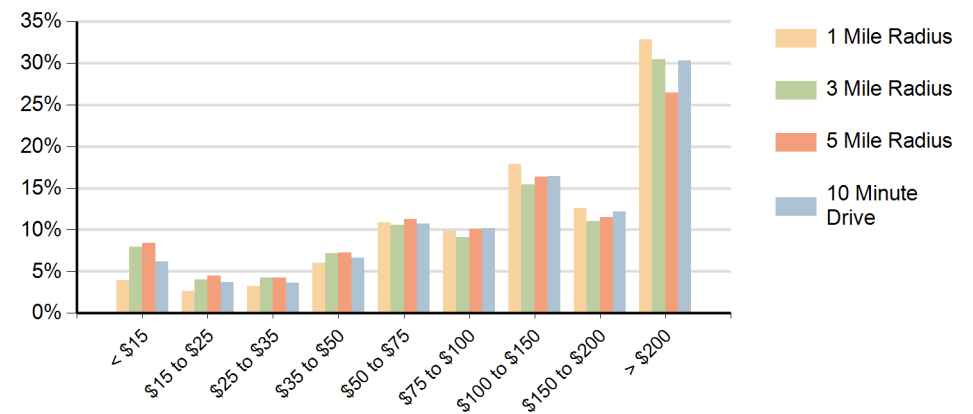


Hispanic Origin (20.7%)

Population by Age Range



Households by Income Range (\$000)



El Cerrito Plaza El Cerrito, California		1 Mile Radius	3 Mile Radius	5 Mile Radius	10 Minute Drive
Population	Current Estimated Population	28,869	149,395	346,715	115,098
	2020 Census Population	29,259	149,951	345,092	115,767
	2010 Census Population	26,969	135,656	310,693	103,414
	Historical Annual Growth 2010 to 2020	0.8%	1.0%	1.1%	1.1%
	Estimated Annual Growth 2020 to 2025	-0.3%	-0.1%	0.1%	-0.1%
	Projected Annual Growth 2025 to 2030	0.3%	0.5%	0.3%	0.1%
Households	Current Estimated Households	11,660	59,911	130,814	43,710
	2020 Census Households	11,829	59,979	129,636	43,843
	2010 Census Households	11,586	58,071	123,109	42,040
	Historical Annual Growth 2010 to 2020	0.2%	0.3%	0.5%	0.4%
	Estimated Annual Growth 2020 to 2025	-0.3%	0.0%	0.2%	-0.1%
	Projected Annual Growth 2025 to 2030	0.3%	0.6%	0.4%	0.1%
Race	Population per Household	2.5	2.4	2.5	2.6
	White	45.1%	45.3%	38.3%	40.2%
	Black or African American	3.6%	9.0%	11.1%	10.3%
	American Indian	0.4%	0.7%	1.1%	1.0%
	Asian	32.2%	24.0%	20.4%	23.0%
	Pacific Islander	0.1%	0.3%	0.3%	0.4%
	2 or More Races	13.3%	12.8%	13.1%	13.3%
	Other Races	5.2%	7.9%	15.7%	11.9%
Hispanic Origin		12.3%	15.5%	25.8%	20.7%