

**Ocala Corners**  
Tallahassee, Florida

**1 Mile Radius**

**3 Mile Radius**

**5 Mile Radius**

**10 Minute Drive**

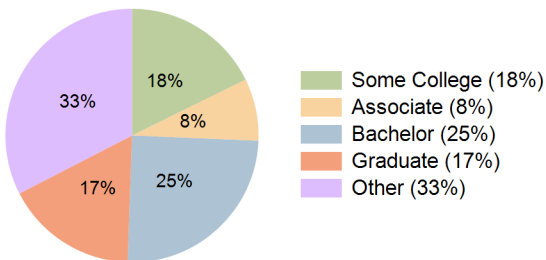
**Current Year Demographics**

|                          |           |           |           |           |
|--------------------------|-----------|-----------|-----------|-----------|
| Current Population       | 25,455    | 99,788    | 158,823   | 86,894    |
| Total Daytime Pop        | 22,789    | 136,319   | 196,391   | 109,462   |
| Daytime Workers          | 10,861    | 86,114    | 119,757   | 65,153    |
| Average Household Income | \$41,677  | \$60,824  | \$76,545  | \$53,079  |
| Median Household Income  | \$31,996  | \$39,088  | \$50,846  | \$35,919  |
| Total Households         | 11,183    | 40,758    | 67,218    | 35,076    |
| Median Home Value        | \$184,375 | \$247,899 | \$288,270 | \$213,713 |
| Bachelors Degree         | 28.8%     | 27.5%     | 27.4%     | 24.9%     |
| Graduate Degree          | 21.6%     | 18.2%     | 21.2%     | 16.9%     |
| Consumer Spending Index  | 37        | 54        | 68        | 47        |

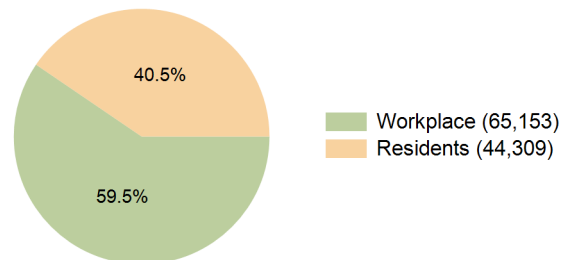
**2030 Demographic Projections**

|   |        |         |         |        |
|---|--------|---------|---------|--------|
| Projected Population                      | 25,328 | 102,328 | 161,704 | 89,391 |
| Projected 5 Year Annual Growth Rate (Pop) | -0.1%  | 0.5%    | 0.4%    | 0.6%   |
| Projected Households                      | 11,250 | 42,447  | 69,293  | 36,654 |
| Projected 5 Year Annual Growth Rate (HH)  | 0.1%   | 0.8%    | 0.6%    | 0.9%   |

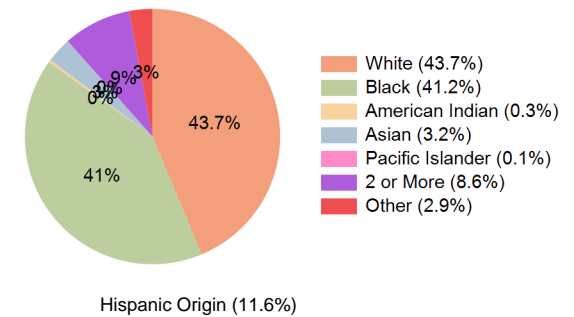
**Education (10 Minute Drive)**



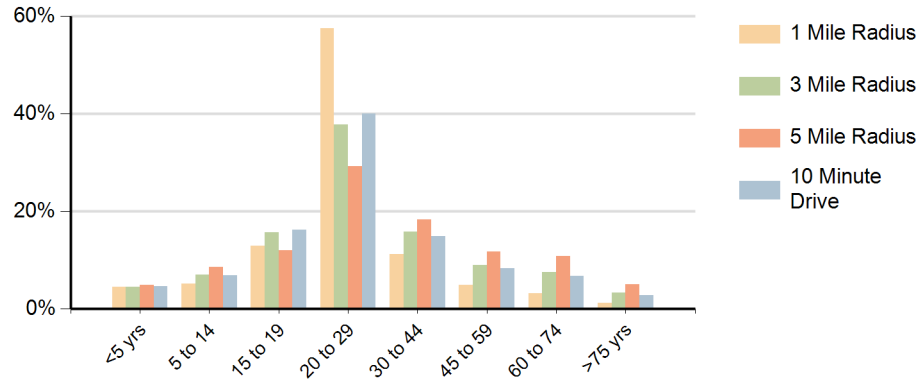
**Daytime Population (10 Minute Drive)**



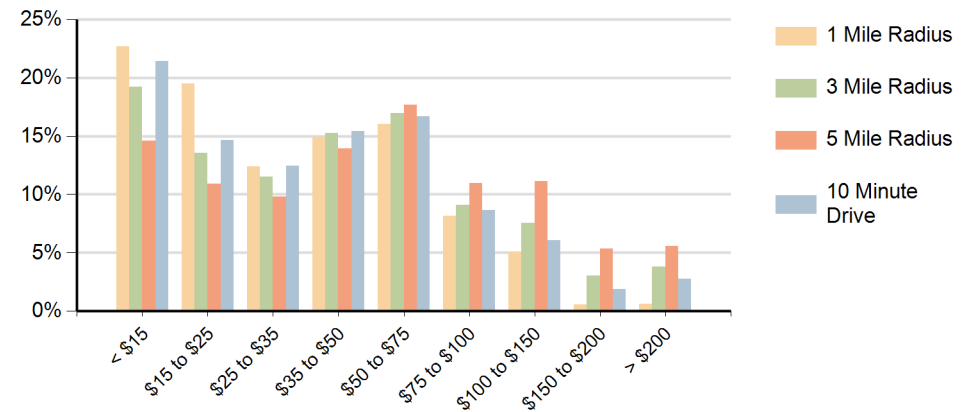
**Race (10 Minute Drive)**



### Population by Age Range



### Households by Income Range (\$000)



| Ocala Corners<br>Tallahassee, Florida |                                       | 1 Mile Radius | 3 Mile Radius | 5 Mile Radius | 10 Minute Drive |
|---------------------------------------|---------------------------------------|---------------|---------------|---------------|-----------------|
| Population                            | Current Estimated Population          | 25,455        | 99,788        | 158,823       | 86,894          |
|                                       | 2020 Census Population                | 25,143        | 97,095        | 155,878       | 84,643          |
|                                       | 2010 Census Population                | 22,687        | 89,967        | 147,501       | 77,698          |
|                                       | Historical Annual Growth 2010 to 2020 | 1.0%          | 0.8%          | 0.6%          | 0.9%            |
|                                       | Estimated Annual Growth 2020 to 2025  | 0.2%          | 0.5%          | 0.4%          | 0.5%            |
|                                       | Projected Annual Growth 2025 to 2030  | -0.1%         | 0.5%          | 0.4%          | 0.6%            |
| Households                            | Current Estimated Households          | 11,183        | 40,758        | 67,218        | 35,076          |
|                                       | 2020 Census Households                | 11,124        | 39,619        | 65,504        | 34,208          |
|                                       | 2010 Census Households                | 9,446         | 35,340        | 60,079        | 30,208          |
|                                       | Historical Annual Growth 2010 to 2020 | 1.7%          | 1.2%          | 0.9%          | 1.3%            |
|                                       | Estimated Annual Growth 2020 to 2025  | 0.1%          | 0.5%          | 0.5%          | 0.5%            |
|                                       | Projected Annual Growth 2025 to 2030  | 0.1%          | 0.8%          | 0.6%          | 0.9%            |
| Race                                  | Population per Household              | 2.1           | 2.1           | 2.1           | 2.1             |
|                                       | White                                 | 46.0%         | 44.0%         | 45.9%         | 43.7%           |
|                                       | Black or African American             | 35.1%         | 41.6%         | 40.2%         | 41.2%           |
|                                       | American Indian                       | 0.3%          | 0.3%          | 0.3%          | 0.3%            |
|                                       | Asian                                 | 5.2%          | 3.1%          | 2.8%          | 3.2%            |
|                                       | Pacific Islander                      | 0.1%          | 0.1%          | 0.1%          | 0.1%            |
|                                       | 2 or More Races                       | 10.2%         | 8.4%          | 8.0%          | 8.6%            |
|                                       | Other Races                           | 3.2%          | 2.7%          | 2.7%          | 2.9%            |
| Hispanic Origin                       |                                       | 14.2%         | 10.8%         | 9.8%          | 11.6%           |