

**Woodmen Plaza**  
Colorado Springs, Colorado

**1 Mile Radius**

**3 Mile Radius**

**5 Mile Radius**

**10 Minute Drive**

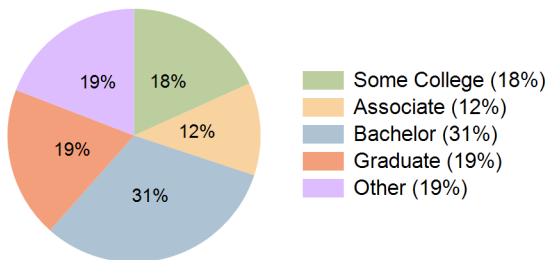
### Current Year Demographics

Current Population	14,674	112,704	238,823	126,765
Total Daytime Pop	11,599	115,945	230,731	129,707
Daytime Workers	5,141	64,295	119,886	71,625
Average Household Income	\$115,794	\$132,345	\$128,079	\$129,230
Median Household Income	\$99,017	\$104,302	\$101,268	\$103,278
Total Households	5,577	42,621	91,764	48,247
Median Home Value	\$468,001	\$496,928	\$508,448	\$499,462
Bachelors Degree	32.1%	31.7%	30.8%	31.5%
Graduate Degree	15.8%	20.4%	18.7%	19.3%
Consumer Spending Index	102	116	113	114

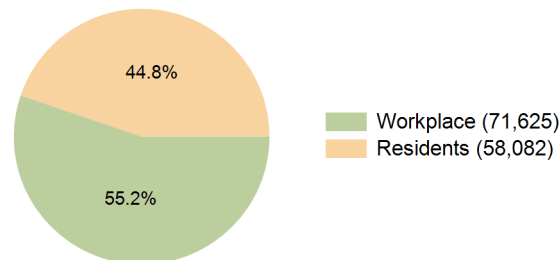
### 2029 Demographic Projections

Projected Population	14,908	115,876	259,162	136,412
Projected 5 Year Annual Growth Rate (Pop)	0.3%	0.6%	1.7%	1.5%
Projected Households	5,716	44,382	99,953	52,331
Projected 5 Year Annual Growth Rate (HH)	0.5%	0.8%	1.7%	1.6%

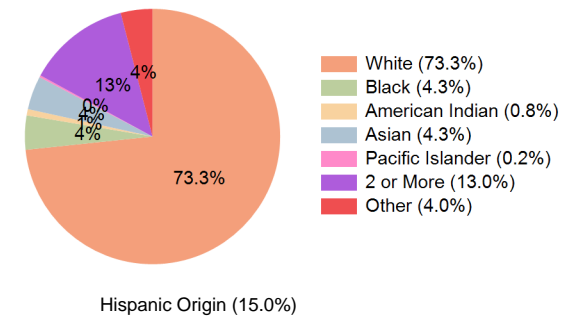
**Education (10 Minute Drive)**



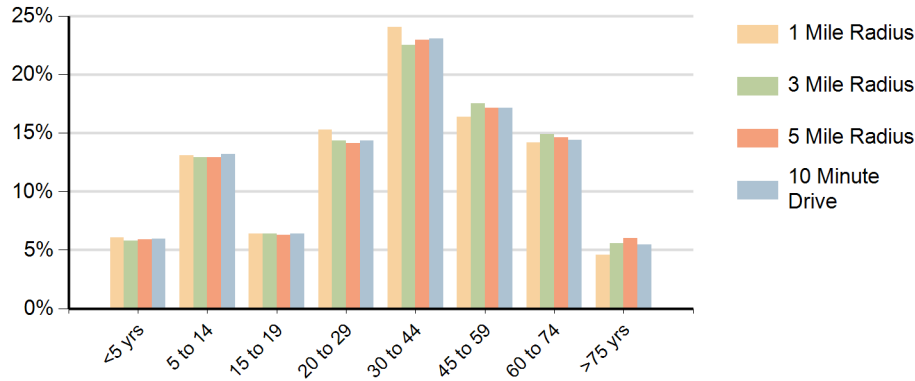
**Daytime Population (10 Minute Drive)**



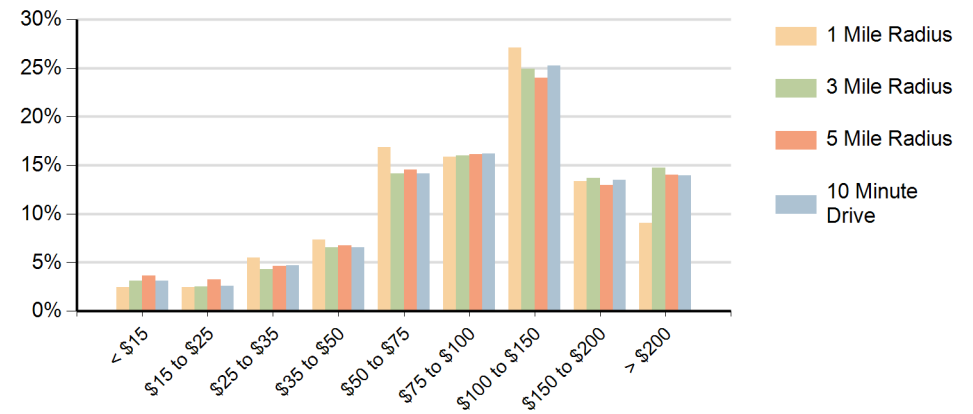
**Race (10 Minute Drive)**



## Population by Age Range



## Households by Income Range (\$000)



Woodmen Plaza Colorado Springs, Colorado		1 Mile Radius	3 Mile Radius	5 Mile Radius	10 Minute Drive
Population	Current Estimated Population	14,674	112,704	238,823	126,765
	2020 Census Population	14,746	109,702	224,833	120,634
	2010 Census Population	13,992	96,748	188,107	102,569
	Historical Annual Growth 2010 to 2020	0.5%	1.3%	1.8%	1.6%
	Estimated Annual Growth 2020 to 2024	-0.1%	0.6%	1.4%	1.2%
	Projected Annual Growth 2024 to 2029	0.3%	0.6%	1.7%	1.5%
Households	Current Estimated Households	5,577	42,621	91,764	48,247
	2020 Census Households	5,554	41,090	85,831	45,479
	2010 Census Households	5,232	35,723	71,598	38,361
	Historical Annual Growth 2010 to 2020	0.6%	1.4%	1.8%	1.7%
	Estimated Annual Growth 2020 to 2024	0.1%	0.9%	1.6%	1.4%
	Projected Annual Growth 2024 to 2029	0.5%	0.8%	1.7%	1.6%
Population per Household		2.6	2.6	2.6	2.6
Race	White	74.9%	73.9%	72.5%	73.3%
	Black or African American	3.8%	4.1%	4.6%	4.3%
	American Indian	0.9%	0.8%	0.8%	0.8%
	Asian	3.6%	4.4%	4.3%	4.3%
	Pacific Islander	0.2%	0.2%	0.3%	0.2%
	2 or More Races	12.7%	12.8%	13.2%	13.0%
	Other Races	3.9%	3.9%	4.3%	4.0%
	Hispanic Origin	14.8%	14.5%	15.6%	15.0%