

Briarcliff La Vista  
Tucker, Georgia

1 Mile Radius

3 Mile Radius

5 Mile Radius

10 Minute Drive

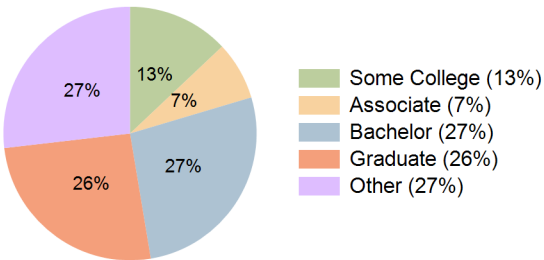
Current Year Demographics

Current Population	8,230	95,584	304,616	123,211
Total Daytime Pop	14,786	86,523	277,679	116,396
Daytime Workers	11,269	42,059	139,899	59,127
Average Household Income	\$149,872	\$132,236	\$118,399	\$125,799
Median Household Income	\$103,865	\$93,570	\$76,886	\$85,440
Total Households	3,859	37,919	122,329	49,022
Median Home Value	\$401,081	\$390,269	\$390,592	\$385,669
Bachelors Degree	31.4%	27.6%	28.3%	27.0%
Graduate Degree	36.8%	27.1%	23.2%	25.8%
Consumer Spending Index	132	117	106	112

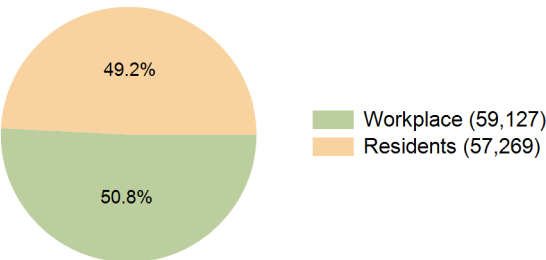
2029 Demographic Projections

Projected Population	8,127	94,343	309,111	122,755
Projected 5 Year Annual Growth Rate (Pop)	-0.3%	-0.3%	0.3%	-0.1%
Projected Households	3,830	37,619	125,040	49,039
Projected 5 Year Annual Growth Rate (HH)	-0.2%	-0.2%	0.4%	0.0%

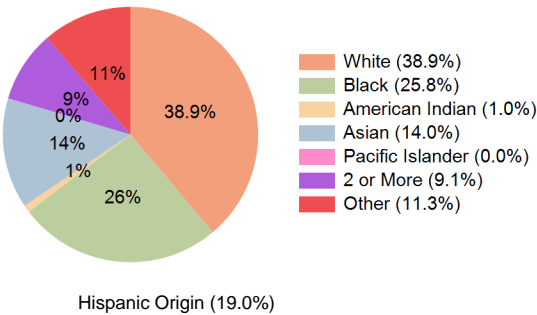
Education (10 Minute Drive)



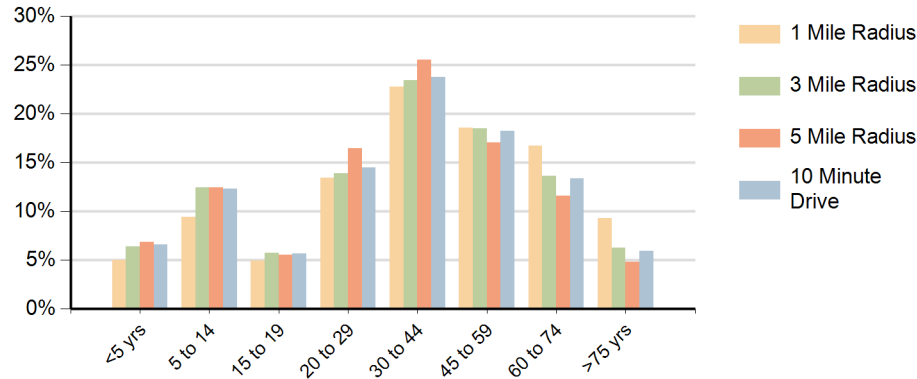
Daytime Population (10 Minute Drive)



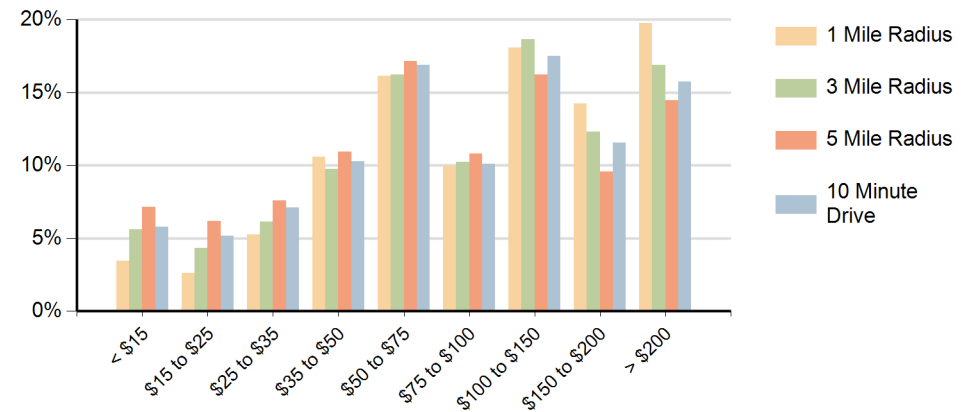
Race (10 Minute Drive)



### Population by Age Range



### Households by Income Range (\$000)



Briarcliff La Vista Tucker, Georgia		1 Mile Radius	3 Mile Radius	5 Mile Radius	10 Minute Drive
Population	Current Estimated Population	8,230	95,584	304,616	123,211
	2020 Census Population	7,942	95,814	300,322	122,634
	2010 Census Population	6,448	86,792	273,663	110,816
	Historical Annual Growth 2010 to 2020	2.1%	1.0%	0.9%	1.0%
	Estimated Annual Growth 2020 to 2024	0.8%	-0.1%	0.3%	0.1%
	Projected Annual Growth 2024 to 2029	-0.3%	-0.3%	0.3%	-0.1%
Households	Current Estimated Households	3,859	37,919	122,329	49,022
	2020 Census Households	3,722	37,852	119,767	48,296
	2010 Census Households	3,006	34,679	106,889	43,508
	Historical Annual Growth 2010 to 2020	2.2%	0.9%	1.1%	1.1%
	Estimated Annual Growth 2020 to 2024	0.9%	0.0%	0.5%	0.4%
	Projected Annual Growth 2024 to 2029	-0.2%	-0.2%	0.4%	0.0%
Race	Population per Household	2.1	2.5	2.5	2.5
	White	49.6%	41.7%	34.6%	38.9%
	Black or African American	27.1%	25.9%	28.5%	25.8%
	American Indian	0.3%	0.7%	1.2%	1.0%
	Asian	10.5%	11.0%	11.5%	14.0%
	Pacific Islander	0.0%	0.0%	0.0%	0.0%
	2 or More Races	9.0%	9.1%	9.5%	9.1%
	Other Races	3.5%	11.6%	14.7%	11.3%
Hispanic Origin		9.5%	19.1%	24.1%	19.0%