

Briarcliff Village Atlanta, Georgia	1 Mile Radius	3 Mile Radius	5 Mile Radius	10 Minute Drive
--	---------------	---------------	---------------	-----------------

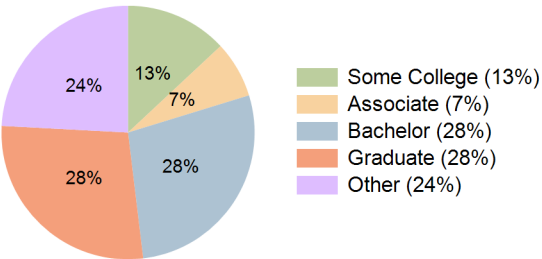
Current Year Demographics

Current Population	7,328	97,513	306,550	93,330
Total Daytime Pop	13,353	87,605	279,222	86,634
Daytime Workers	10,281	42,528	141,085	43,112
Average Household Income	\$155,362	\$133,001	\$119,230	\$132,143
Median Household Income	\$103,622	\$94,364	\$77,573	\$90,750
Total Households	3,529	38,689	123,650	37,177
Median Home Value	\$421,183	\$391,864	\$392,544	\$397,131
Bachelors Degree	29.8%	27.7%	28.8%	27.8%
Graduate Degree	39.0%	27.2%	23.6%	27.8%
Consumer Spending Index	137	117	106	117

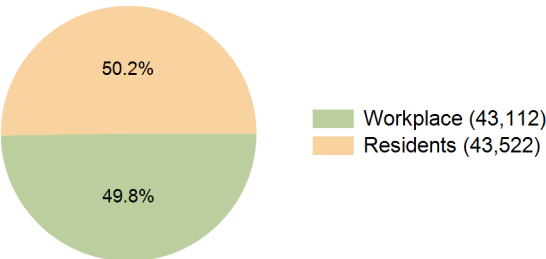
2029 Demographic Projections

Projected Population	7,227	96,237	310,984	92,200
Projected 5 Year Annual Growth Rate (Pop)	-0.3%	-0.3%	0.3%	-0.2%
Projected Households	3,501	38,381	126,335	36,911
Projected 5 Year Annual Growth Rate (HH)	-0.2%	-0.2%	0.4%	-0.1%

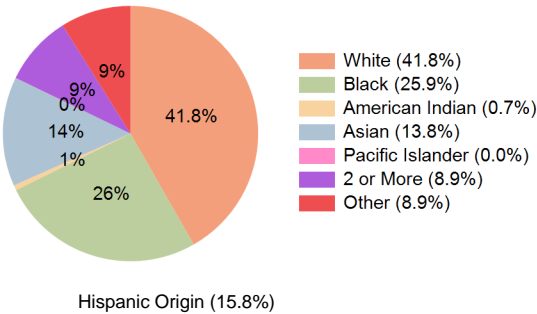
Education (10 Minute Drive)



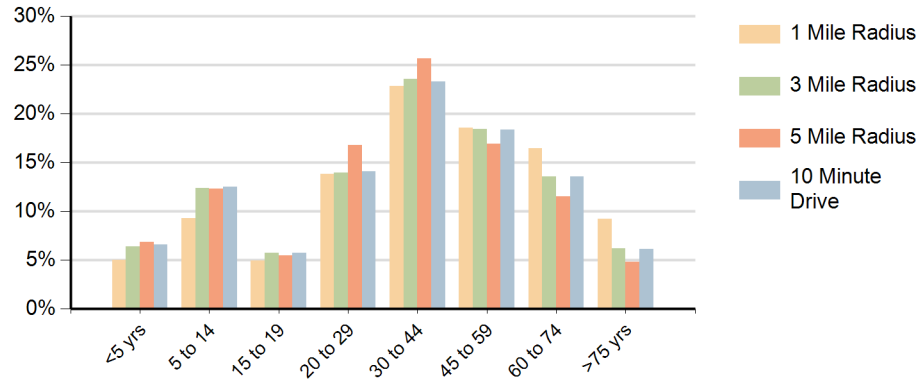
Daytime Population (10 Minute Drive)



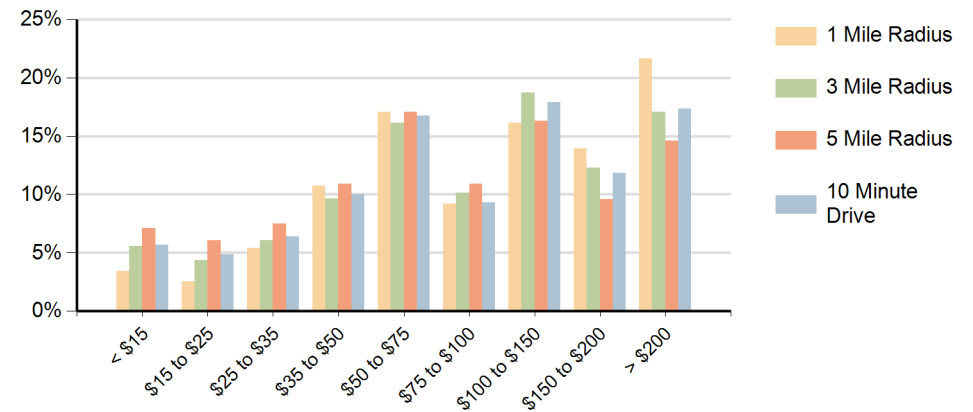
Race (10 Minute Drive)



### Population by Age Range



### Households by Income Range (\$000)



Briarcliff Village Atlanta, Georgia		1 Mile Radius	3 Mile Radius	5 Mile Radius	10 Minute Drive
Population	Current Estimated Population	7,328	97,513	306,550	93,330
	2020 Census Population	7,109	97,783	301,989	93,686
	2010 Census Population	5,782	88,685	274,657	85,066
	Historical Annual Growth 2010 to 2020	2.1%	1.0%	1.0%	1.0%
	Estimated Annual Growth 2020 to 2024	0.7%	-0.1%	0.4%	-0.1%
	Projected Annual Growth 2024 to 2029	-0.3%	-0.3%	0.3%	-0.2%
Households	Current Estimated Households	3,529	38,689	123,650	37,177
	2020 Census Households	3,401	38,629	121,086	37,101
	2010 Census Households	2,754	35,410	107,991	33,936
	Historical Annual Growth 2010 to 2020	2.1%	0.9%	1.2%	0.9%
	Estimated Annual Growth 2020 to 2024	0.9%	0.0%	0.5%	0.1%
	Projected Annual Growth 2024 to 2029	-0.2%	-0.2%	0.4%	-0.1%
Race	Population per Household	2.0	2.5	2.5	2.5
	White	50.2%	41.7%	35.1%	41.8%
	Black or African American	27.6%	25.4%	28.3%	25.9%
	American Indian	0.2%	0.7%	1.2%	0.7%
	Asian	10.0%	10.9%	11.5%	13.8%
	Pacific Islander	0.0%	0.0%	0.0%	0.0%
	2 or More Races	8.8%	9.2%	9.5%	8.9%
	Other Races	3.1%	12.0%	14.4%	8.9%
Hispanic Origin		8.9%	19.7%	23.8%	15.8%