

Cornerstone Square
Sandy Springs, Georgia

1 Mile Radius

3 Mile Radius

5 Mile Radius

10 Minute Drive

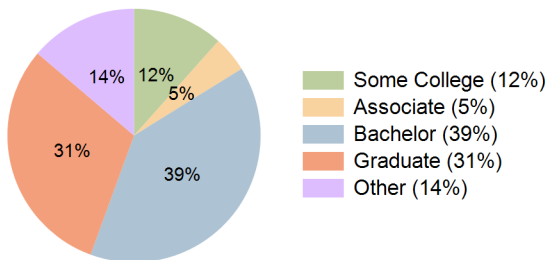
Current Year Demographics

Current Population	12,036	97,593	231,678	81,351
Total Daytime Pop	18,372	190,202	336,722	161,190
Daytime Workers	12,772	149,694	237,377	128,493
Average Household Income	\$168,991	\$172,281	\$185,509	\$160,883
Median Household Income	\$110,434	\$112,213	\$120,975	\$104,854
Total Households	5,715	44,163	101,885	37,416
Median Home Value	\$606,660	\$628,440	\$636,176	\$612,523
Bachelors Degree	36.8%	40.5%	42.3%	39.4%
Graduate Degree	34.1%	32.9%	32.3%	30.6%
Consumer Spending Index	147	150	161	141

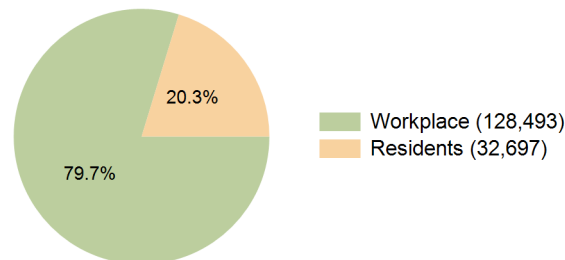
2029 Demographic Projections

Projected Population	12,100	99,224	233,853	81,991
Projected 5 Year Annual Growth Rate (Pop)	0.1%	0.3%	0.2%	0.2%
Projected Households	5,879	45,656	104,322	38,356
Projected 5 Year Annual Growth Rate (HH)	0.6%	0.7%	0.5%	0.5%

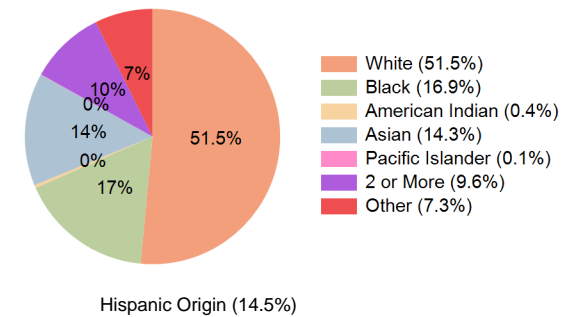
Education (10 Minute Drive)



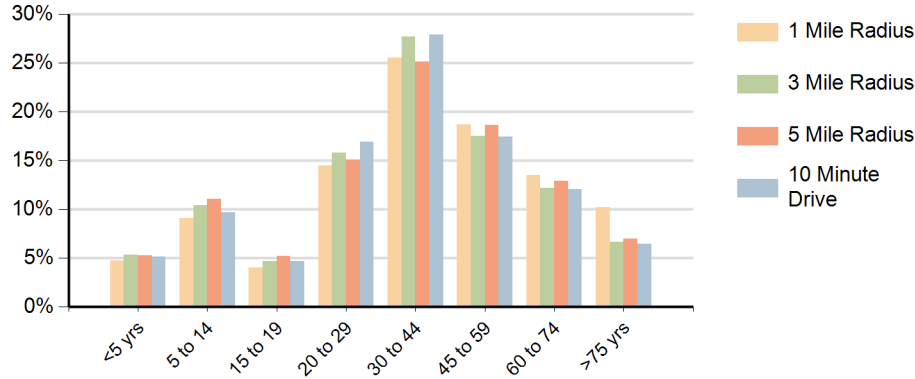
Daytime Population (10 Minute Drive)



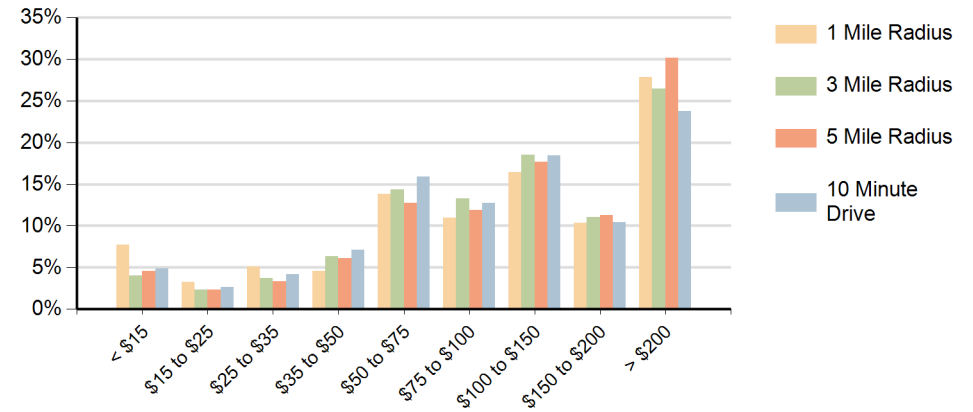
Race (10 Minute Drive)



Population by Age Range



Households by Income Range (\$000)



Cornerstone Square Sandy Springs, Georgia		1 Mile Radius	3 Mile Radius	5 Mile Radius	10 Minute Drive
Population	Current Estimated Population	12,036	97,593	231,678	81,351
	2020 Census Population	10,574	95,265	228,524	79,355
	2010 Census Population	7,503	78,642	197,050	64,925
	Historical Annual Growth 2010 to 2020	3.5%	1.9%	1.5%	2.0%
	Estimated Annual Growth 2020 to 2024	3.1%	0.6%	0.3%	0.6%
	Projected Annual Growth 2024 to 2029	0.1%	0.3%	0.2%	0.2%
Households	Current Estimated Households	5,715	44,163	101,885	37,416
	2020 Census Households	5,111	43,164	100,135	36,537
	2010 Census Households	3,745	36,195	87,197	29,968
	Historical Annual Growth 2010 to 2020	3.2%	1.8%	1.4%	2.0%
	Estimated Annual Growth 2020 to 2024	2.7%	0.5%	0.4%	0.6%
	Projected Annual Growth 2024 to 2029	0.6%	0.7%	0.5%	0.5%
Population per Household		2.1	2.2	2.3	2.2
Race	White	61.5%	53.2%	59.8%	51.5%
	Black or African American	15.2%	14.5%	13.6%	16.9%
	American Indian	0.4%	0.4%	0.3%	0.4%
	Asian	9.9%	17.0%	13.1%	14.3%
	Pacific Islander	0.1%	0.1%	0.0%	0.1%
	2 or More Races	8.9%	8.9%	8.6%	9.6%
	Other Races	4.0%	6.0%	4.5%	7.3%
	Hispanic Origin	9.1%	12.4%	10.1%	14.5%