

**Brighten Park**  
Atlanta, Georgia

**1 Mile Radius**

**3 Mile Radius**

**5 Mile Radius**

**10 Minute Drive**

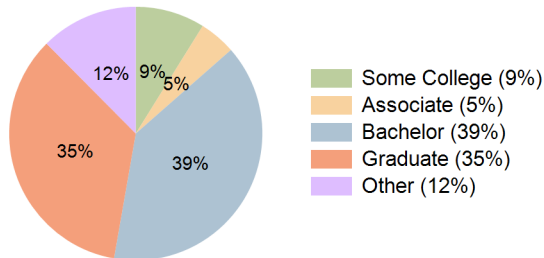
### Current Year Demographics

Current Population	17,710	152,200	392,940	132,415
Total Daytime Pop	17,793	275,440	584,501	214,848
Daytime Workers	11,879	217,701	431,840	166,100
Average Household Income	\$132,272	\$161,441	\$166,575	\$150,298
Median Household Income	\$89,009	\$110,043	\$113,626	\$104,072
Total Households	8,643	74,987	194,370	66,382
Median Home Value	\$533,303	\$626,422	\$631,198	\$590,493
Bachelors Degree	37.9%	40.7%	39.6%	39.2%
Graduate Degree	36.5%	35.3%	36.2%	34.8%
Consumer Spending Index	117	142	146	132

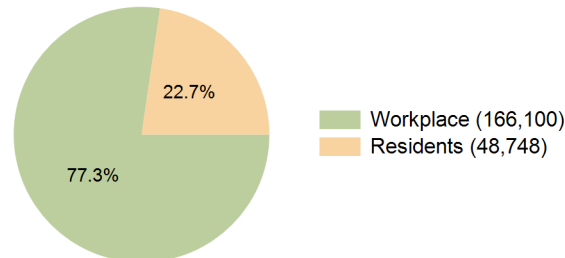
### 2029 Demographic Projections

Projected Population	19,028	154,844	405,660	136,037
Projected 5 Year Annual Growth Rate (Pop)	1.5%	0.4%	0.6%	0.5%
Projected Households	9,354	77,448	204,994	69,391
Projected 5 Year Annual Growth Rate (HH)	1.6%	0.7%	1.1%	0.9%

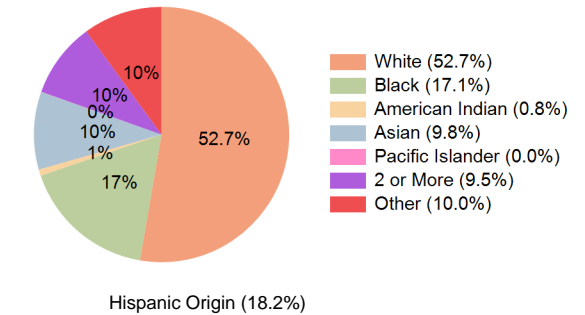
**Education (10 Minute Drive)**



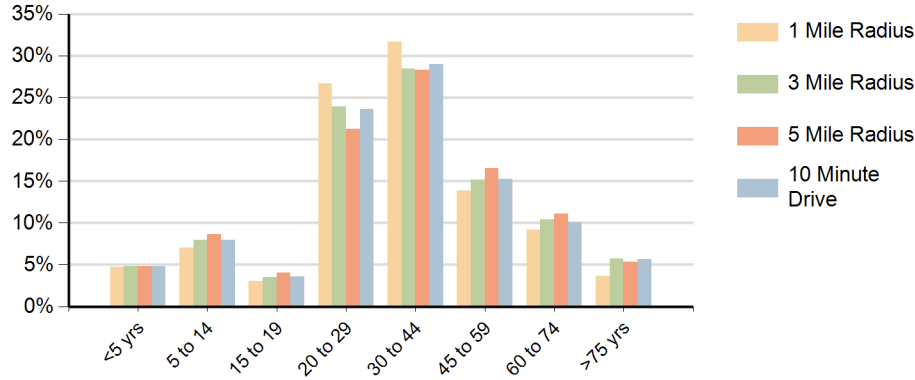
**Daytime Population (10 Minute Drive)**



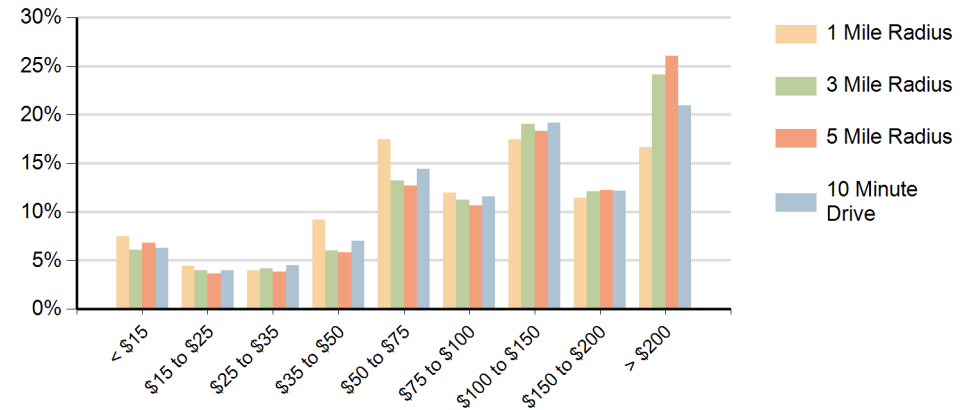
**Race (10 Minute Drive)**



## Population by Age Range



## Households by Income Range (\$000)



Brighten Park Atlanta, Georgia		1 Mile Radius	3 Mile Radius	5 Mile Radius	10 Minute Drive
Population	Current Estimated Population	17,710	152,200	392,940	132,415
	2020 Census Population	16,815	148,412	379,684	129,895
	2010 Census Population	16,002	127,411	317,081	112,401
	Historical Annual Growth 2010 to 2020	0.5%	1.5%	1.8%	1.5%
	Estimated Annual Growth 2020 to 2024	1.2%	0.6%	0.8%	0.5%
	Projected Annual Growth 2024 to 2029	1.5%	0.4%	0.6%	0.5%
Households	Current Estimated Households	8,643	74,987	194,370	66,382
	2020 Census Households	8,477	72,429	185,768	64,553
	2010 Census Households	7,827	60,258	151,985	53,769
	Historical Annual Growth 2010 to 2020	0.8%	1.9%	2.0%	1.8%
	Estimated Annual Growth 2020 to 2024	0.5%	0.8%	1.1%	0.7%
	Projected Annual Growth 2024 to 2029	1.6%	0.7%	1.1%	0.9%
Population per Household		2.0	2.0	2.0	1.9
Race	White	49.6%	56.9%	59.4%	52.7%
	Black or African American	18.1%	16.1%	16.3%	17.1%
	American Indian	0.9%	0.7%	0.5%	0.8%
	Asian	11.0%	9.3%	9.0%	9.8%
	Pacific Islander	0.0%	0.0%	0.0%	0.0%
	2 or More Races	9.9%	9.0%	8.7%	9.5%
	Other Races	10.5%	7.9%	6.2%	10.0%
	Hispanic Origin	19.1%	15.2%	12.5%	18.2%