

Powers Ferry Square
Atlanta, Georgia

1 Mile Radius

3 Mile Radius

5 Mile Radius

10 Minute Drive

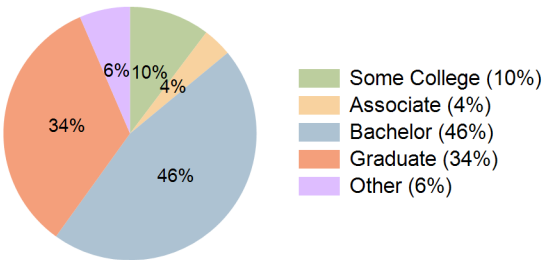
Current Year Demographics

Current Population	14,855	114,829	306,190	75,593
Total Daytime Pop	28,686	165,236	518,178	134,439
Daytime Workers	23,067	120,471	400,067	103,471
Average Household Income	\$211,765	\$226,438	\$197,635	\$229,757
Median Household Income	\$121,835	\$127,673	\$118,986	\$126,231
Total Households	8,566	59,928	154,462	40,541
Median Home Value	\$825,796	\$842,990	\$736,052	\$869,665
Bachelors Degree	50.7%	45.9%	43.4%	45.9%
Graduate Degree	32.8%	34.8%	34.4%	33.6%
Consumer Spending Index	180	192	168	195

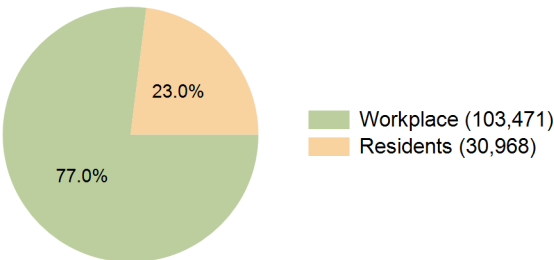
2030 Demographic Projections

Projected Population	14,980	115,695	315,090	76,522
Projected 5 Year Annual Growth Rate (Pop)	0.2%	0.2%	0.6%	0.2%
Projected Households	8,813	61,231	161,345	41,824
Projected 5 Year Annual Growth Rate (HH)	0.6%	0.4%	0.9%	0.6%

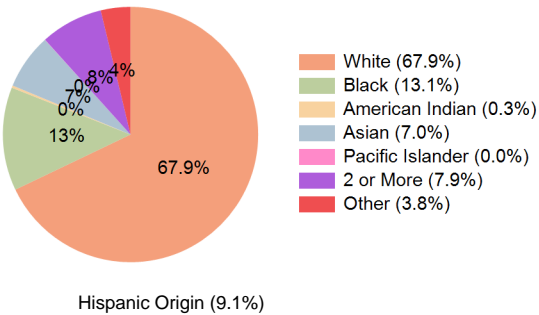
Education (10 Minute Drive)



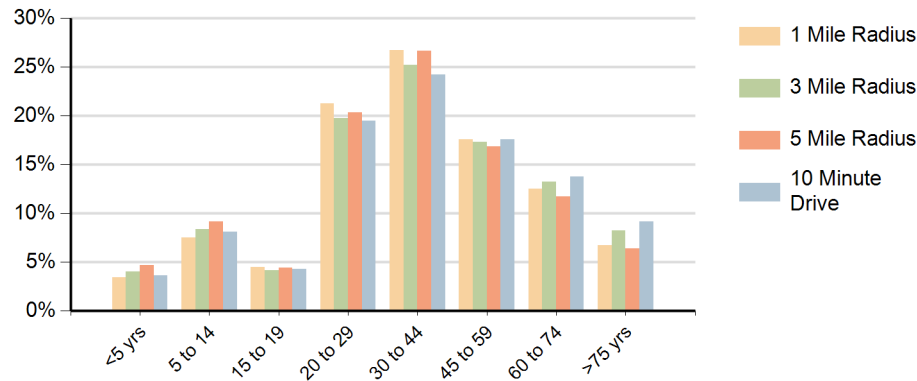
Daytime Population (10 Minute Drive)



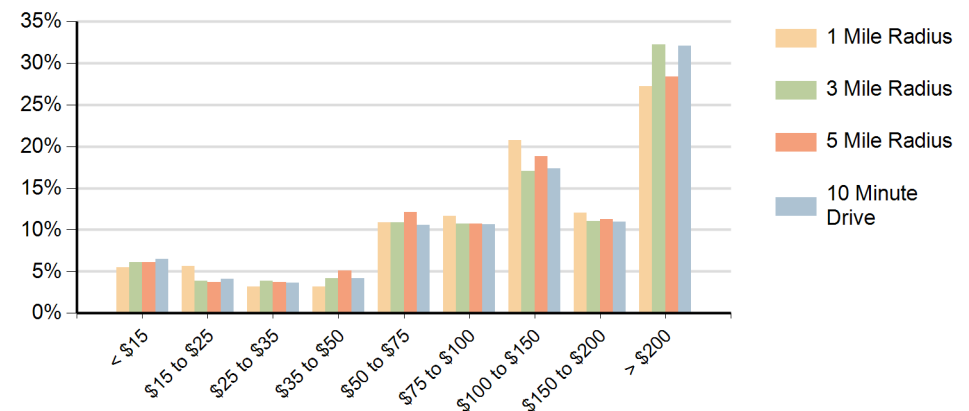
Race (10 Minute Drive)



Population by Age Range



Households by Income Range (\$000)



Powers Ferry Square Atlanta, Georgia		1 Mile Radius	3 Mile Radius	5 Mile Radius	10 Minute Drive
Population	Current Estimated Population	14,855	114,829	306,190	75,593
	2020 Census Population	13,230	109,966	292,225	71,611
	2010 Census Population	9,845	89,621	241,773	58,936
	Historical Annual Growth 2010 to 2020	3.0%	2.1%	1.9%	2.0%
	Estimated Annual Growth 2020 to 2025	2.2%	0.8%	0.9%	1.0%
	Projected Annual Growth 2025 to 2030	0.2%	0.2%	0.6%	0.2%
Households	Current Estimated Households	8,566	59,928	154,462	40,541
	2020 Census Households	7,285	56,305	144,705	37,238
	2010 Census Households	5,327	44,595	116,118	29,944
	Historical Annual Growth 2010 to 2020	3.2%	2.4%	2.2%	2.2%
	Estimated Annual Growth 2020 to 2025	3.1%	1.2%	1.3%	1.6%
	Projected Annual Growth 2025 to 2030	0.6%	0.4%	0.9%	0.6%
Race	Population per Household	1.7	1.9	2.0	1.8
	White	71.3%	67.0%	60.2%	67.9%
	Black or African American	11.1%	13.5%	15.3%	13.1%
	American Indian	0.2%	0.3%	0.5%	0.3%
	Asian	7.5%	7.5%	8.3%	7.0%
	Pacific Islander	0.0%	0.0%	0.0%	0.0%
	2 or More Races	7.7%	7.8%	8.7%	7.9%
	Other Races	2.3%	3.9%	6.9%	3.8%
Hispanic Origin		6.6%	9.1%	13.6%	9.1%