

Peartree Village
Brentwood, Tennessee

1 Mile Radius

3 Mile Radius

5 Mile Radius

10 Minute Drive

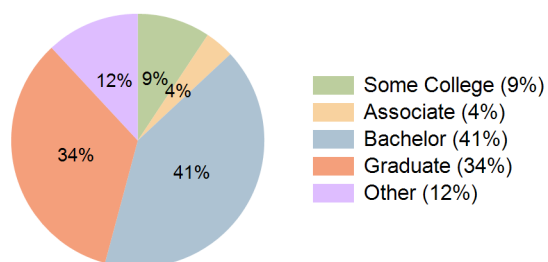
Current Year Demographics

Current Population	3,849	35,296	117,224	32,386
Total Daytime Pop	18,177	59,011	138,298	61,353
Daytime Workers	16,601	42,326	83,549	46,409
Average Household Income	\$166,300	\$216,394	\$181,885	\$204,008
Median Household Income	\$103,731	\$155,066	\$126,008	\$144,457
Total Households	1,959	13,979	45,793	13,078
Median Home Value	\$935,577	\$798,086	\$718,771	\$734,219
Bachelors Degree	38.0%	41.0%	37.8%	41.1%
Graduate Degree	31.0%	34.2%	30.0%	33.9%
Consumer Spending Index	141	181	155	171

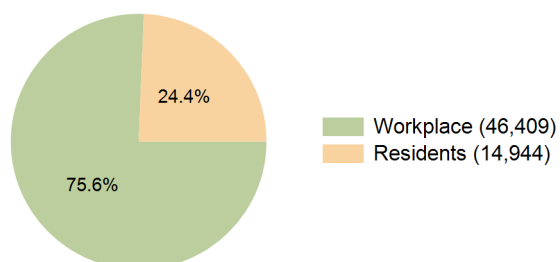
2030 Demographic Projections

Projected Population	4,295	36,314	121,009	33,273
Projected 5 Year Annual Growth Rate (Pop)	2.2%	0.6%	0.6%	0.5%
Projected Households	2,217	14,382	47,032	13,445
Projected 5 Year Annual Growth Rate (HH)	2.5%	0.6%	0.5%	0.6%

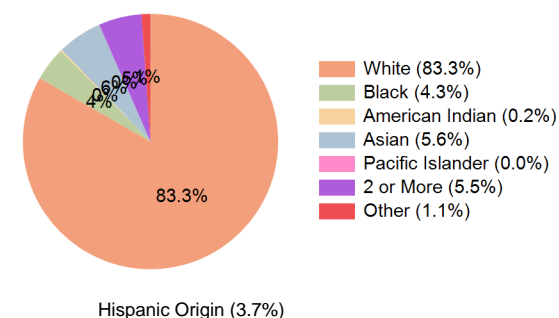
Education (10 Minute Drive)



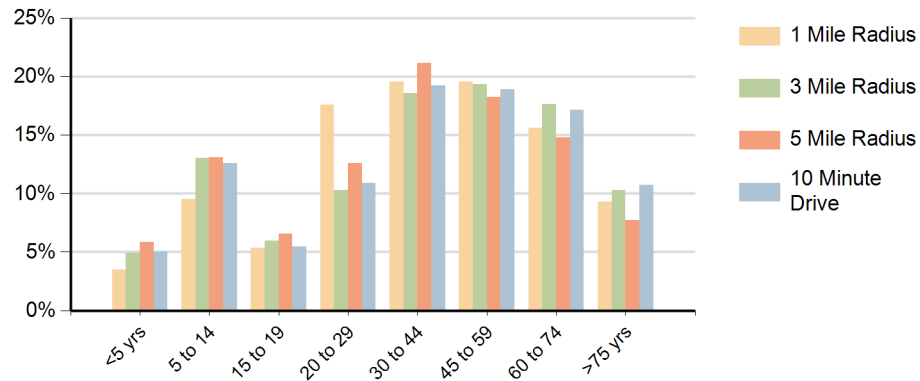
Daytime Population (10 Minute Drive)



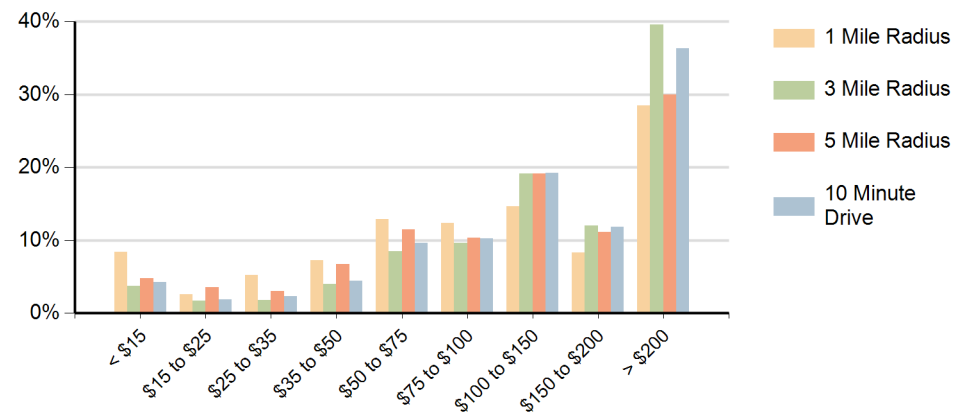
Race (10 Minute Drive)



Population by Age Range



Households by Income Range (\$000)



Peartree Village Brentwood, Tennessee		1 Mile Radius	3 Mile Radius	5 Mile Radius	10 Minute Drive
Population	Current Estimated Population	3,849	35,296	117,224	32,386
	2020 Census Population	3,865	35,361	116,079	32,544
	2010 Census Population	3,106	30,672	101,457	28,008
	Historical Annual Growth 2010 to 2020	2.2%	1.4%	1.4%	1.5%
	Estimated Annual Growth 2020 to 2025	-0.1%	0.0%	0.2%	-0.1%
	Projected Annual Growth 2025 to 2030	2.2%	0.6%	0.6%	0.5%
Households	Current Estimated Households	1,959	13,979	45,793	13,078
	2020 Census Households	1,943	14,007	45,450	13,122
	2010 Census Households	1,623	12,320	41,101	11,334
	Historical Annual Growth 2010 to 2020	1.8%	1.3%	1.0%	1.5%
	Estimated Annual Growth 2020 to 2025	0.2%	0.0%	0.1%	-0.1%
	Projected Annual Growth 2025 to 2030	2.5%	0.6%	0.5%	0.6%
Race	Population per Household	2.0	2.5	2.5	2.5
	White	85.5%	82.8%	72.5%	83.3%
	Black or African American	2.9%	4.0%	7.1%	4.3%
	American Indian	0.1%	0.2%	0.4%	0.2%
	Asian	4.9%	6.4%	6.8%	5.6%
	Pacific Islander	0.0%	0.0%	0.0%	0.0%
	2 or More Races	5.3%	5.3%	6.9%	5.5%
	Other Races	1.3%	1.4%	6.2%	1.1%
Hispanic Origin		3.8%	4.0%	10.9%	3.7%