

**Harpeth Village Fieldstone**  
Franklin, Tennessee

**1 Mile Radius**

**3 Mile Radius**

**5 Mile Radius**

**10 Minute Drive**

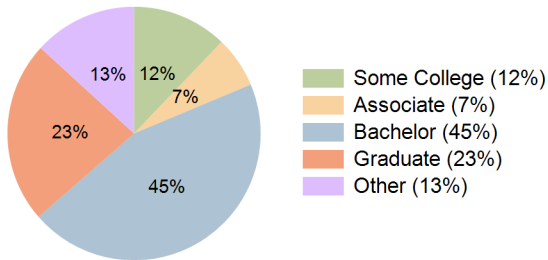
**Current Year Demographics**

Current Population	7,209	27,421	84,512	26,494
Total Daytime Pop	4,805	25,552	132,262	29,217
Daytime Workers	1,402	12,893	92,800	16,558
Average Household Income	\$156,084	\$162,389	\$165,783	\$172,017
Median Household Income	\$116,068	\$112,262	\$115,124	\$118,367
Total Households	2,557	10,612	33,852	10,367
Median Home Value	\$644,552	\$718,306	\$745,392	\$764,662
Bachelors Degree	46.9%	44.6%	42.2%	44.9%
Graduate Degree	26.0%	21.7%	24.1%	23.2%
Consumer Spending Index	135	141	144	148

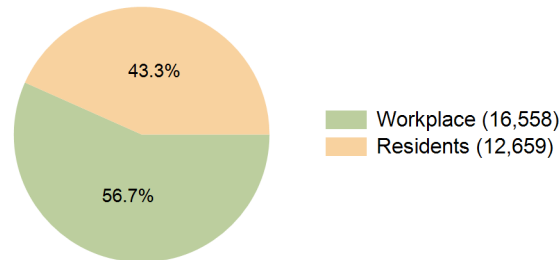
**2029 Demographic Projections**

Projected Population	7,511	28,807	91,958	28,286
Projected 5 Year Annual Growth Rate (Pop)	0.8%	1.0%	1.7%	1.3%
Projected Households	2,678	11,219	37,161	11,217
Projected 5 Year Annual Growth Rate (HH)	0.9%	1.1%	1.9%	1.6%

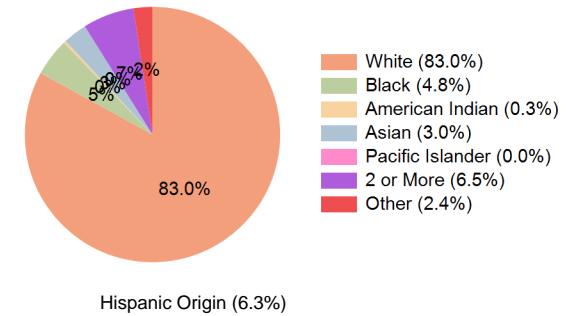
**Education (10 Minute Drive)**



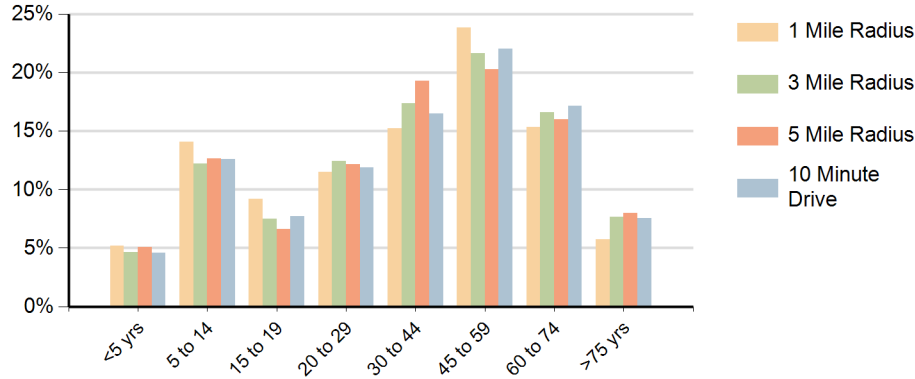
**Daytime Population (10 Minute Drive)**



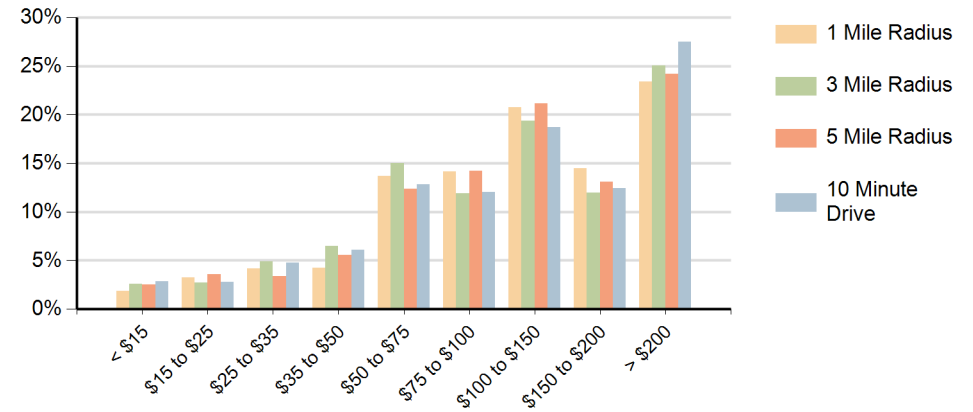
**Race (10 Minute Drive)**



## Population by Age Range



## Households by Income Range (\$000)



Harpeth Village Fieldstone Franklin, Tennessee		1 Mile Radius	3 Mile Radius	5 Mile Radius	10 Minute Drive
Population	Current Estimated Population	7,209	27,421	84,512	26,494
	2020 Census Population	7,025	26,232	79,459	25,168
	2010 Census Population	6,729	24,019	67,872	22,841
	Historical Annual Growth 2010 to 2020	0.4%	0.9%	1.6%	1.0%
	Estimated Annual Growth 2020 to 2024	0.6%	1.1%	1.5%	1.2%
	Projected Annual Growth 2024 to 2029	0.8%	1.0%	1.7%	1.3%
Households	Current Estimated Households	2,557	10,612	33,852	10,367
	2020 Census Households	2,473	9,995	31,418	9,685
	2010 Census Households	2,363	8,777	26,149	8,462
	Historical Annual Growth 2010 to 2020	0.5%	1.3%	1.9%	1.4%
	Estimated Annual Growth 2020 to 2024	0.8%	1.4%	1.8%	1.6%
	Projected Annual Growth 2024 to 2029	0.9%	1.1%	1.9%	1.6%
Population per Household		2.8	2.6	2.5	2.5
Race	White	86.8%	80.7%	77.9%	83.0%
	Black or African American	1.6%	4.6%	4.9%	4.8%
	American Indian	0.4%	0.3%	0.3%	0.3%
	Asian	3.1%	3.4%	6.2%	3.0%
	Pacific Islander	0.0%	0.0%	0.1%	0.0%
	2 or More Races	7.1%	6.8%	6.8%	6.5%
	Other Races	1.1%	4.2%	3.9%	2.4%
	Hispanic Origin	4.7%	8.8%	8.4%	6.3%