

**Westchester Commons**  
Westchester, Illinois

**1 Mile Radius**

**3 Mile Radius**

**5 Mile Radius**

**10 Minute Drive**

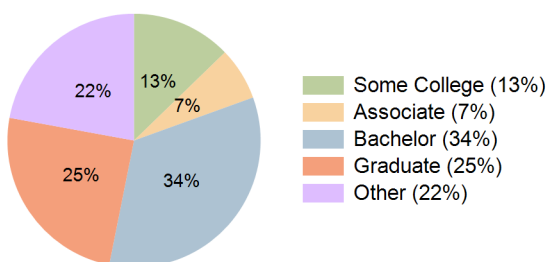
**Current Year Demographics**

Current Population	4,953	92,099	292,707	100,957
Total Daytime Pop	8,047	125,855	335,537	138,949
Daytime Workers	5,503	82,179	195,317	90,418
Average Household Income	\$132,610	\$184,221	\$158,456	\$178,539
Median Household Income	\$106,208	\$124,487	\$105,203	\$120,862
Total Households	2,187	35,197	111,622	39,190
Median Home Value	\$340,050	\$398,907	\$383,836	\$398,831
Bachelors Degree	32.8%	33.6%	27.5%	33.7%
Graduate Degree	20.0%	24.8%	21.1%	24.7%
Consumer Spending Index	113	155	135	151

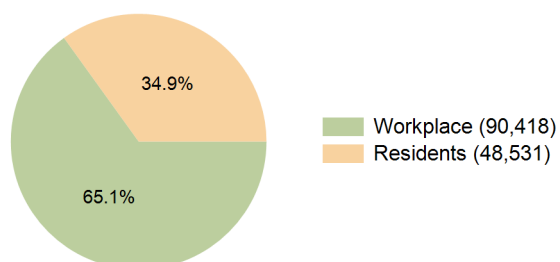
**2030 Demographic Projections**

Projected Population	4,815	90,022	286,954	98,721
Projected 5 Year Annual Growth Rate (Pop)	-0.6%	-0.5%	-0.4%	-0.5%
Projected Households	2,168	34,993	111,367	38,991
Projected 5 Year Annual Growth Rate (HH)	-0.2%	-0.1%	-0.1%	-0.1%

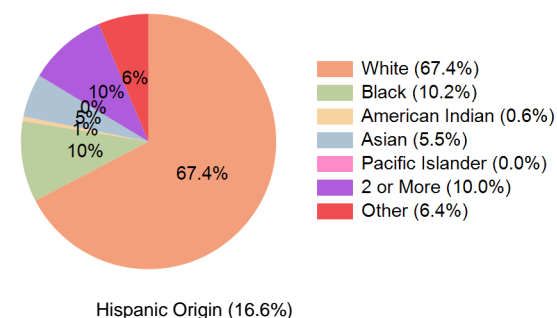
**Education (10 Minute Drive)**



**Daytime Population (10 Minute Drive)**

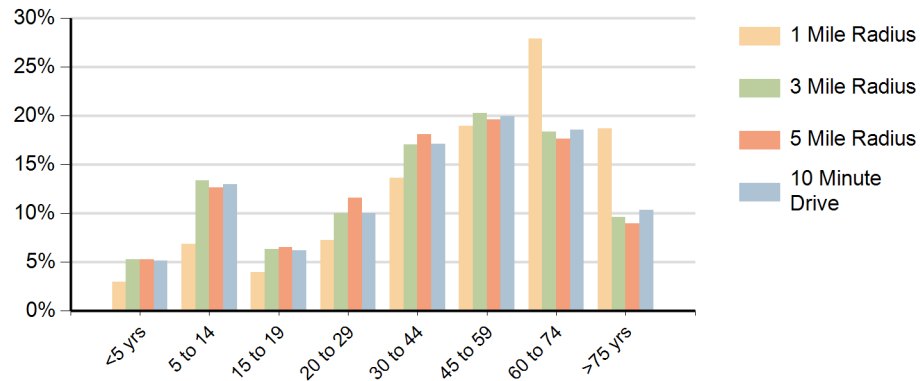


**Race (10 Minute Drive)**

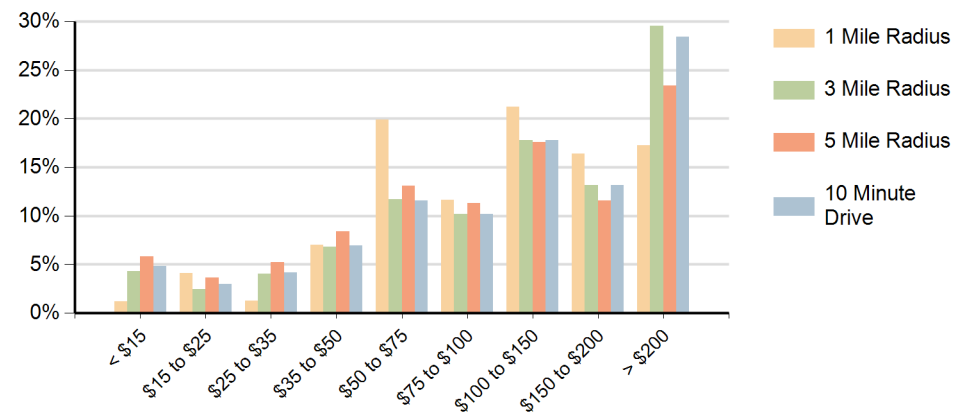


Hispanic Origin (16.6%)

### Population by Age Range



### Households by Income Range (\$000)



Westchester Commons Westchester, Illinois		1 Mile Radius	3 Mile Radius	5 Mile Radius	10 Minute Drive
Population	Current Estimated Population	4,953	92,099	292,707	100,957
	2020 Census Population	5,227	97,121	304,867	106,243
	2010 Census Population	5,377	94,730	297,742	103,422
	Historical Annual Growth 2010 to 2020	-0.3%	0.3%	0.2%	0.3%
	Estimated Annual Growth 2020 to 2025	-1.0%	-1.0%	-0.8%	-1.0%
	Projected Annual Growth 2025 to 2030	-0.6%	-0.5%	-0.4%	-0.5%
Households	Current Estimated Households	2,187	35,197	111,622	39,190
	2020 Census Households	2,237	35,666	112,241	39,686
	2010 Census Households	2,238	35,477	109,723	39,420
	Historical Annual Growth 2010 to 2020	0.0%	0.1%	0.2%	0.1%
	Estimated Annual Growth 2020 to 2025	-0.4%	-0.3%	-0.1%	-0.2%
	Projected Annual Growth 2025 to 2030	-0.2%	-0.1%	-0.1%	-0.1%
Race	Population per Household	2.2	2.6	2.6	2.5
	White	69.7%	68.5%	56.0%	67.4%
	Black or African American	12.1%	10.9%	15.8%	10.2%
	American Indian	0.5%	0.6%	0.8%	0.6%
	Asian	4.5%	4.4%	5.8%	5.5%
	Pacific Islander	0.0%	0.0%	0.0%	0.0%
	2 or More Races	8.4%	9.8%	10.5%	10.0%
	Other Races	4.8%	5.9%	11.2%	6.4%
Hispanic Origin		14.8%	15.7%	23.1%	16.6%