

Regency Commons
Blue Ash, Ohio

1 Mile Radius

3 Mile Radius

5 Mile Radius

10 Minute Drive

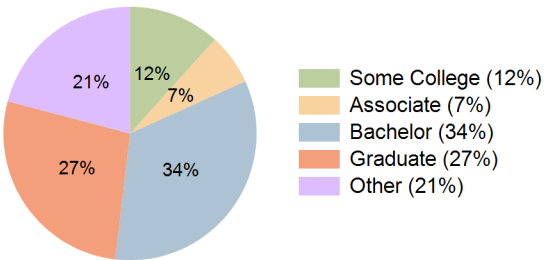
Current Year Demographics

Current Population	2,938	49,981	141,068	52,461
Total Daytime Pop	10,413	86,987	224,932	100,181
Daytime Workers	9,009	62,327	156,964	74,919
Average Household Income	\$146,381	\$157,117	\$145,368	\$149,425
Median Household Income	\$92,012	\$110,406	\$102,939	\$103,720
Total Households	1,135	19,767	55,678	21,072
Median Home Value	\$322,304	\$372,470	\$347,052	\$365,018
Bachelors Degree	33.0%	34.2%	33.0%	33.6%
Graduate Degree	30.1%	28.9%	25.5%	27.3%
Consumer Spending Index	128	137	127	130

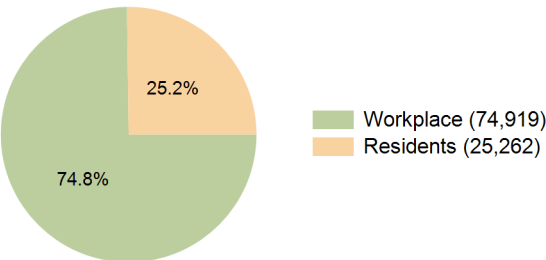
2029 Demographic Projections

Projected Population	3,138	50,686	142,645	53,260
Projected 5 Year Annual Growth Rate (Pop)	1.3%	0.3%	0.2%	0.3%
Projected Households	1,201	19,957	56,211	21,321
Projected 5 Year Annual Growth Rate (HH)	1.1%	0.2%	0.2%	0.2%

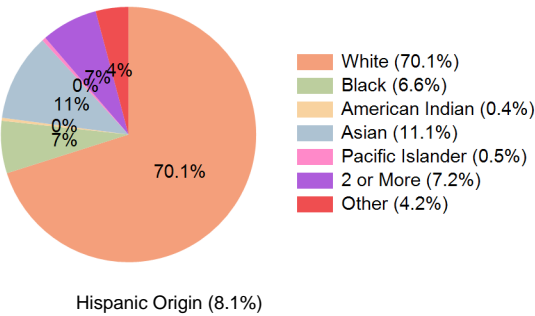
Education (10 Minute Drive)



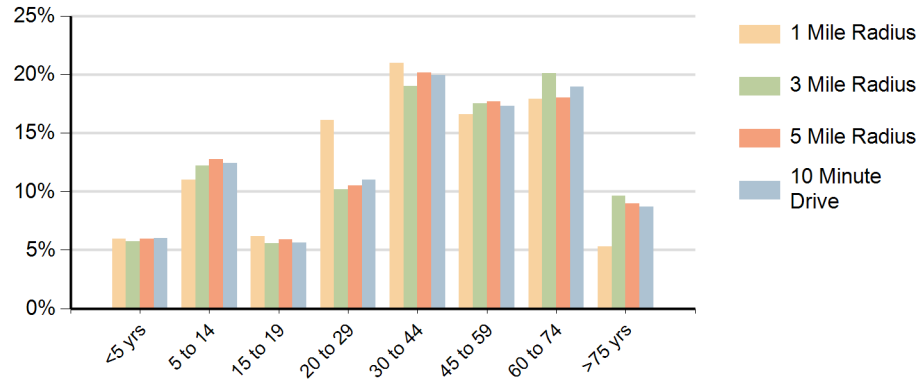
Daytime Population (10 Minute Drive)



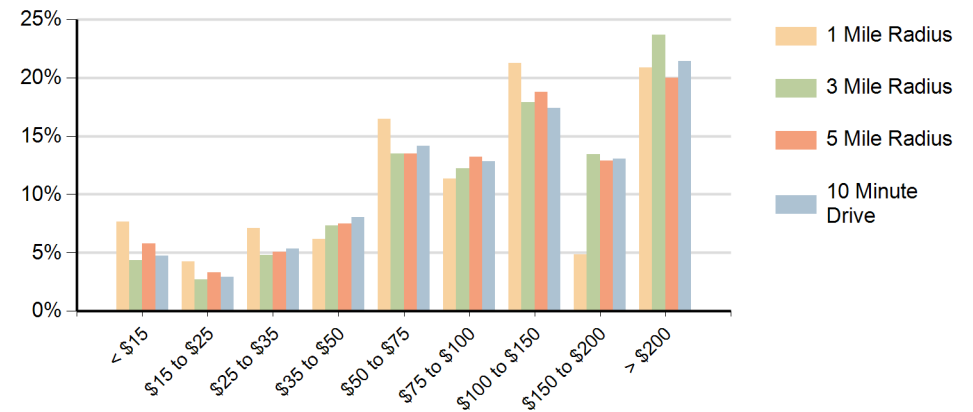
Race (10 Minute Drive)



Population by Age Range



Households by Income Range (\$000)



Regency Commons Blue Ash, Ohio		1 Mile Radius	3 Mile Radius	5 Mile Radius	10 Minute Drive
Population	Current Estimated Population	2,938	49,981	141,068	52,461
	2020 Census Population	2,916	49,110	138,950	51,498
	2010 Census Population	2,677	46,452	132,647	48,498
	Historical Annual Growth 2010 to 2020	0.9%	0.6%	0.5%	0.6%
	Estimated Annual Growth 2020 to 2024	0.2%	0.4%	0.4%	0.4%
	Projected Annual Growth 2024 to 2029	1.3%	0.3%	0.2%	0.3%
Households	Current Estimated Households	1,135	19,767	55,678	21,072
	2020 Census Households	1,119	19,469	54,838	20,687
	2010 Census Households	1,051	18,782	52,880	19,747
	Historical Annual Growth 2010 to 2020	0.6%	0.4%	0.4%	0.5%
	Estimated Annual Growth 2020 to 2024	0.3%	0.4%	0.4%	0.4%
	Projected Annual Growth 2024 to 2029	1.1%	0.2%	0.2%	0.2%
Race	Population per Household	2.6	2.5	2.5	2.5
	White	61.6%	73.4%	70.6%	70.1%
	Black or African American	14.4%	6.1%	8.3%	6.6%
	American Indian	0.2%	0.3%	0.4%	0.4%
	Asian	13.4%	9.4%	10.6%	11.1%
	Pacific Islander	0.0%	0.5%	0.3%	0.5%
	2 or More Races	8.5%	6.6%	6.8%	7.2%
	Other Races	1.9%	3.8%	3.1%	4.2%
Hispanic Origin		4.5%	7.1%	6.6%	8.1%