

Golden Hills Plaza
Paso Robles, California

1 Mile Radius

3 Mile Radius

5 Mile Radius

10 Minute Drive

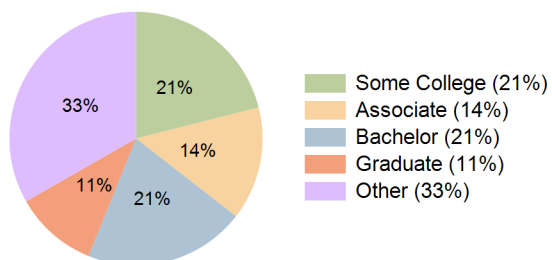
Current Year Demographics

Current Population	2,726	30,691	36,990	31,008
Total Daytime Pop	3,777	34,344	39,878	34,476
Daytime Workers	2,350	18,505	20,845	18,669
Average Household Income	\$135,685	\$118,803	\$124,577	\$120,528
Median Household Income	\$106,767	\$89,725	\$94,786	\$91,400
Total Households	992	11,726	13,984	11,665
Median Home Value	\$798,851	\$718,723	\$736,065	\$711,579
Bachelors Degree	28.6%	21.6%	21.4%	20.6%
Graduate Degree	16.4%	11.3%	11.5%	10.6%
Consumer Spending Index	114	101	106	102

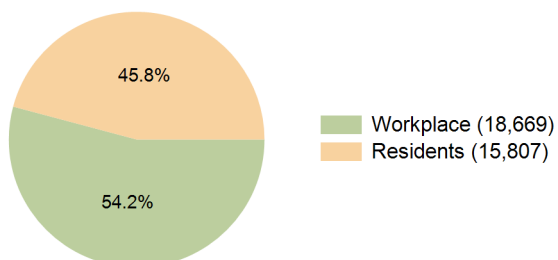
2030 Demographic Projections

Projected Population	2,781	30,775	37,063	31,133
Projected 5 Year Annual Growth Rate (Pop)	0.4%	0.1%	0.0%	0.1%
Projected Households	1,031	11,959	14,238	11,912
Projected 5 Year Annual Growth Rate (HH)	0.8%	0.4%	0.4%	0.4%

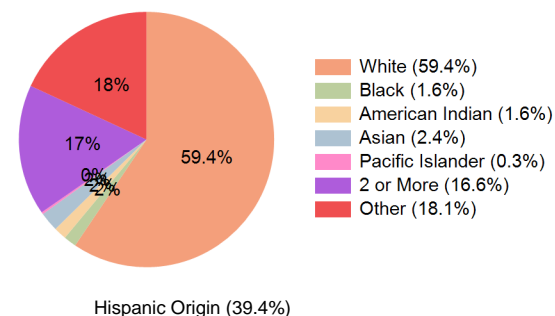
Education (10 Minute Drive)



Daytime Population (10 Minute Drive)

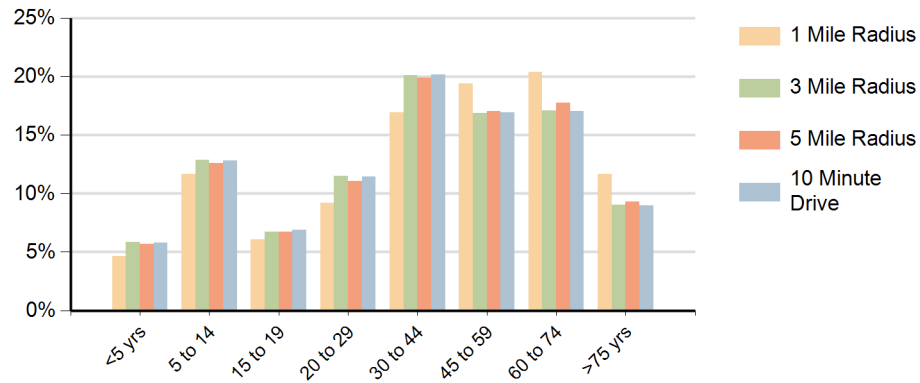


Race (10 Minute Drive)

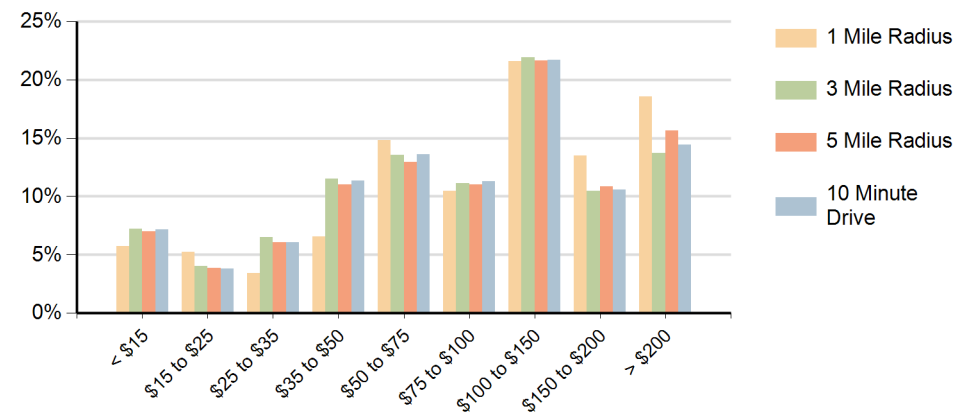


Hispanic Origin (39.4%)

Population by Age Range



Households by Income Range (\$000)



Golden Hills Plaza Paso Robles, California		1 Mile Radius	3 Mile Radius	5 Mile Radius	10 Minute Drive
Population	Current Estimated Population	2,726	30,691	36,990	31,008
	2020 Census Population	2,748	30,845	37,164	31,104
	2010 Census Population	2,151	29,179	35,141	29,361
	Historical Annual Growth 2010 to 2020	2.5%	0.6%	0.6%	0.6%
	Estimated Annual Growth 2020 to 2025	-0.2%	-0.1%	-0.1%	-0.1%
	Projected Annual Growth 2025 to 2030	0.4%	0.1%	0.0%	0.1%
Households	Current Estimated Households	992	11,726	13,984	11,665
	2020 Census Households	971	11,502	13,732	11,425
	2010 Census Households	754	10,714	12,856	10,634
	Historical Annual Growth 2010 to 2020	2.6%	0.7%	0.7%	0.7%
	Estimated Annual Growth 2020 to 2025	0.4%	0.4%	0.4%	0.4%
	Projected Annual Growth 2025 to 2030	0.8%	0.4%	0.4%	0.4%
Race	Population per Household	2.7	2.6	2.6	2.6
	White	73.5%	59.5%	61.1%	59.4%
	Black or African American	1.4%	1.7%	1.5%	1.6%
	American Indian	1.1%	1.6%	1.6%	1.6%
	Asian	3.2%	2.5%	2.4%	2.4%
	Pacific Islander	0.3%	0.3%	0.3%	0.3%
	2 or More Races	13.6%	16.4%	16.3%	16.6%
	Other Races	6.8%	18.0%	16.8%	18.1%
Hispanic Origin		21.6%	39.3%	37.3%	39.4%