

NorthGate Village
Greeley, Colorado

1 Mile Radius

3 Mile Radius

5 Mile Radius

10 Minute Drive

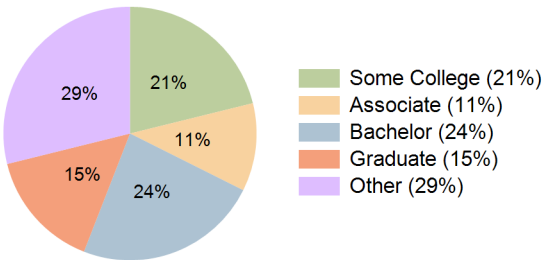
Current Year Demographics

Current Population	5,556	49,316	108,918	52,885
Total Daytime Pop	6,395	46,840	106,167	51,379
Daytime Workers	3,576	22,142	49,859	24,623
Average Household Income	\$112,423	\$120,421	\$100,759	\$116,669
Median Household Income	\$100,919	\$103,265	\$80,108	\$100,225
Total Households	2,365	18,359	39,723	19,467
Median Home Value	\$546,235	\$502,538	\$448,772	\$490,960
Bachelors Degree	26.2%	23.8%	19.2%	23.6%
Graduate Degree	17.0%	15.9%	13.1%	15.2%
Consumer Spending Index	96	103	87	100

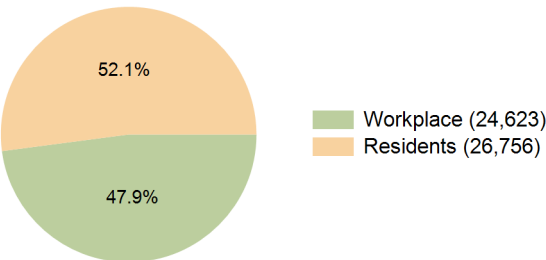
2030 Demographic Projections

Projected Population	6,331	55,231	119,960	59,158
Projected 5 Year Annual Growth Rate (Pop)	2.7%	2.3%	2.0%	2.3%
Projected Households	2,712	20,566	43,902	21,809
Projected 5 Year Annual Growth Rate (HH)	2.8%	2.3%	2.0%	2.3%

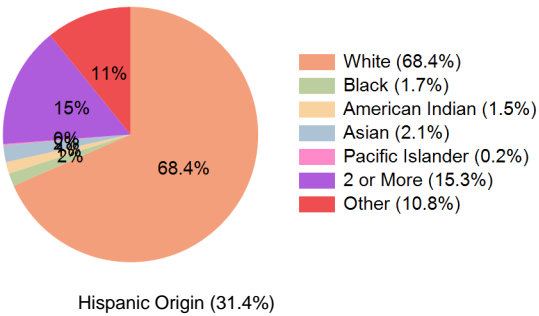
Education (10 Minute Drive)



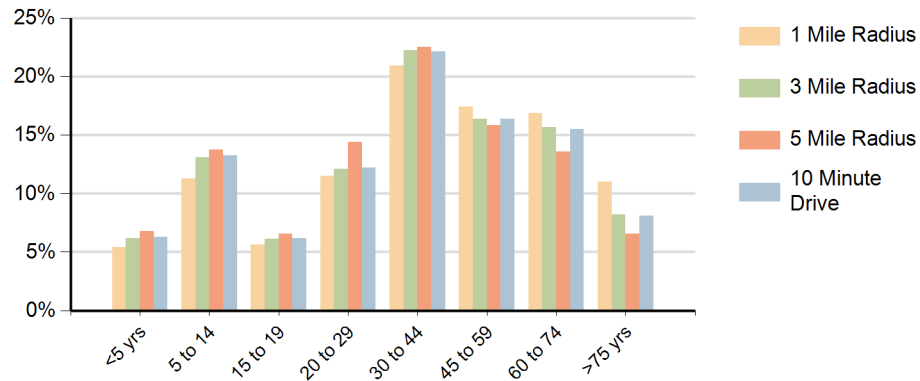
Daytime Population (10 Minute Drive)



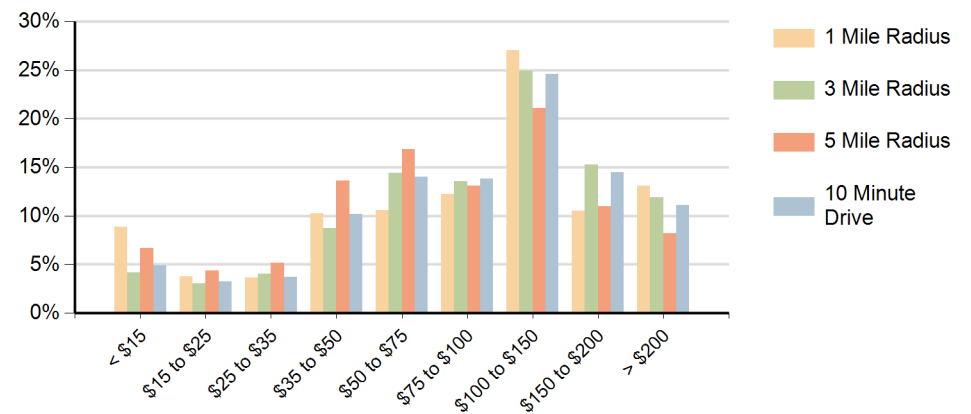
Race (10 Minute Drive)



Population by Age Range



Households by Income Range (\$000)



NorthGate Village Greeley, Colorado		1 Mile Radius	3 Mile Radius	5 Mile Radius	10 Minute Drive
Population	Current Estimated Population	5,556	49,316	108,918	52,885
	2020 Census Population	4,477	41,966	98,646	45,776
	2010 Census Population	2,905	31,692	80,699	35,968
	Historical Annual Growth 2010 to 2020	4.4%	2.9%	2.0%	2.4%
	Estimated Annual Growth 2020 to 2025	4.2%	3.1%	1.9%	2.8%
	Projected Annual Growth 2025 to 2030	2.7%	2.3%	2.0%	2.3%
Households	Current Estimated Households	2,365	18,359	39,723	19,467
	2020 Census Households	1,878	15,541	35,526	16,805
	2010 Census Households	1,150	12,006	29,999	13,597
	Historical Annual Growth 2010 to 2020	5.0%	2.6%	1.7%	2.1%
	Estimated Annual Growth 2020 to 2025	4.5%	3.2%	2.2%	2.8%
	Projected Annual Growth 2025 to 2030	2.8%	2.3%	2.0%	2.3%
Race	Population per Household	2.3	2.7	2.7	2.7
	White	74.2%	71.0%	62.0%	68.4%
	Black or African American	1.6%	1.4%	2.2%	1.7%
	American Indian	1.2%	1.3%	1.6%	1.5%
	Asian	2.1%	2.0%	1.9%	2.1%
	Pacific Islander	0.3%	0.2%	0.2%	0.2%
	2 or More Races	14.0%	15.0%	16.8%	15.3%
	Other Races	6.7%	9.2%	15.4%	10.8%
Hispanic Origin		23.4%	29.0%	40.4%	31.4%