

Julington Village
Jacksonville, Florida

1 Mile Radius

3 Mile Radius

5 Mile Radius

10 Minute Drive

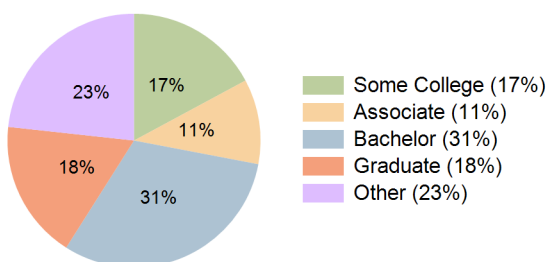
Current Year Demographics

Current Population	4,765	43,480	112,551	50,010
Total Daytime Pop	5,549	35,625	93,940	46,116
Daytime Workers	2,616	12,864	36,939	19,633
Average Household Income	\$156,829	\$161,006	\$146,620	\$156,554
Median Household Income	\$130,946	\$128,110	\$114,544	\$123,950
Total Households	1,608	15,738	41,753	18,535
Median Home Value	\$594,050	\$485,340	\$461,209	\$484,917
Bachelors Degree	31.2%	34.0%	30.5%	31.0%
Graduate Degree	15.5%	17.8%	16.5%	17.7%
Consumer Spending Index	131	136	124	132

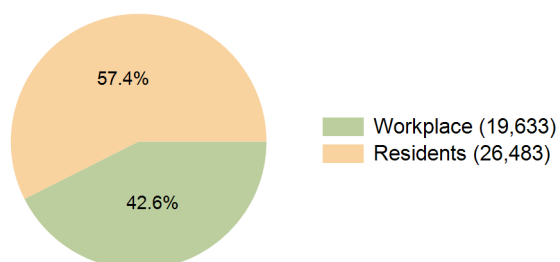
2030 Demographic Projections

Projected Population	4,712	45,588	118,083	52,189
Projected 5 Year Annual Growth Rate (Pop)	-0.2%	1.0%	1.0%	0.9%
Projected Households	1,578	16,474	43,597	19,304
Projected 5 Year Annual Growth Rate (HH)	-0.4%	0.9%	0.9%	0.8%

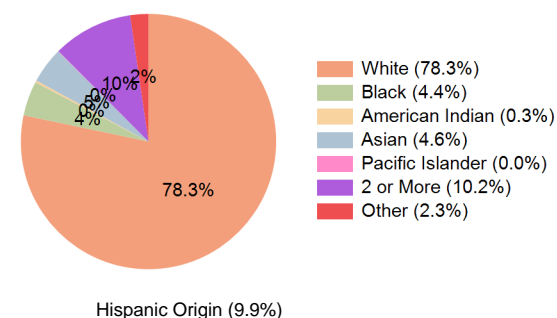
Education (10 Minute Drive)



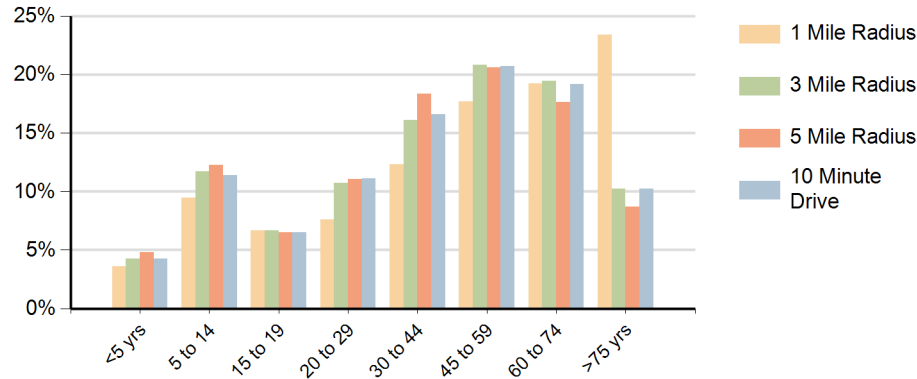
Daytime Population (10 Minute Drive)



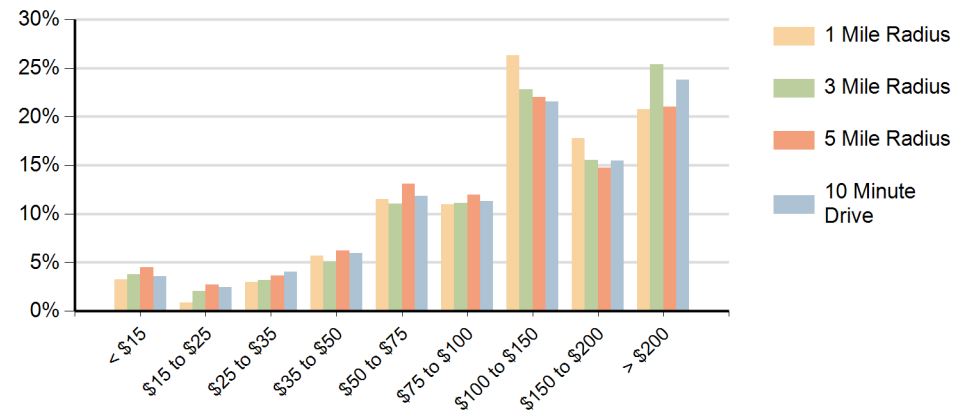
Race (10 Minute Drive)



Population by Age Range



Households by Income Range (\$000)



Julington Village Jacksonville, Florida		1 Mile Radius	3 Mile Radius	5 Mile Radius	10 Minute Drive
Population	Current Estimated Population	4,765	43,480	112,551	50,010
	2020 Census Population	4,757	42,821	107,365	49,427
	2010 Census Population	4,395	37,423	89,466	44,555
	Historical Annual Growth 2010 to 2020	0.8%	1.4%	1.8%	1.0%
	Estimated Annual Growth 2020 to 2025	0.0%	0.3%	0.9%	0.2%
	Projected Annual Growth 2025 to 2030	-0.2%	1.0%	1.0%	0.9%
Households	Current Estimated Households	1,608	15,738	41,753	18,535
	2020 Census Households	1,608	15,335	39,698	18,119
	2010 Census Households	1,604	13,585	33,820	16,508
	Historical Annual Growth 2010 to 2020	0.0%	1.2%	1.6%	0.9%
	Estimated Annual Growth 2020 to 2025	0.0%	0.5%	1.0%	0.4%
	Projected Annual Growth 2025 to 2030	-0.4%	0.9%	0.9%	0.8%
Race	Population per Household	2.7	2.7	2.7	2.7
	White	82.3%	78.7%	73.5%	78.3%
	Black or African American	2.2%	4.2%	6.0%	4.4%
	American Indian	0.1%	0.3%	0.3%	0.3%
	Asian	4.3%	4.5%	6.0%	4.6%
	Pacific Islander	0.0%	0.0%	0.1%	0.0%
	2 or More Races	9.2%	10.2%	11.1%	10.2%
	Other Races	1.8%	2.1%	3.1%	2.3%
Hispanic Origin		7.2%	9.4%	11.1%	9.9%