

Crossroads Commons  
Boulder, Colorado

1 Mile Radius

3 Mile Radius

5 Mile Radius

10 Minute Drive

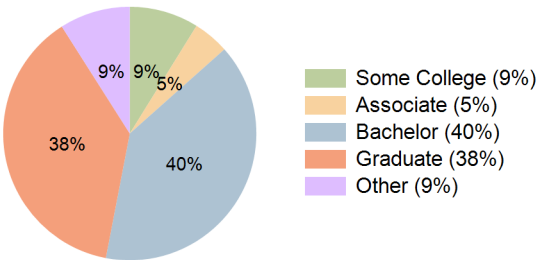
Current Year Demographics

Current Population	18,427	99,308	122,978	95,474
Total Daytime Pop	35,310	154,487	180,557	147,697
Daytime Workers	28,886	110,045	126,075	105,031
Average Household Income	\$110,918	\$141,853	\$151,265	\$136,174
Median Household Income	\$70,288	\$85,116	\$95,060	\$82,003
Total Households	9,280	40,378	50,945	38,933
Median Home Value	\$773,614	\$1,026,709	\$1,034,812	\$978,704
Bachelors Degree	38.3%	39.7%	39.3%	39.6%
Graduate Degree	32.5%	38.7%	39.2%	38.0%
Consumer Spending Index	99	125	133	121

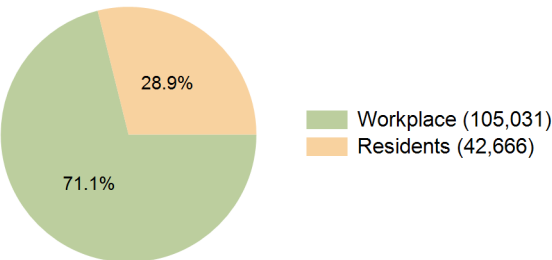
2029 Demographic Projections

Projected Population	18,096	98,861	121,878	95,159
Projected 5 Year Annual Growth Rate (Pop)	-0.4%	-0.1%	-0.2%	-0.1%
Projected Households	9,242	40,709	51,124	39,286
Projected 5 Year Annual Growth Rate (HH)	-0.1%	0.2%	0.1%	0.2%

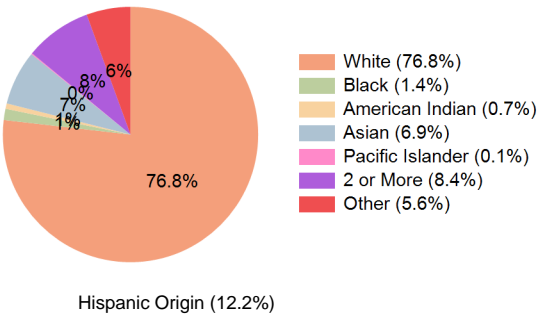
Education (10 Minute Drive)



Daytime Population (10 Minute Drive)

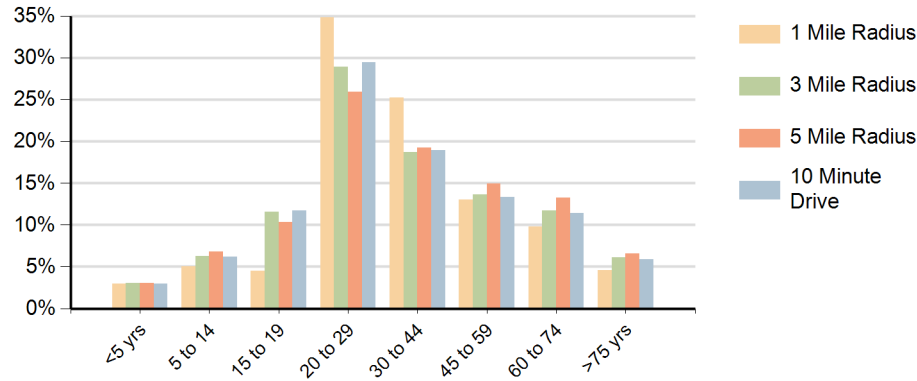


Race (10 Minute Drive)

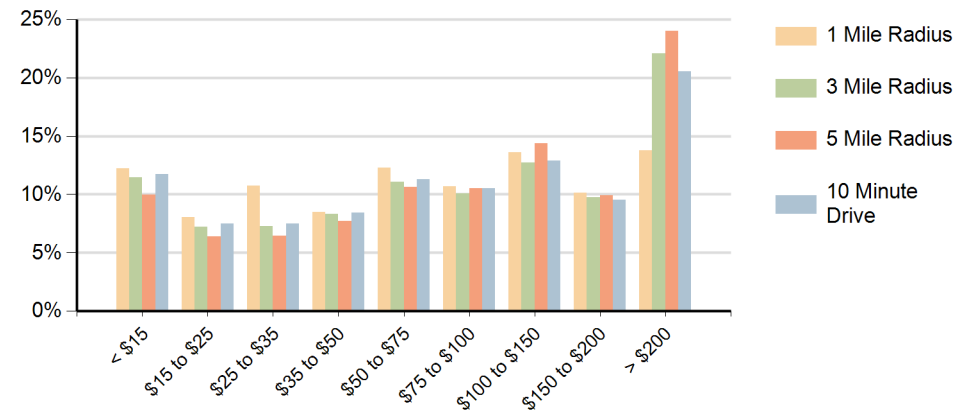


Hispanic Origin (12.2%)

### Population by Age Range



### Households by Income Range (\$000)



Crossroads Commons Boulder, Colorado		1 Mile Radius	3 Mile Radius	5 Mile Radius	10 Minute Drive
Population	Current Estimated Population	18,427	99,308	122,978	95,474
	2020 Census Population	18,100	99,478	124,228	95,738
	2010 Census Population	15,723	90,250	113,600	86,466
	Historical Annual Growth 2010 to 2020	1.4%	1.0%	0.9%	1.0%
	Estimated Annual Growth 2020 to 2024	0.4%	0.0%	-0.2%	-0.1%
	Projected Annual Growth 2024 to 2029	-0.4%	-0.1%	-0.2%	-0.1%
Households	Current Estimated Households	9,280	40,378	50,945	38,933
	2020 Census Households	8,998	39,693	50,517	38,227
	2010 Census Households	7,967	38,225	48,397	36,722
	Historical Annual Growth 2010 to 2020	1.2%	0.4%	0.4%	0.4%
	Estimated Annual Growth 2020 to 2024	0.7%	0.4%	0.2%	0.4%
	Projected Annual Growth 2024 to 2029	-0.1%	0.2%	0.1%	0.2%
Race	Population per Household	1.9	2.2	2.2	2.1
	White	73.9%	77.1%	78.4%	76.8%
	Black or African American	1.3%	1.4%	1.3%	1.4%
	American Indian	0.7%	0.7%	0.6%	0.7%
	Asian	8.0%	6.8%	6.5%	6.9%
	Pacific Islander	0.1%	0.1%	0.1%	0.1%
	2 or More Races	9.7%	8.4%	8.5%	8.4%
	Other Races	6.3%	5.4%	4.7%	5.6%
Hispanic Origin		14.6%	11.9%	10.8%	12.2%