

**Valencia Crossroads**  
Valencia, California

**1 Mile Radius**

**3 Mile Radius**

**5 Mile Radius**

**10 Minute Drive**

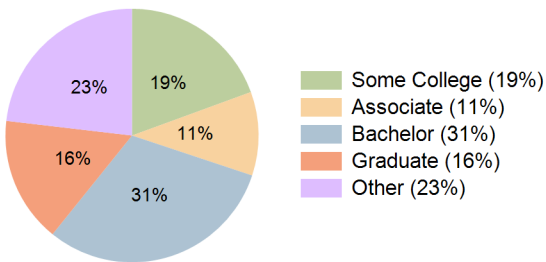
**Current Year Demographics**

Current Population	13,347	101,284	191,643	91,231
Total Daytime Pop	24,843	131,065	194,865	117,131
Daytime Workers	18,739	79,465	102,998	71,498
Average Household Income	\$143,213	\$169,894	\$168,841	\$157,890
Median Household Income	\$110,637	\$134,525	\$136,265	\$124,557
Total Households	6,069	36,974	65,071	33,250
Median Home Value	\$820,981	\$857,490	\$821,386	\$827,576
Bachelors Degree	33.7%	33.1%	30.1%	30.7%
Graduate Degree	18.6%	16.8%	14.7%	16.1%
Consumer Spending Index	120	143	142	133

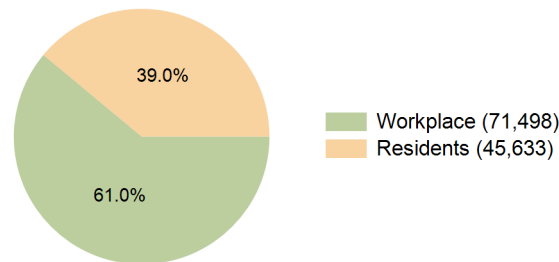
**2030 Demographic Projections**

Projected Population	12,992	98,957	187,398	88,892
Projected 5 Year Annual Growth Rate (Pop)	-0.5%	-0.5%	-0.5%	-0.5%
Projected Households	6,042	36,837	64,867	33,054
Projected 5 Year Annual Growth Rate (HH)	-0.1%	-0.1%	-0.1%	-0.1%

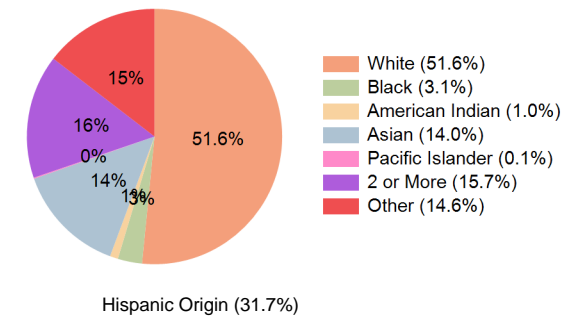
**Education (10 Minute Drive)**



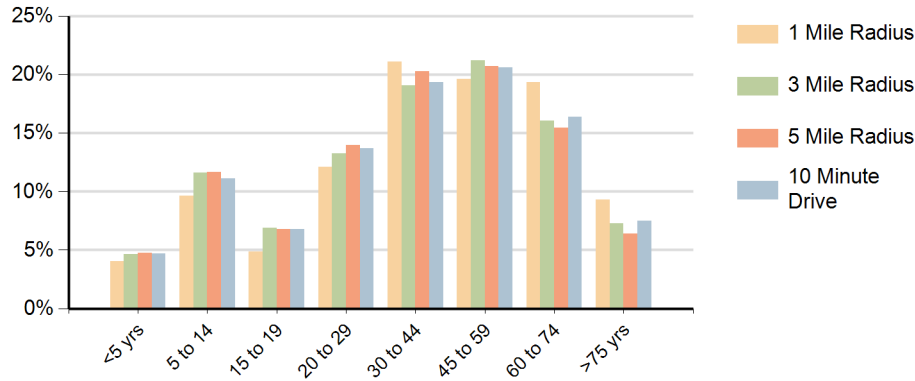
**Daytime Population (10 Minute Drive)**



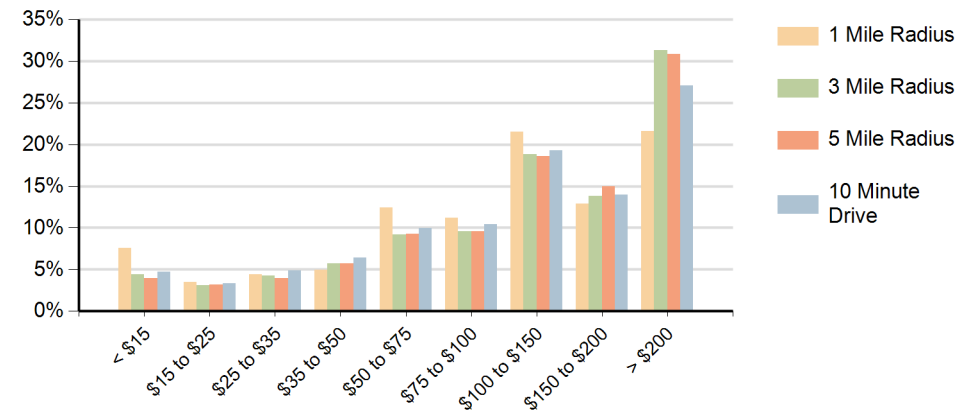
**Race (10 Minute Drive)**



## Population by Age Range



## Households by Income Range (\$000)



Valencia Crossroads Valencia, California		1 Mile Radius	3 Mile Radius	5 Mile Radius	10 Minute Drive
Population	Current Estimated Population	13,347	101,284	191,643	91,231
	2020 Census Population	13,982	100,187	193,310	95,360
	2010 Census Population	13,633	96,126	180,973	93,840
	Historical Annual Growth 2010 to 2020	0.3%	0.4%	0.7%	0.2%
	Estimated Annual Growth 2020 to 2025	-0.9%	0.2%	-0.2%	-0.8%
	Projected Annual Growth 2025 to 2030	-0.5%	-0.5%	-0.5%	-0.5%
Households	Current Estimated Households	6,069	36,974	65,071	33,250
	2020 Census Households	6,119	35,621	63,765	33,591
	2010 Census Households	5,838	33,918	58,467	32,702
	Historical Annual Growth 2010 to 2020	0.5%	0.5%	0.9%	0.3%
	Estimated Annual Growth 2020 to 2025	-0.2%	0.7%	0.4%	-0.2%
	Projected Annual Growth 2025 to 2030	-0.1%	-0.1%	-0.1%	-0.1%
Population per Household		2.2	2.7	2.8	2.7
Race	White	61.1%	52.4%	49.7%	51.6%
	Black or African American	3.5%	3.2%	4.1%	3.1%
	American Indian	0.7%	0.9%	1.0%	1.0%
	Asian	12.4%	16.5%	14.7%	14.0%
	Pacific Islander	0.1%	0.1%	0.2%	0.1%
	2 or More Races	14.6%	15.1%	15.2%	15.7%
	Other Races	7.6%	11.8%	15.2%	14.6%
	Hispanic Origin	22.4%	27.5%	32.1%	31.7%