

Sweetwater Plaza  
Sugar Land, Texas

1 Mile Radius

3 Mile Radius

5 Mile Radius

10 Minute Drive

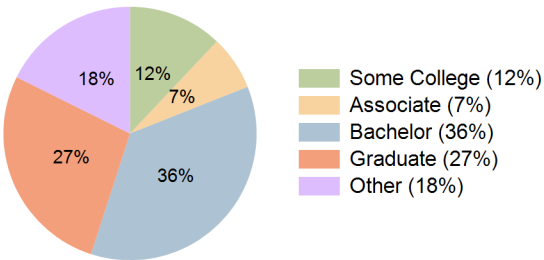
Current Year Demographics

Current Population	10,617	73,929	202,296	113,972
Total Daytime Pop	25,060	89,242	217,169	155,856
Daytime Workers	19,421	50,624	114,449	98,191
Average Household Income	\$174,045	\$185,507	\$161,473	\$166,810
Median Household Income	\$128,796	\$142,430	\$119,396	\$120,947
Total Households	3,942	26,079	68,822	41,108
Median Home Value	\$478,745	\$466,113	\$409,633	\$430,969
Bachelors Degree	33.6%	37.0%	34.4%	36.0%
Graduate Degree	32.5%	32.0%	26.3%	27.3%
Consumer Spending Index	151	160	141	145

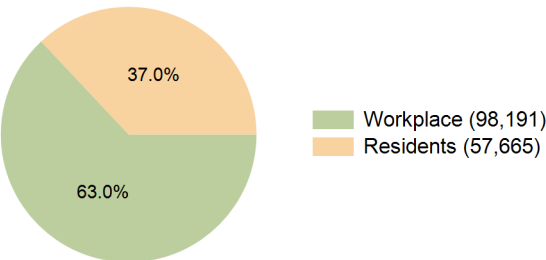
2029 Demographic Projections

Projected Population	10,957	76,557	215,590	120,630
Projected 5 Year Annual Growth Rate (Pop)	0.6%	0.7%	1.3%	1.1%
Projected Households	4,117	27,380	73,612	44,216
Projected 5 Year Annual Growth Rate (HH)	0.9%	1.0%	1.4%	1.5%

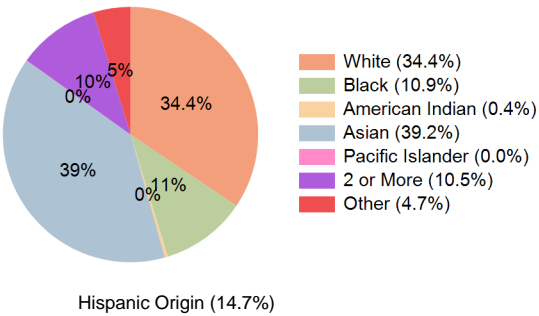
Education (10 Minute Drive)



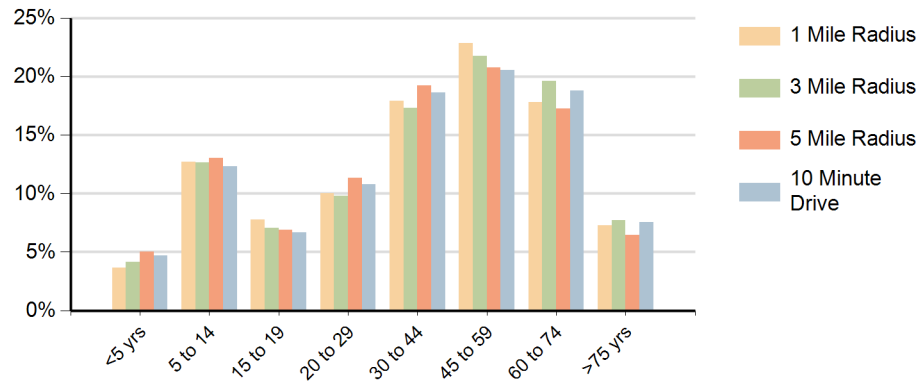
Daytime Population (10 Minute Drive)



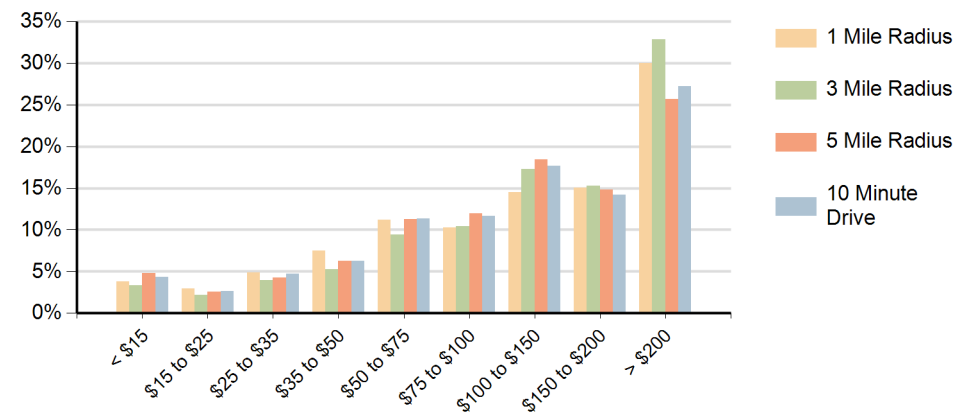
Race (10 Minute Drive)



### Population by Age Range



### Households by Income Range (\$000)



Sweetwater Plaza Sugar Land, Texas		1 Mile Radius	3 Mile Radius	5 Mile Radius	10 Minute Drive
Population	Current Estimated Population	10,617	73,929	202,296	113,972
	2020 Census Population	10,660	74,023	198,414	112,914
	2010 Census Population	8,796	67,772	176,578	103,024
	Historical Annual Growth 2010 to 2020	1.9%	0.9%	1.2%	0.9%
	Estimated Annual Growth 2020 to 2024	-0.1%	0.0%	0.5%	0.2%
	Projected Annual Growth 2024 to 2029	0.6%	0.7%	1.3%	1.1%
Households	Current Estimated Households	3,942	26,079	68,822	41,108
	2020 Census Households	3,901	25,695	66,595	40,004
	2010 Census Households	3,266	23,210	58,307	36,016
	Historical Annual Growth 2010 to 2020	1.8%	1.0%	1.3%	1.1%
	Estimated Annual Growth 2020 to 2024	0.3%	0.4%	0.8%	0.6%
	Projected Annual Growth 2024 to 2029	0.9%	1.0%	1.4%	1.5%
Race	Population per Household	2.7	2.8	2.9	2.8
	White	26.0%	35.0%	30.2%	34.4%
	Black or African American	5.0%	6.3%	13.0%	10.9%
	American Indian	0.2%	0.3%	0.4%	0.4%
	Asian	59.0%	45.9%	41.7%	39.2%
	Pacific Islander	0.0%	0.0%	0.0%	0.0%
	2 or More Races	7.8%	9.7%	9.9%	10.5%
	Other Races	2.1%	2.7%	4.8%	4.7%
Hispanic Origin		8.6%	11.0%	14.4%	14.7%