

Seal Beach Center
Seal Beach, California

1 Mile Radius

3 Mile Radius

5 Mile Radius

10 Minute Drive

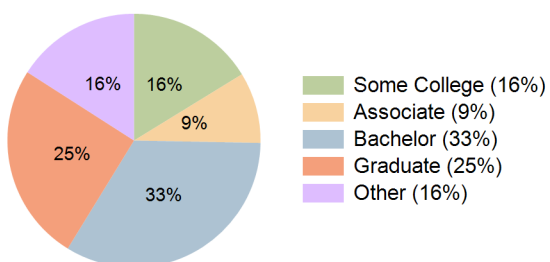
Current Year Demographics

Current Population	9,577	62,699	285,280	78,675
Total Daytime Pop	12,158	71,746	262,709	87,610
Daytime Workers	7,795	40,364	128,623	48,123
Average Household Income	\$169,375	\$153,914	\$140,215	\$152,842
Median Household Income	\$129,013	\$108,729	\$102,763	\$108,136
Total Households	4,698	32,227	122,632	38,073
Median Home Value	\$1,451,718	\$1,150,541	\$977,710	\$1,078,606
Bachelors Degree	37.1%	34.3%	30.8%	33.5%
Graduate Degree	25.8%	26.4%	19.3%	25.3%
Consumer Spending Index	142	130	119	129

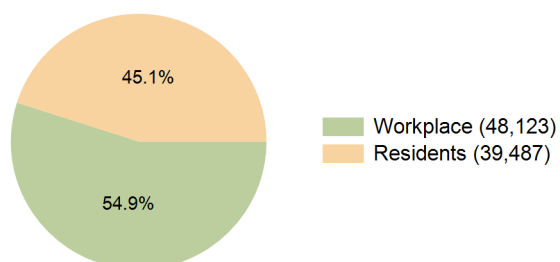
2030 Demographic Projections

Projected Population	9,416	61,440	279,262	77,160
Projected 5 Year Annual Growth Rate (Pop)	-0.3%	-0.4%	-0.4%	-0.4%
Projected Households	4,705	32,148	122,421	37,995
Projected 5 Year Annual Growth Rate (HH)	0.0%	-0.1%	0.0%	0.0%

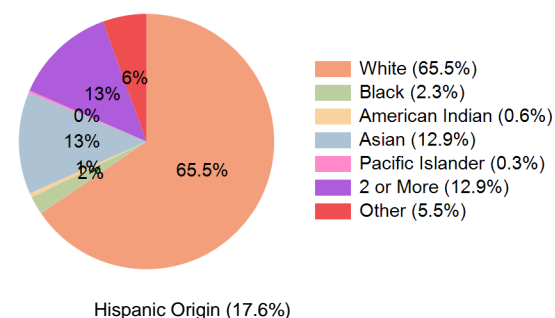
Education (10 Minute Drive)



Daytime Population (10 Minute Drive)

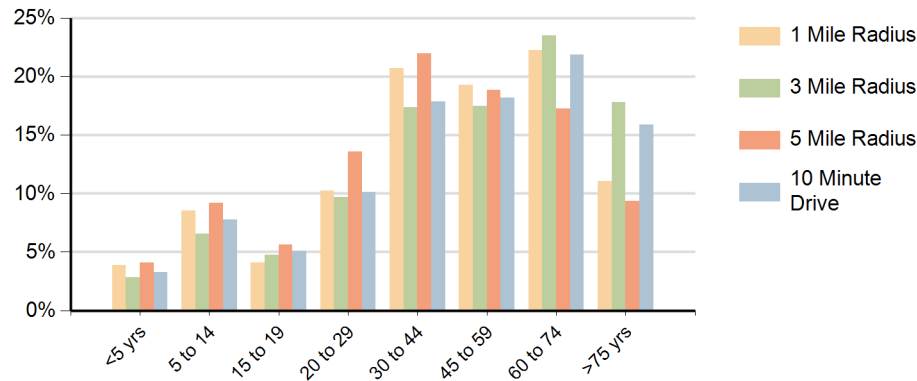


Race (10 Minute Drive)

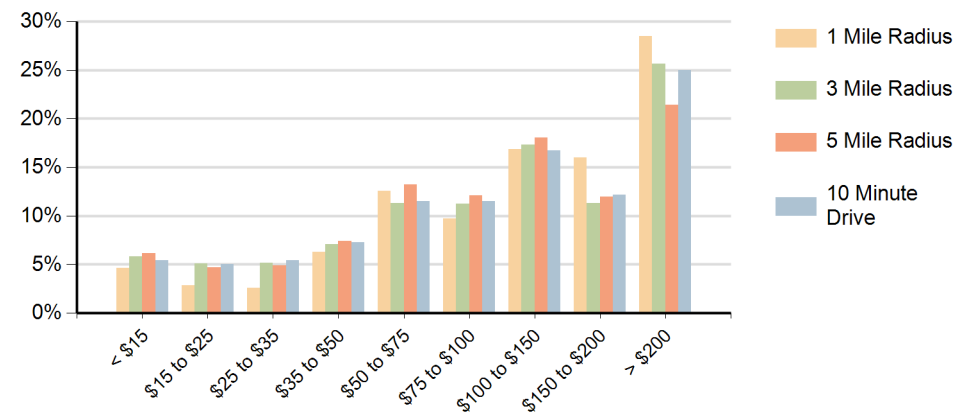


Hispanic Origin (17.6%)

Population by Age Range



Households by Income Range (\$000)



Seal Beach Center Seal Beach, California		1 Mile Radius	3 Mile Radius	5 Mile Radius	10 Minute Drive
Population	Current Estimated Population	9,577	62,699	285,280	78,675
	2020 Census Population	9,864	65,098	295,720	81,715
	2010 Census Population	9,623	64,395	290,421	78,907
	Historical Annual Growth 2010 to 2020	0.3%	0.1%	0.2%	0.4%
	Estimated Annual Growth 2020 to 2025	-0.6%	-0.7%	-0.7%	-0.7%
	Projected Annual Growth 2025 to 2030	-0.3%	-0.4%	-0.4%	-0.4%
Households	Current Estimated Households	4,698	32,227	122,632	38,073
	2020 Census Households	4,717	32,509	123,262	38,411
	2010 Census Households	4,662	32,431	120,795	37,759
	Historical Annual Growth 2010 to 2020	0.1%	0.0%	0.2%	0.2%
	Estimated Annual Growth 2020 to 2025	-0.1%	-0.2%	-0.1%	-0.2%
	Projected Annual Growth 2025 to 2030	0.0%	-0.1%	0.0%	0.0%
Race	Population per Household	2.0	1.9	2.3	2.0
	White	72.8%	68.0%	51.1%	65.5%
	Black or African American	2.0%	2.4%	5.6%	2.3%
	American Indian	0.6%	0.5%	1.0%	0.6%
	Asian	6.9%	11.7%	13.9%	12.9%
	Pacific Islander	0.4%	0.3%	0.4%	0.3%
	2 or More Races	13.3%	12.6%	14.5%	12.9%
	Other Races	4.1%	4.6%	13.5%	5.5%
Hispanic Origin		16.0%	16.3%	28.6%	17.6%