

Village District Raleigh, North Carolina	1 Mile Radius	3 Mile Radius	5 Mile Radius	10 Minute Drive
---	---------------	---------------	---------------	-----------------

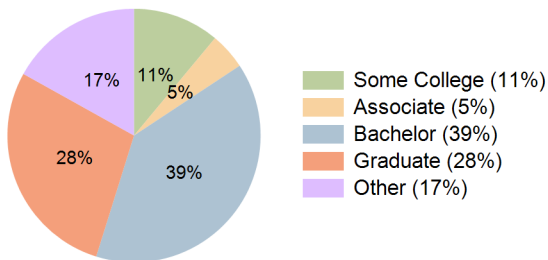
Current Year Demographics

Current Population	19,376	103,547	235,358	104,767
Total Daytime Pop	27,729	172,601	388,346	213,053
Daytime Workers	19,970	126,450	288,158	167,149
Average Household Income	\$128,300	\$136,781	\$119,526	\$137,227
Median Household Income	\$88,581	\$85,694	\$78,585	\$87,506
Total Households	9,476	43,608	102,237	46,376
Median Home Value	\$693,953	\$660,315	\$520,398	\$670,636
Bachelors Degree	41.4%	38.4%	35.2%	39.1%
Graduate Degree	34.7%	27.0%	22.3%	28.3%
Consumer Spending Index	113	121	106	121

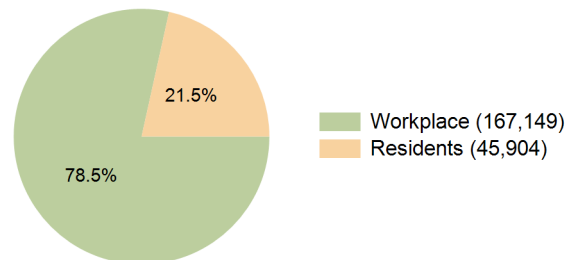
2029 Demographic Projections

Projected Population	20,605	117,863	260,066	120,720
Projected 5 Year Annual Growth Rate (Pop)	1.2%	2.6%	2.0%	2.9%
Projected Households	10,317	50,979	114,990	54,764
Projected 5 Year Annual Growth Rate (HH)	1.7%	3.2%	2.4%	3.4%

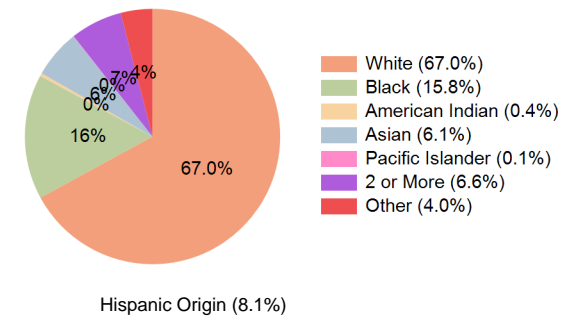
Education (10 Minute Drive)



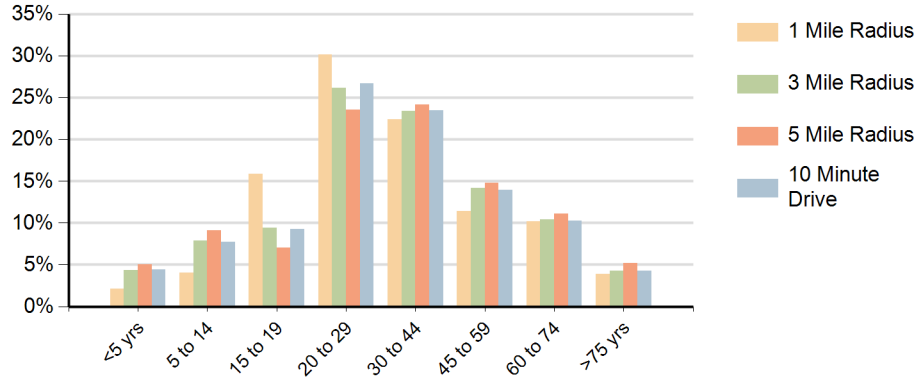
Daytime Population (10 Minute Drive)



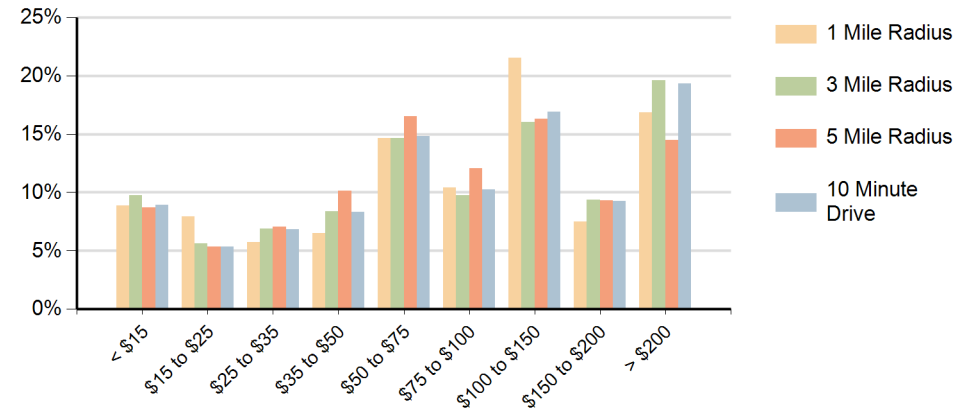
Race (10 Minute Drive)



Population by Age Range



Households by Income Range (\$000)



Village District Raleigh, North Carolina		1 Mile Radius	3 Mile Radius	5 Mile Radius	10 Minute Drive
Population	Current Estimated Population	19,376	103,547	235,358	104,767
	2020 Census Population	17,884	99,639	225,002	100,108
	2010 Census Population	14,780	90,079	197,259	86,349
	Historical Annual Growth 2010 to 2020	1.9%	1.0%	1.3%	1.5%
	Estimated Annual Growth 2020 to 2024	1.9%	0.9%	1.1%	1.1%
	Projected Annual Growth 2024 to 2029	1.2%	2.6%	2.0%	2.9%
Households	Current Estimated Households	9,476	43,608	102,237	46,376
	2020 Census Households	8,333	40,616	95,536	43,004
	2010 Census Households	6,323	33,483	78,600	33,517
	Historical Annual Growth 2010 to 2020	2.8%	2.0%	2.0%	2.5%
	Estimated Annual Growth 2020 to 2024	3.1%	1.7%	1.6%	1.8%
	Projected Annual Growth 2024 to 2029	1.7%	3.2%	2.4%	3.4%
Population per Household		1.7	2.0	2.1	2.0
Race	White	78.2%	65.5%	56.6%	67.0%
	Black or African American	7.5%	17.6%	22.9%	15.8%
	American Indian	0.4%	0.4%	0.5%	0.4%
	Asian	4.9%	6.2%	5.3%	6.1%
	Pacific Islander	0.0%	0.0%	0.1%	0.1%
	2 or More Races	7.3%	6.5%	7.0%	6.6%
	Other Races	1.8%	3.9%	7.8%	4.0%
	Hispanic Origin	5.8%	7.9%	12.6%	8.1%