

West Chester Plaza
West Chester, Ohio

1 Mile Radius

3 Mile Radius

5 Mile Radius

10 Minute Drive

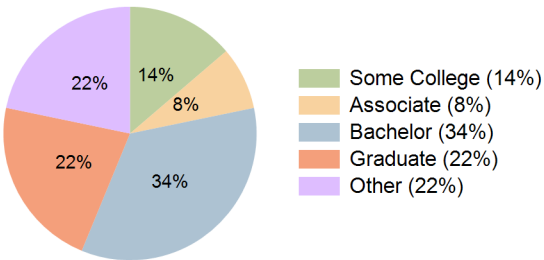
Current Year Demographics

Current Population	5,409	65,056	149,188	71,622
Total Daytime Pop	11,981	65,864	168,130	77,062
Daytime Workers	9,187	34,431	97,294	42,545
Average Household Income	\$123,180	\$159,381	\$166,978	\$155,594
Median Household Income	\$106,873	\$124,484	\$128,466	\$122,693
Total Households	2,046	24,074	55,193	26,474
Median Home Value	\$345,261	\$372,967	\$389,513	\$369,631
Bachelors Degree	25.5%	35.0%	36.7%	34.5%
Graduate Degree	20.2%	22.3%	24.5%	22.0%
Consumer Spending Index	105	135	141	132

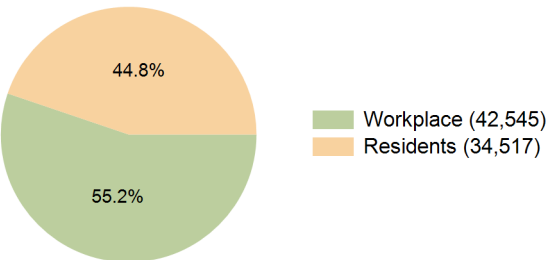
2030 Demographic Projections

Projected Population	5,390	66,641	153,209	73,358
Projected 5 Year Annual Growth Rate (Pop)	-0.1%	0.5%	0.5%	0.5%
Projected Households	2,050	24,850	57,149	27,362
Projected 5 Year Annual Growth Rate (HH)	0.0%	0.6%	0.7%	0.7%

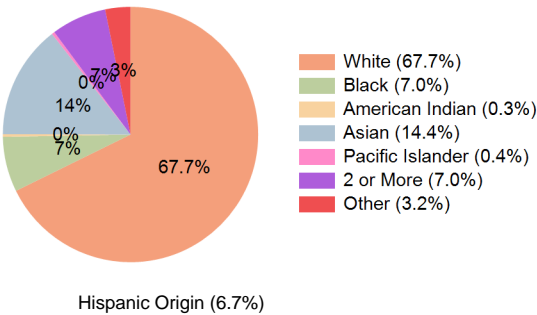
Education (10 Minute Drive)



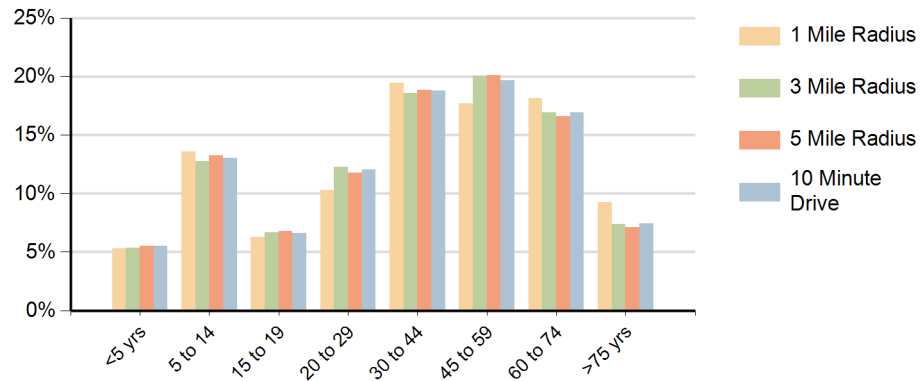
Daytime Population (10 Minute Drive)



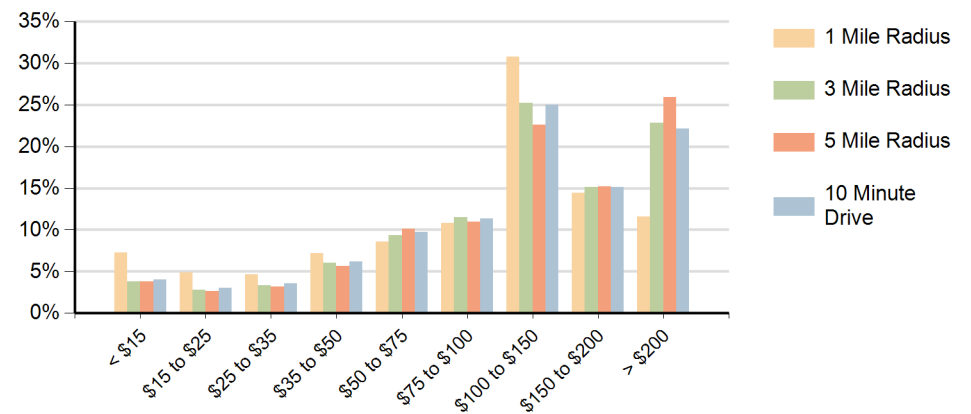
Race (10 Minute Drive)



Population by Age Range



Households by Income Range (\$000)



West Chester Plaza West Chester, Ohio		1 Mile Radius	3 Mile Radius	5 Mile Radius	10 Minute Drive
Population	Current Estimated Population	5,409	65,056	149,188	71,622
	2020 Census Population	5,347	62,147	143,894	68,604
	2010 Census Population	5,287	59,389	132,700	65,456
	Historical Annual Growth 2010 to 2020	0.1%	0.5%	0.8%	0.5%
	Estimated Annual Growth 2020 to 2025	0.2%	0.9%	0.7%	0.8%
	Projected Annual Growth 2025 to 2030	-0.1%	0.5%	0.5%	0.5%
Households	Current Estimated Households	2,046	24,074	55,193	26,474
	2020 Census Households	2,033	22,698	52,569	25,015
	2010 Census Households	1,966	20,769	47,216	22,933
	Historical Annual Growth 2010 to 2020	0.3%	0.9%	1.1%	0.9%
	Estimated Annual Growth 2020 to 2025	0.1%	1.1%	0.9%	1.1%
	Projected Annual Growth 2025 to 2030	0.0%	0.6%	0.7%	0.7%
Race	Population per Household	2.6	2.7	2.7	2.7
	White	73.6%	68.3%	67.8%	67.7%
	Black or African American	6.9%	6.2%	6.5%	7.0%
	American Indian	0.2%	0.3%	0.3%	0.3%
	Asian	9.5%	15.7%	15.6%	14.4%
	Pacific Islander	0.3%	0.4%	0.3%	0.4%
	2 or More Races	7.0%	6.7%	6.9%	7.0%
	Other Races	2.5%	2.5%	2.7%	3.2%
Hispanic Origin		5.0%	5.6%	6.0%	6.7%