

Lake Pine Plaza Apex, North Carolina	1 Mile Radius	3 Mile Radius	5 Mile Radius	10 Minute Drive
---	---------------	---------------	---------------	-----------------

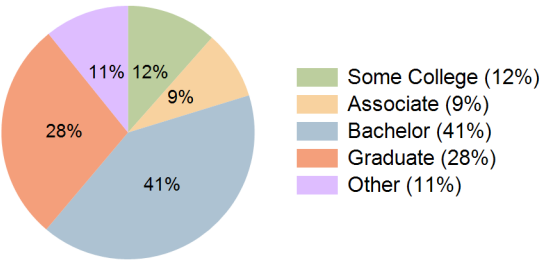
Current Year Demographics

Current Population	7,912	72,725	194,419	113,920
Total Daytime Pop	9,150	85,539	192,304	118,821
Daytime Workers	5,674	53,564	108,248	68,421
Average Household Income	\$164,972	\$161,224	\$162,597	\$160,360
Median Household Income	\$128,677	\$123,390	\$121,698	\$123,541
Total Households	3,097	28,886	75,344	44,748
Median Home Value	\$506,108	\$504,101	\$543,271	\$516,941
Bachelors Degree	39.3%	40.6%	40.9%	40.9%
Graduate Degree	30.1%	27.9%	28.7%	28.0%
Consumer Spending Index	143	140	142	140

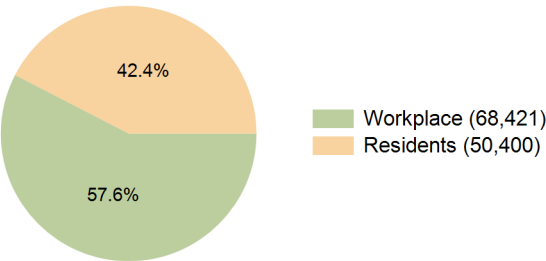
2029 Demographic Projections

Projected Population	8,037	73,310	202,797	118,520
Projected 5 Year Annual Growth Rate (Pop)	0.3%	0.2%	0.9%	0.8%
Projected Households	3,159	29,257	78,584	46,517
Projected 5 Year Annual Growth Rate (HH)	0.4%	0.3%	0.9%	0.8%

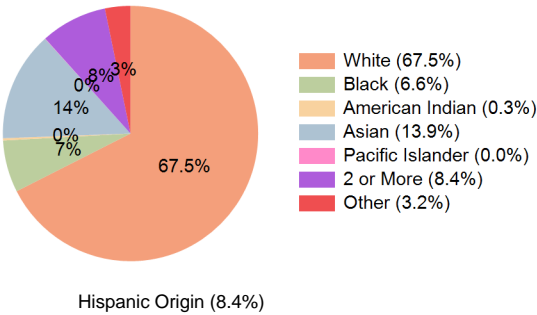
Education (10 Minute Drive)



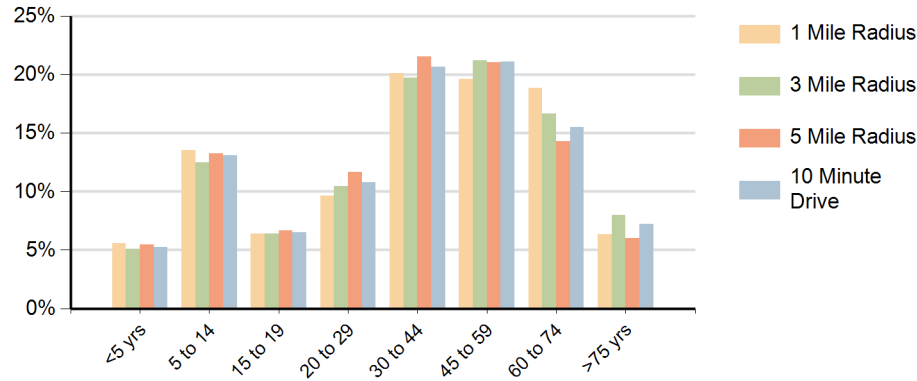
Daytime Population (10 Minute Drive)



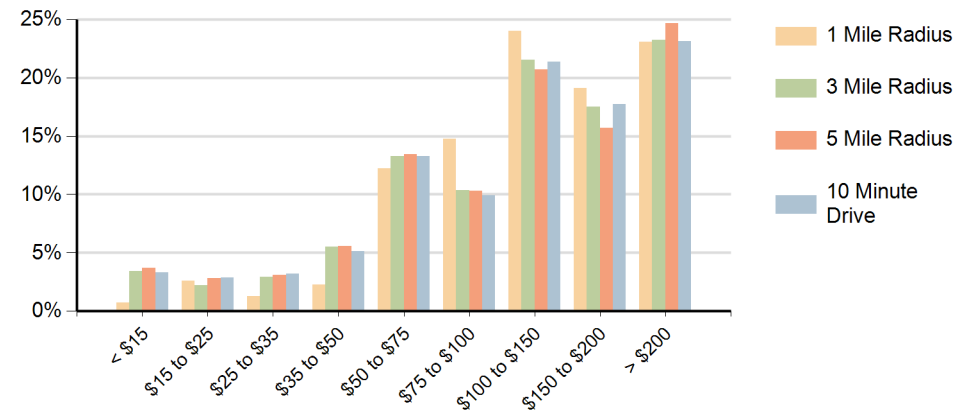
Race (10 Minute Drive)



### Population by Age Range



### Households by Income Range (\$000)



Lake Pine Plaza Apex, North Carolina		1 Mile Radius	3 Mile Radius	5 Mile Radius	10 Minute Drive
Population	Current Estimated Population	7,912	72,725	194,419	113,920
	2020 Census Population	7,446	70,834	187,934	110,308
	2010 Census Population	6,634	62,279	156,511	95,208
	Historical Annual Growth 2010 to 2020	1.2%	1.3%	1.9%	1.5%
	Estimated Annual Growth 2020 to 2024	1.4%	0.6%	0.8%	0.8%
	Projected Annual Growth 2024 to 2029	0.3%	0.2%	0.9%	0.8%
Households	Current Estimated Households	3,097	28,886	75,344	44,748
	2020 Census Households	2,861	27,799	72,260	42,904
	2010 Census Households	2,582	23,761	59,248	36,099
	Historical Annual Growth 2010 to 2020	1.0%	1.6%	2.0%	1.7%
	Estimated Annual Growth 2020 to 2024	1.9%	0.9%	1.0%	1.0%
	Projected Annual Growth 2024 to 2029	0.4%	0.3%	0.9%	0.8%
Race	Population per Household	2.6	2.5	2.6	2.5
	White	74.1%	69.1%	62.2%	67.5%
	Black or African American	3.9%	6.7%	7.6%	6.6%
	American Indian	0.6%	0.3%	0.4%	0.3%
	Asian	11.1%	12.0%	17.0%	13.9%
	Pacific Islander	0.0%	0.0%	0.0%	0.0%
	2 or More Races	8.5%	8.5%	8.5%	8.4%
	Other Races	1.9%	3.3%	4.3%	3.2%
Hispanic Origin		6.6%	8.6%	9.7%	8.4%