

Lloyd King Center Arvada,	1 Mile Radius	3 Mile Radius	5 Mile Radius	10 Minute Drive
------------------------------	---------------	---------------	---------------	-----------------

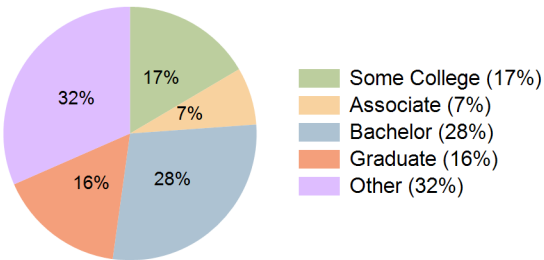
Current Year Demographics

Current Population	11,606	133,013	378,269	157,551
Total Daytime Pop	10,581	114,821	351,232	147,159
Daytime Workers	4,885	53,602	191,029	76,848
Average Household Income	\$125,479	\$119,759	\$129,934	\$120,357
Median Household Income	\$102,297	\$93,316	\$98,425	\$93,287
Total Households	4,405	53,909	161,865	65,766
Median Home Value	\$598,547	\$615,840	\$621,873	\$621,569
Bachelors Degree	24.0%	27.1%	30.9%	28.3%
Graduate Degree	15.3%	15.2%	16.9%	16.2%
Consumer Spending Index	106	103	111	103

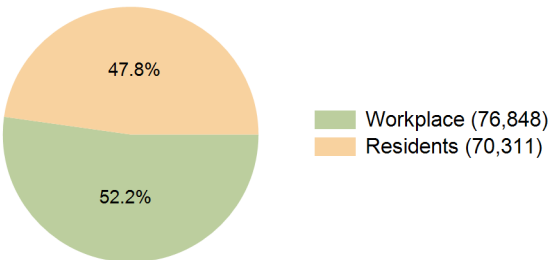
2030 Demographic Projections

Projected Population	11,586	133,673	390,463	158,747
Projected 5 Year Annual Growth Rate (Pop)	0.0%	0.1%	0.6%	0.2%
Projected Households	4,414	54,378	168,157	66,448
Projected 5 Year Annual Growth Rate (HH)	0.0%	0.2%	0.8%	0.2%

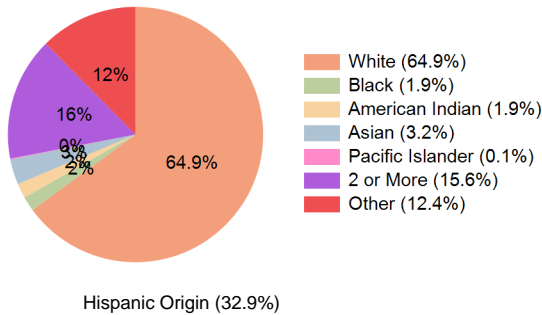
Education (10 Minute Drive)



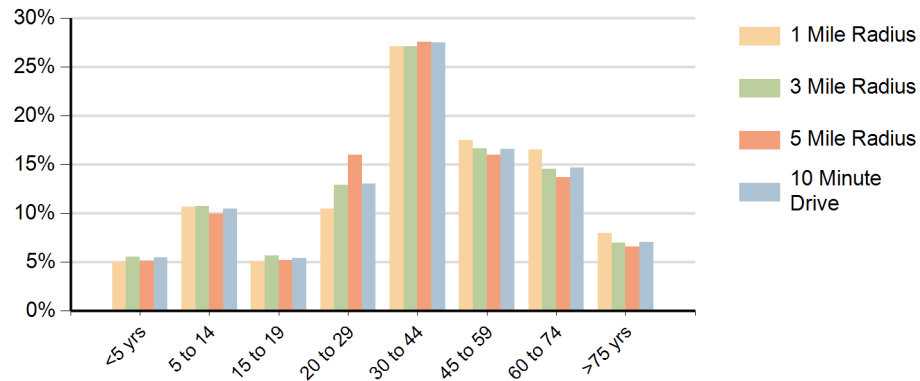
Daytime Population (10 Minute Drive)



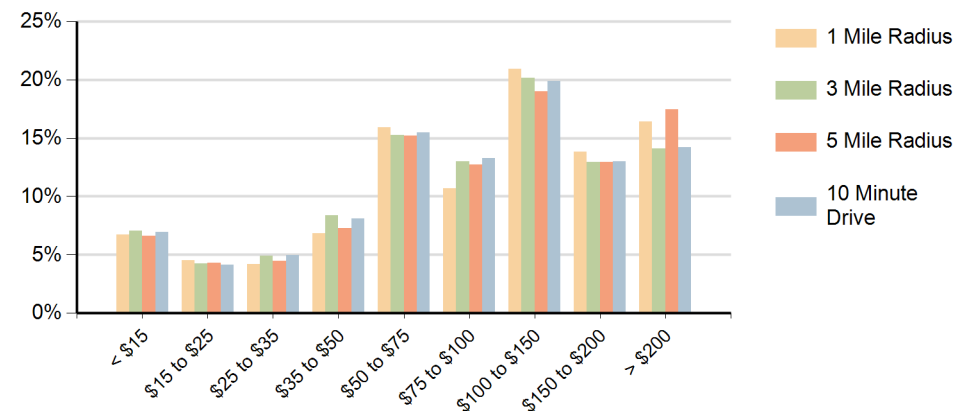
Race (10 Minute Drive)



Population by Age Range



Households by Income Range (\$000)



Lloyd King Center Arvada,		1 Mile Radius	3 Mile Radius	5 Mile Radius	10 Minute Drive
Population	Current Estimated Population	11,606	133,013	378,269	157,551
	2020 Census Population	11,759	134,160	366,491	156,500
	2010 Census Population	11,634	124,977	323,120	145,051
	Historical Annual Growth 2010 to 2020	0.1%	0.7%	1.3%	0.8%
	Estimated Annual Growth 2020 to 2025	-0.3%	-0.2%	0.6%	0.1%
	Projected Annual Growth 2025 to 2030	0.0%	0.1%	0.6%	0.2%
Households	Current Estimated Households	4,405	53,909	161,865	65,766
	2020 Census Households	4,436	53,740	154,421	64,519
	2010 Census Households	4,371	49,993	132,364	59,583
	Historical Annual Growth 2010 to 2020	0.2%	0.7%	1.6%	0.8%
	Estimated Annual Growth 2020 to 2025	-0.1%	0.1%	0.9%	0.4%
	Projected Annual Growth 2025 to 2030	0.0%	0.2%	0.8%	0.2%
Race	Population per Household	2.6	2.4	2.3	2.4
	White	64.6%	63.2%	65.3%	64.9%
	Black or African American	1.4%	1.7%	2.1%	1.9%
	American Indian	2.0%	1.9%	1.6%	1.9%
	Asian	6.7%	3.4%	3.2%	3.2%
	Pacific Islander	0.1%	0.1%	0.1%	0.1%
	2 or More Races	15.4%	16.2%	15.3%	15.6%
	Other Races	9.9%	13.5%	12.5%	12.4%
Hispanic Origin		30.1%	35.3%	32.2%	32.9%