

Welleby Plaza
Sunrise, Florida

1 Mile Radius

3 Mile Radius

5 Mile Radius

10 Minute Drive

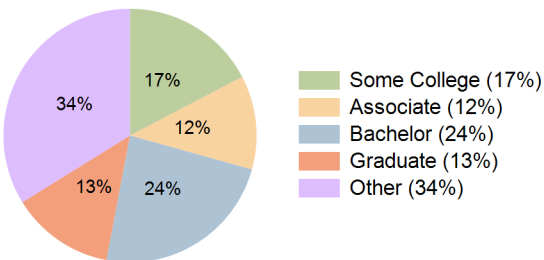
Current Year Demographics

Current Population	24,357	141,265	369,633	171,636
Total Daytime Pop	20,478	118,396	306,782	141,063
Daytime Workers	8,590	53,156	133,513	61,068
Average Household Income	\$81,576	\$97,540	\$97,511	\$98,074
Median Household Income	\$67,818	\$75,663	\$72,792	\$75,619
Total Households	10,018	58,370	146,544	71,458
Median Home Value	\$322,057	\$371,596	\$371,660	\$375,005
Bachelors Degree	19.3%	23.3%	21.7%	23.7%
Graduate Degree	10.7%	12.8%	12.1%	13.2%
Consumer Spending Index	71	84	85	85

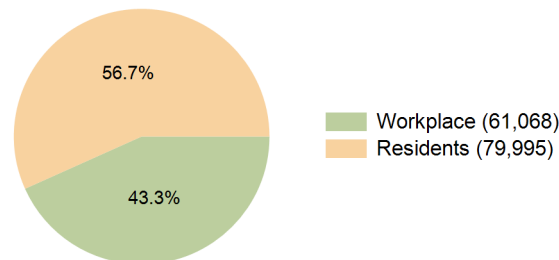
2030 Demographic Projections

Projected Population	24,218	142,384	371,050	174,384
Projected 5 Year Annual Growth Rate (Pop)	-0.1%	0.2%	0.1%	0.3%
Projected Households	10,022	59,304	148,350	73,149
Projected 5 Year Annual Growth Rate (HH)	0.0%	0.3%	0.3%	0.5%

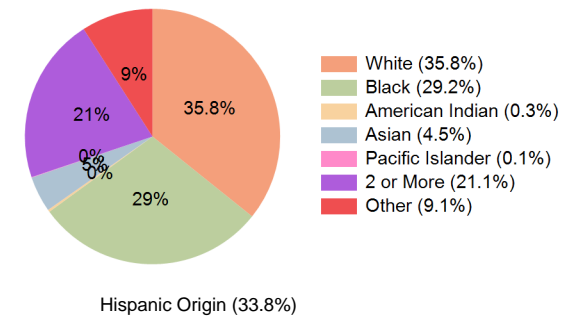
Education (10 Minute Drive)



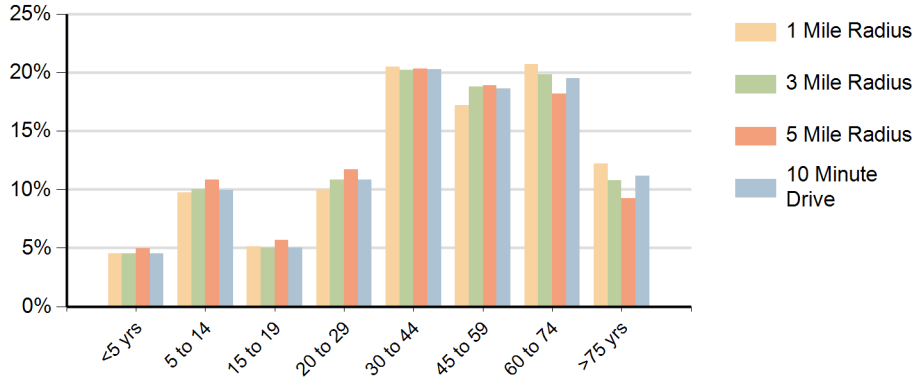
Daytime Population (10 Minute Drive)



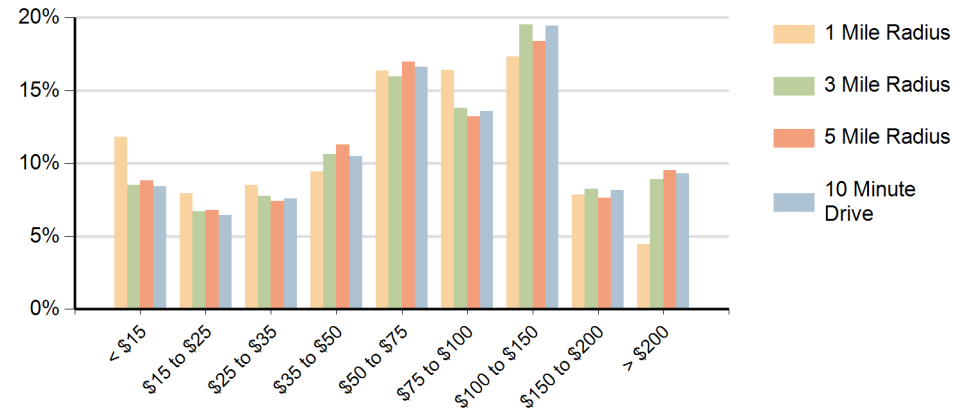
Race (10 Minute Drive)



Population by Age Range



Households by Income Range (\$000)



Welleby Plaza Sunrise, Florida		1 Mile Radius	3 Mile Radius	5 Mile Radius	10 Minute Drive
Population	Current Estimated Population	24,357	141,265	369,633	171,636
	2020 Census Population	24,238	137,670	361,584	166,727
	2010 Census Population	20,840	122,299	318,459	147,853
	Historical Annual Growth 2010 to 2020	1.5%	1.2%	1.3%	1.2%
	Estimated Annual Growth 2020 to 2025	0.1%	0.5%	0.4%	0.6%
	Projected Annual Growth 2025 to 2030	-0.1%	0.2%	0.1%	0.3%
Households	Current Estimated Households	10,018	58,370	146,544	71,458
	2020 Census Households	9,846	56,248	141,324	68,603
	2010 Census Households	8,726	51,061	127,680	62,196
	Historical Annual Growth 2010 to 2020	1.2%	1.0%	1.0%	1.0%
	Estimated Annual Growth 2020 to 2025	0.3%	0.7%	0.7%	0.8%
	Projected Annual Growth 2025 to 2030	0.0%	0.3%	0.3%	0.5%
Population per Household		2.4	2.4	2.5	2.4
Race	White	34.8%	34.6%	30.9%	35.8%
	Black or African American	25.8%	29.8%	38.1%	29.2%
	American Indian	0.2%	0.3%	0.3%	0.3%
	Asian	4.7%	4.6%	4.0%	4.5%
	Pacific Islander	0.1%	0.1%	0.1%	0.1%
	2 or More Races	23.9%	21.5%	18.5%	21.1%
	Other Races	10.7%	9.2%	8.2%	9.1%
	Hispanic Origin	39.6%	34.4%	29.4%	33.8%