

Marketplace at Briargate
Colorado Springs, Colorado

1 Mile Radius

3 Mile Radius

5 Mile Radius

10 Minute Drive

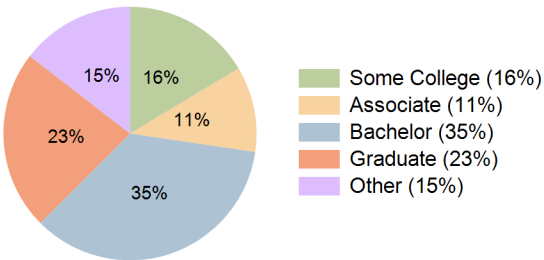
Current Year Demographics

Current Population	12,360	84,527	191,287	101,866
Total Daytime Pop	15,226	86,953	184,803	106,233
Daytime Workers	9,434	47,568	96,402	58,992
Average Household Income	\$174,306	\$149,230	\$140,089	\$143,113
Median Household Income	\$136,850	\$115,796	\$108,059	\$111,603
Total Households	4,122	30,315	71,642	37,769
Median Home Value	\$530,460	\$543,328	\$546,169	\$540,910
Bachelors Degree	33.9%	35.1%	32.8%	35.2%
Graduate Degree	28.8%	24.1%	20.5%	22.9%
Consumer Spending Index	151	130	123	125

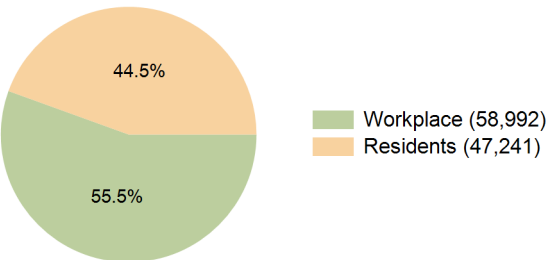
2029 Demographic Projections

Projected Population	13,073	92,614	212,353	111,232
Projected 5 Year Annual Growth Rate (Pop)	1.1%	1.8%	2.1%	1.8%
Projected Households	4,477	33,537	79,709	41,555
Projected 5 Year Annual Growth Rate (HH)	1.7%	2.0%	2.2%	1.9%

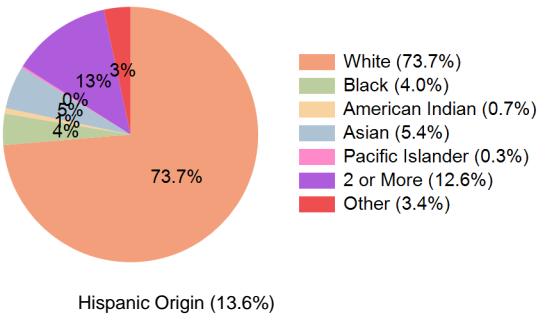
Education (10 Minute Drive)



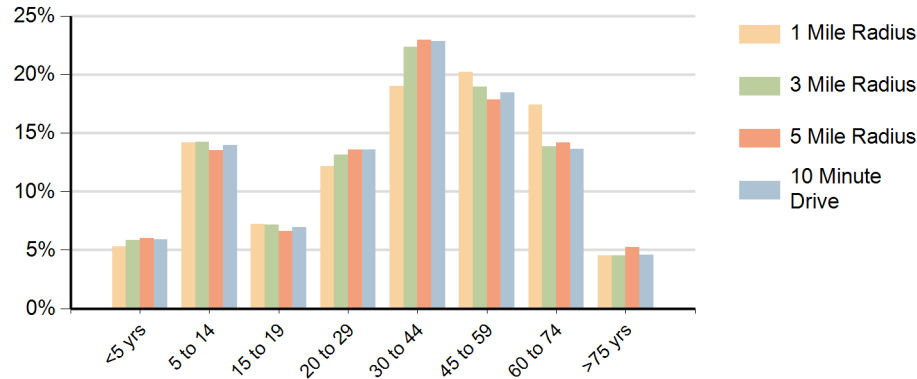
Daytime Population (10 Minute Drive)



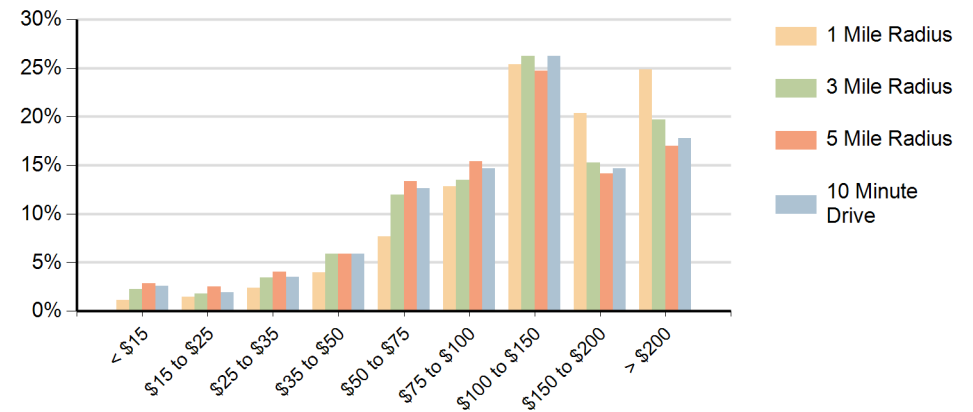
Race (10 Minute Drive)



Population by Age Range



Households by Income Range (\$000)



Marketplace at Briargate Colorado Springs, Colorado		1 Mile Radius	3 Mile Radius	5 Mile Radius	10 Minute Drive
Population	Current Estimated Population	12,360	84,527	191,287	101,866
	2020 Census Population	12,352	75,373	175,543	90,227
	2010 Census Population	12,141	61,204	138,401	72,440
	Historical Annual Growth 2010 to 2020	0.2%	2.1%	2.4%	2.2%
	Estimated Annual Growth 2020 to 2024	0.0%	2.7%	2.0%	2.9%
	Projected Annual Growth 2024 to 2029	1.1%	1.8%	2.1%	1.8%
Households	Current Estimated Households	4,122	30,315	71,642	37,769
	2020 Census Households	4,019	26,931	65,136	33,145
	2010 Census Households	3,725	21,502	51,090	26,036
	Historical Annual Growth 2010 to 2020	0.8%	2.3%	2.5%	2.4%
	Estimated Annual Growth 2020 to 2024	0.6%	2.8%	2.3%	3.1%
	Projected Annual Growth 2024 to 2029	1.7%	2.0%	2.2%	1.9%
Race	Population per Household	3.0	2.8	2.7	2.7
	White	76.8%	74.2%	73.0%	73.7%
	Black or African American	3.0%	3.8%	4.3%	4.0%
	American Indian	0.5%	0.7%	0.8%	0.7%
	Asian	5.7%	5.5%	4.9%	5.4%
	Pacific Islander	0.2%	0.2%	0.3%	0.3%
	2 or More Races	11.2%	12.4%	12.9%	12.6%
	Other Races	2.6%	3.2%	3.9%	3.4%
Hispanic Origin		10.3%	13.2%	14.6%	13.6%