

Clayton Valley Shopping Center
Concord, California

1 Mile Radius

3 Mile Radius

5 Mile Radius

10 Minute Drive

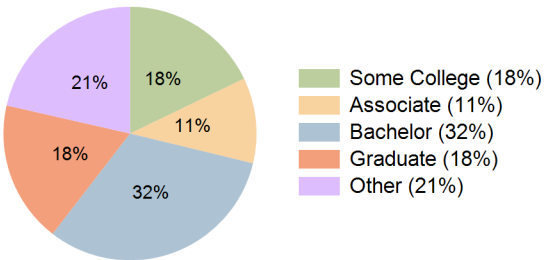
Current Year Demographics

Current Population	16,544	60,277	169,538	68,892
Total Daytime Pop	11,655	43,066	137,947	53,449
Daytime Workers	3,729	12,682	52,090	18,803
Average Household Income	\$164,546	\$182,701	\$168,456	\$185,244
Median Household Income	\$122,635	\$136,175	\$122,453	\$137,412
Total Households	6,225	22,292	60,519	25,578
Median Home Value	\$850,888	\$871,976	\$845,793	\$885,914
Bachelors Degree	27.6%	31.8%	30.0%	31.7%
Graduate Degree	15.3%	16.9%	16.3%	18.1%
Consumer Spending Index	141	156	145	158

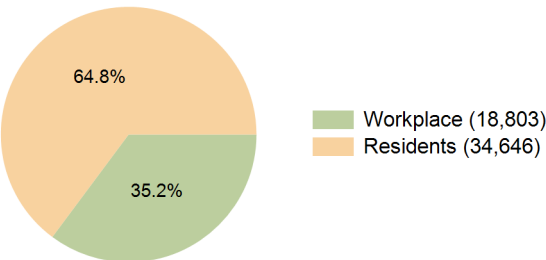
2029 Demographic Projections

Projected Population	16,496	60,013	170,160	68,641
Projected 5 Year Annual Growth Rate (Pop)	-0.1%	-0.1%	0.1%	-0.1%
Projected Households	6,178	22,063	60,321	25,321
Projected 5 Year Annual Growth Rate (HH)	-0.2%	-0.2%	-0.1%	-0.2%

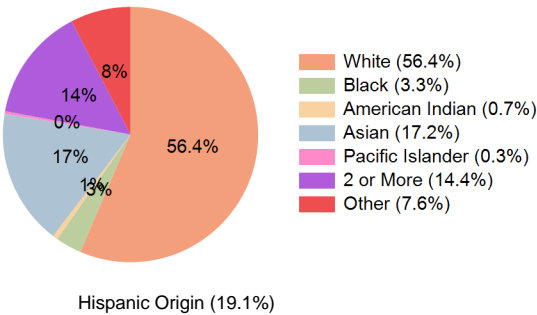
Education (10 Minute Drive)



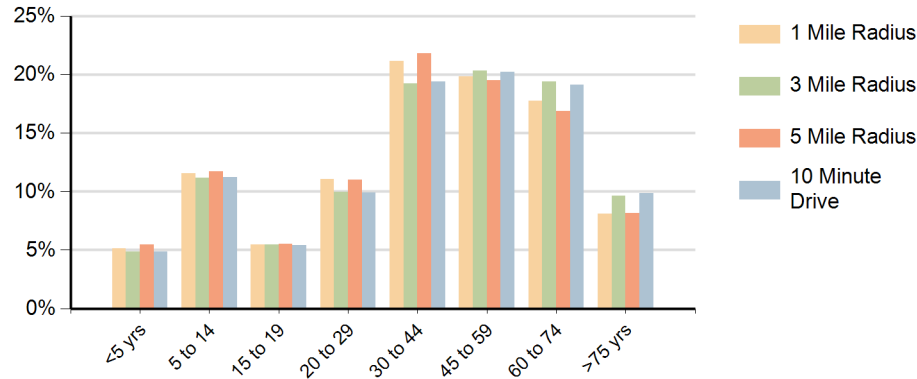
Daytime Population (10 Minute Drive)



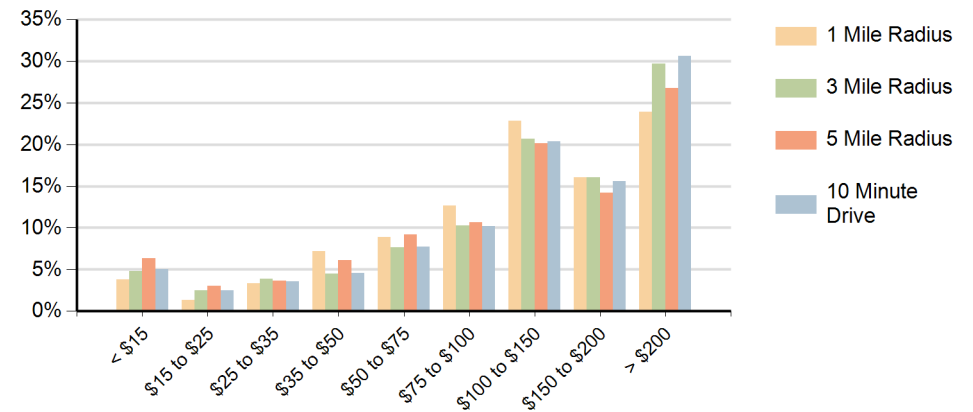
Race (10 Minute Drive)



Population by Age Range



Households by Income Range (\$000)



Clayton Valley Shopping Center Concord, California		1 Mile Radius	3 Mile Radius	5 Mile Radius	10 Minute Drive
Population	Current Estimated Population	16,544	60,277	169,538	68,892
	2020 Census Population	16,650	60,826	168,613	69,407
	2010 Census Population	15,831	58,862	158,488	67,252
	Historical Annual Growth 2010 to 2020	0.5%	0.3%	0.6%	0.3%
	Estimated Annual Growth 2020 to 2024	-0.2%	-0.2%	0.1%	-0.2%
	Projected Annual Growth 2024 to 2029	-0.1%	-0.1%	0.1%	-0.1%
Households	Current Estimated Households	6,225	22,292	60,519	25,578
	2020 Census Households	6,280	22,568	60,557	25,889
	2010 Census Households	6,074	21,983	57,304	25,225
	Historical Annual Growth 2010 to 2020	0.3%	0.3%	0.6%	0.3%
	Estimated Annual Growth 2020 to 2024	-0.2%	-0.3%	0.0%	-0.3%
	Projected Annual Growth 2024 to 2029	-0.2%	-0.2%	-0.1%	-0.2%
Race	Population per Household	2.7	2.7	2.8	2.7
	White	55.1%	56.8%	45.1%	56.4%
	Black or African American	3.4%	3.0%	4.6%	3.3%
	American Indian	0.7%	0.7%	1.0%	0.7%
	Asian	17.5%	17.1%	19.6%	17.2%
	Pacific Islander	0.5%	0.4%	0.6%	0.3%
	2 or More Races	15.0%	14.6%	14.4%	14.4%
	Other Races	7.8%	7.5%	14.7%	7.6%
Hispanic Origin		20.4%	19.2%	27.7%	19.1%