

Bellevue Square
Greenwood Village, Colorado

1 Mile Radius

3 Mile Radius

5 Mile Radius

10 Minute Drive

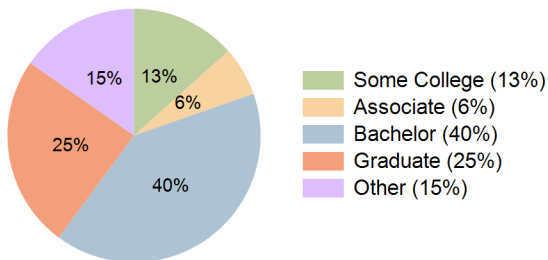
Current Year Demographics

Current Population	11,295	93,484	298,569	97,415
Total Daytime Pop	32,488	173,108	404,454	185,560
Daytime Workers	27,802	133,882	273,574	145,796
Average Household Income	\$170,581	\$157,701	\$144,925	\$145,483
Median Household Income	\$110,908	\$99,685	\$95,957	\$93,632
Total Households	5,366	41,133	128,988	44,086
Median Home Value	\$789,955	\$708,949	\$639,434	\$695,462
Bachelors Degree	45.7%	41.9%	36.9%	40.5%
Graduate Degree	29.8%	25.8%	22.7%	24.6%
Consumer Spending Index	149	138	127	128

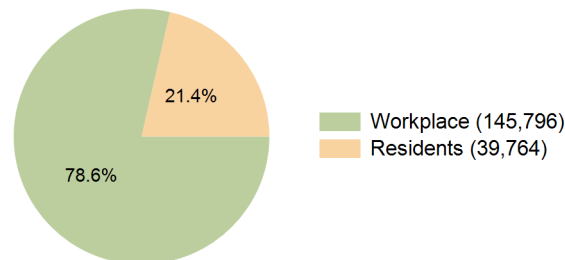
2029 Demographic Projections

Projected Population	11,591	93,647	301,401	98,414
Projected 5 Year Annual Growth Rate (Pop)	0.5%	0.0%	0.2%	0.2%
Projected Households	5,545	41,428	131,082	44,831
Projected 5 Year Annual Growth Rate (HH)	0.7%	0.1%	0.3%	0.3%

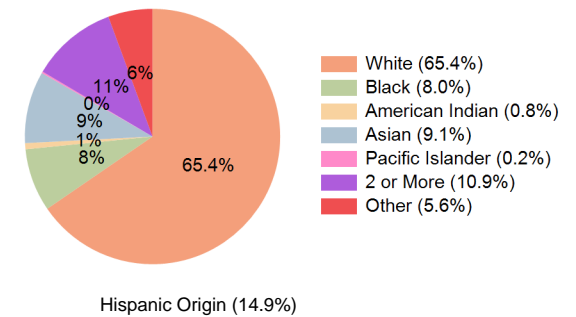
Education (10 Minute Drive)



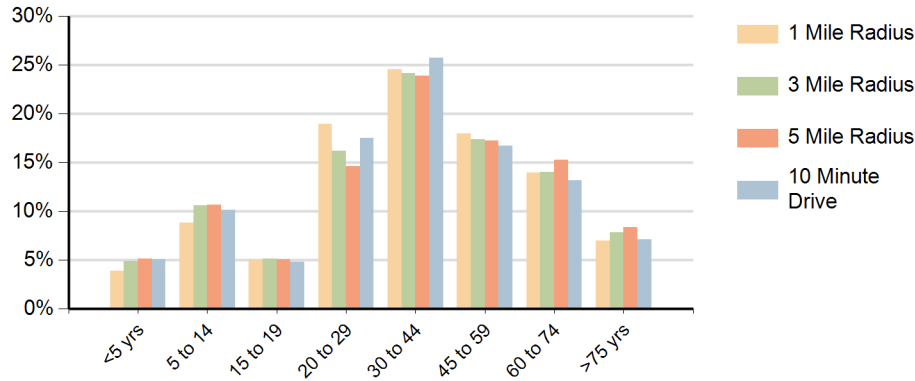
Daytime Population (10 Minute Drive)



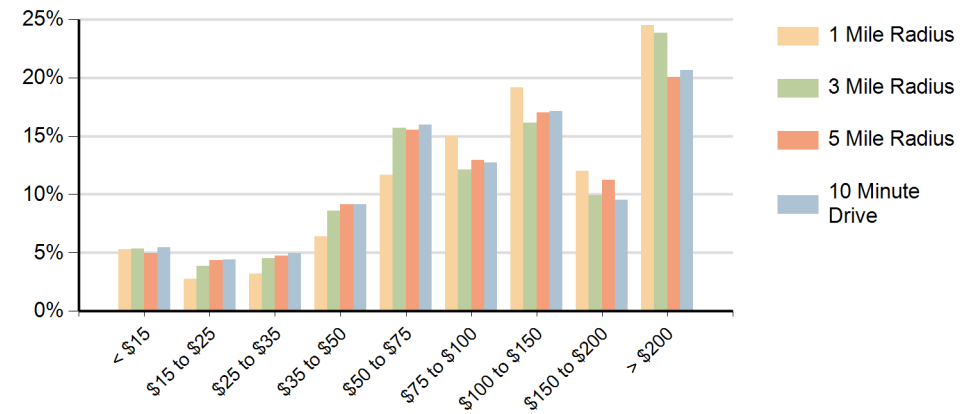
Race (10 Minute Drive)



Population by Age Range



Households by Income Range (\$000)



Belleview Square Greenwood Village, Colorado		1 Mile Radius	3 Mile Radius	5 Mile Radius	10 Minute Drive
Population	Current Estimated Population	11,295	93,484	298,569	97,415
	2020 Census Population	11,185	92,209	295,344	95,477
	2010 Census Population	8,795	80,211	261,538	80,556
	Historical Annual Growth 2010 to 2020	2.4%	1.4%	1.2%	1.7%
	Estimated Annual Growth 2020 to 2024	0.2%	0.3%	0.3%	0.5%
	Projected Annual Growth 2024 to 2029	0.5%	0.0%	0.2%	0.2%
Households	Current Estimated Households	5,366	41,133	128,988	44,086
	2020 Census Households	5,359	40,662	127,488	43,259
	2010 Census Households	4,328	36,467	115,861	37,317
	Historical Annual Growth 2010 to 2020	2.2%	1.1%	1.0%	1.5%
	Estimated Annual Growth 2020 to 2024	0.0%	0.3%	0.3%	0.5%
	Projected Annual Growth 2024 to 2029	0.7%	0.1%	0.3%	0.3%
Population per Household		2.1	2.3	2.3	2.2
Race	White	71.7%	68.3%	65.9%	65.4%
	Black or African American	4.9%	6.6%	9.6%	8.0%
	American Indian	0.6%	0.7%	0.8%	0.8%
	Asian	11.9%	8.8%	7.3%	9.1%
	Pacific Islander	0.2%	0.2%	0.2%	0.2%
	2 or More Races	7.9%	10.5%	11.0%	10.9%
	Other Races	2.9%	4.9%	5.3%	5.6%
	Hispanic Origin	9.2%	13.4%	14.7%	14.9%