

Westwood Village Magnolia, Texas	1 Mile Radius	3 Mile Radius	5 Mile Radius	10 Minute Drive
-------------------------------------	---------------	---------------	---------------	-----------------

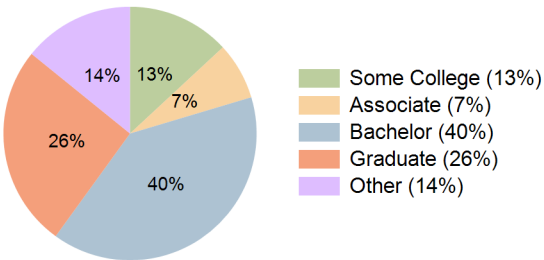
Current Year Demographics

Current Population	7,697	51,789	123,921	52,257
Total Daytime Pop	10,335	46,611	101,597	45,920
Daytime Workers	6,095	18,885	34,400	17,511
Average Household Income	\$166,968	\$189,476	\$182,205	\$174,234
Median Household Income	\$141,674	\$139,026	\$133,299	\$131,212
Total Households	2,672	18,660	44,086	18,814
Median Home Value	\$438,562	\$539,488	\$492,192	\$490,972
Bachelors Degree	39.4%	39.3%	38.8%	39.6%
Graduate Degree	25.8%	28.1%	24.8%	25.8%
Consumer Spending Index	140	159	153	147

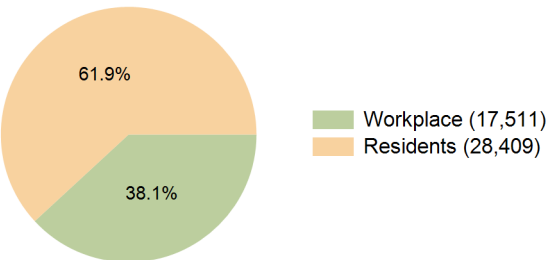
2030 Demographic Projections

Projected Population	8,368	55,560	135,061	56,049
Projected 5 Year Annual Growth Rate (Pop)	1.7%	1.4%	1.7%	1.4%
Projected Households	2,970	20,427	48,842	20,573
Projected 5 Year Annual Growth Rate (HH)	2.1%	1.8%	2.1%	1.8%

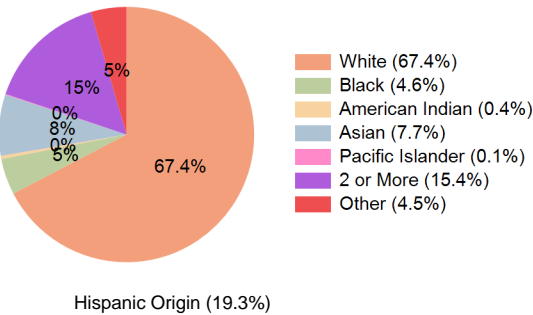
Education (10 Minute Drive)



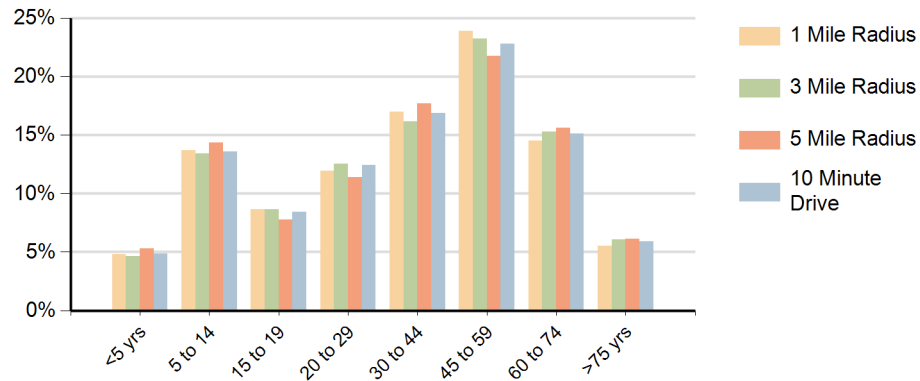
Daytime Population (10 Minute Drive)



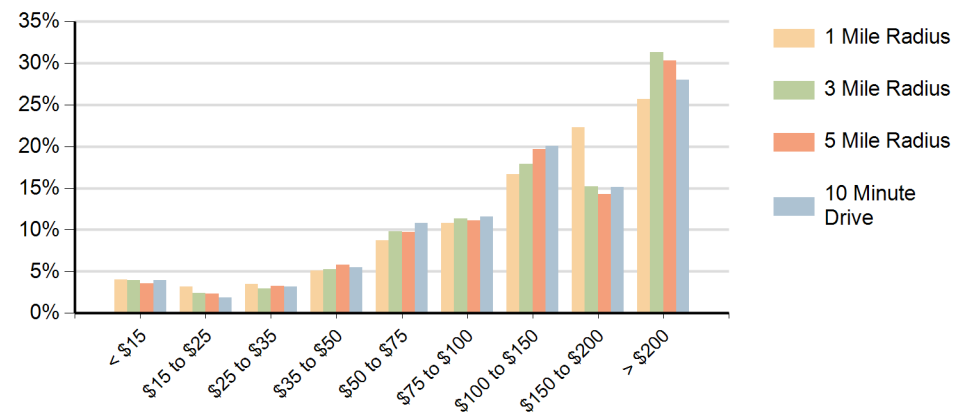
Race (10 Minute Drive)



Population by Age Range



Households by Income Range (\$000)



Westwood Village Magnolia, Texas		1 Mile Radius	3 Mile Radius	5 Mile Radius	10 Minute Drive
Population	Current Estimated Population	7,697	51,789	123,921	52,257
	2020 Census Population	7,757	49,674	108,888	50,200
	2010 Census Population	6,742	42,460	79,111	41,127
	Historical Annual Growth 2010 to 2020	1.4%	1.6%	3.3%	2.0%
	Estimated Annual Growth 2020 to 2025	-0.2%	0.8%	2.5%	0.8%
	Projected Annual Growth 2025 to 2030	1.7%	1.4%	1.7%	1.4%
Households	Current Estimated Households	2,672	18,660	44,086	18,814
	2020 Census Households	2,623	17,222	37,816	17,457
	2010 Census Households	2,174	14,028	26,669	13,747
	Historical Annual Growth 2010 to 2020	1.9%	2.1%	3.6%	2.4%
	Estimated Annual Growth 2020 to 2025	0.4%	1.5%	3.0%	1.4%
	Projected Annual Growth 2025 to 2030	2.1%	1.8%	2.1%	1.8%
Race	Population per Household	2.9	2.8	2.8	2.8
	White	69.4%	67.2%	67.6%	67.4%
	Black or African American	3.2%	4.3%	4.3%	4.6%
	American Indian	0.5%	0.4%	0.5%	0.4%
	Asian	7.3%	8.3%	7.1%	7.7%
	Pacific Islander	0.1%	0.1%	0.1%	0.1%
	2 or More Races	15.2%	15.5%	15.6%	15.4%
	Other Races	4.3%	4.3%	4.8%	4.5%
Hispanic Origin		19.5%	19.3%	20.2%	19.3%