

Twin City Plaza
Somerville, Massachusetts

1 Mile Radius

3 Mile Radius

5 Mile Radius

10 Minute Drive

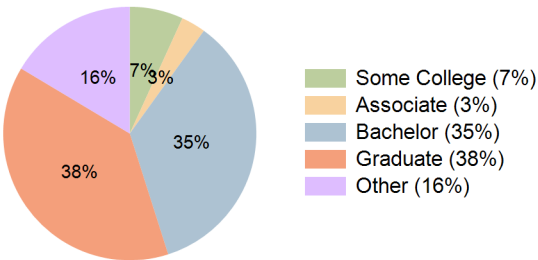
Current Year Demographics

Current Population	57,543	504,400	1,036,618	147,122
Total Daytime Pop	76,741	887,755	1,308,026	230,831
Daytime Workers	57,339	690,179	885,462	181,392
Average Household Income	\$168,770	\$163,234	\$152,775	\$176,687
Median Household Income	\$115,988	\$108,251	\$102,308	\$123,045
Total Households	26,252	216,796	432,989	67,569
Median Home Value	\$958,046	\$982,681	\$879,415	\$975,175
Bachelors Degree	32.8%	32.6%	29.8%	35.1%
Graduate Degree	36.6%	35.9%	31.0%	38.5%
Consumer Spending Index	147	143	134	154

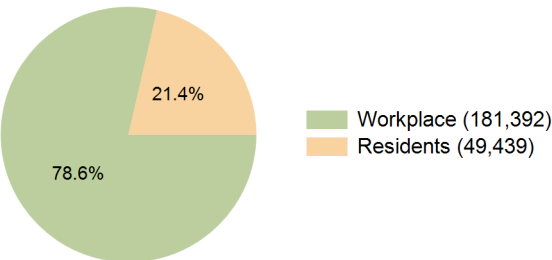
2029 Demographic Projections

Projected Population	60,803	524,373	1,067,907	151,644
Projected 5 Year Annual Growth Rate (Pop)	1.1%	0.8%	0.6%	0.6%
Projected Households	28,043	229,414	453,661	70,362
Projected 5 Year Annual Growth Rate (HH)	1.3%	1.1%	0.9%	0.8%

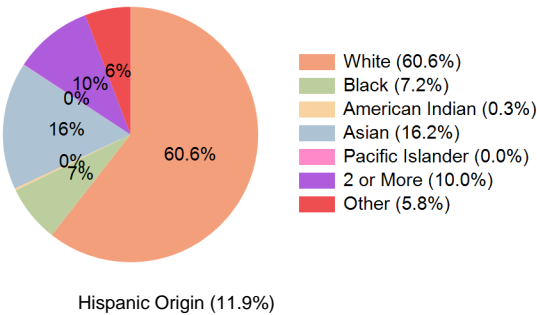
Education (10 Minute Drive)



Daytime Population (10 Minute Drive)

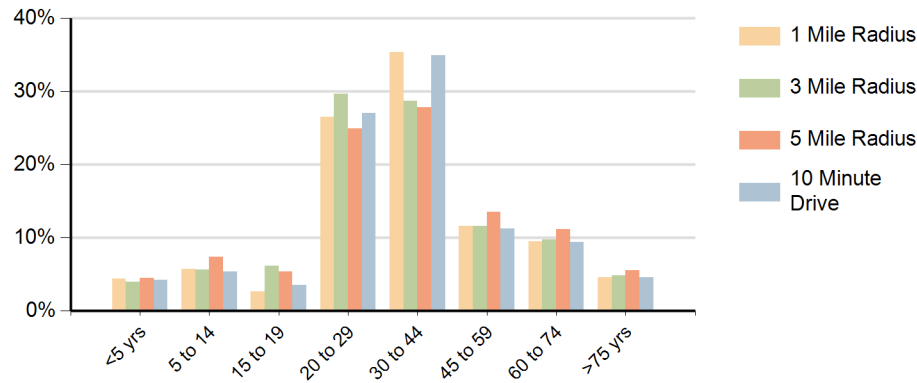


Race (10 Minute Drive)

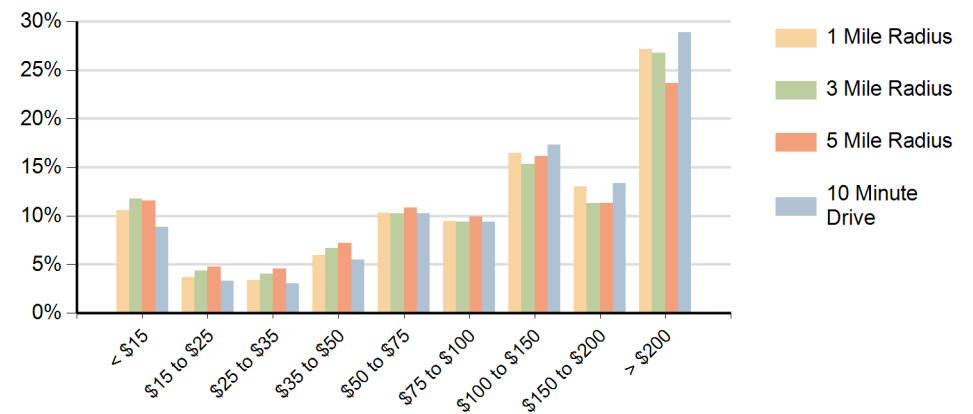


Hispanic Origin (11.9%)

Population by Age Range



Households by Income Range (\$000)



Twin City Plaza Somerville, Massachusetts		1 Mile Radius	3 Mile Radius	5 Mile Radius	10 Minute Drive
Population	Current Estimated Population	57,543	504,400	1,036,618	147,122
	2020 Census Population	55,153	498,887	1,036,550	144,113
	2010 Census Population	48,050	447,141	933,532	128,344
	Historical Annual Growth 2010 to 2020	1.4%	1.1%	1.1%	1.2%
	Estimated Annual Growth 2020 to 2024	1.0%	0.3%	0.0%	0.5%
	Projected Annual Growth 2024 to 2029	1.1%	0.8%	0.6%	0.6%
Households	Current Estimated Households	26,252	216,796	432,989	67,569
	2020 Census Households	24,924	212,409	428,637	65,520
	2010 Census Households	21,538	189,507	387,367	58,249
	Historical Annual Growth 2010 to 2020	1.5%	1.2%	1.0%	1.2%
	Estimated Annual Growth 2020 to 2024	1.2%	0.5%	0.2%	0.7%
	Projected Annual Growth 2024 to 2029	1.3%	1.1%	0.9%	0.8%
Race	Population per Household	2.1	2.1	2.2	2.1
	White	55.9%	56.3%	53.0%	60.6%
	Black or African American	8.8%	7.9%	10.6%	7.2%
	American Indian	0.3%	0.3%	0.4%	0.3%
	Asian	17.2%	16.5%	14.7%	16.2%
	Pacific Islander	0.0%	0.1%	0.1%	0.0%
	2 or More Races	10.9%	10.2%	10.9%	10.0%
	Other Races	6.9%	8.8%	10.3%	5.8%
Hispanic Origin		13.5%	16.1%	17.9%	11.9%