

Shops at Quail Creek
Broomfield, Colorado

1 Mile Radius

3 Mile Radius

5 Mile Radius

10 Minute Drive

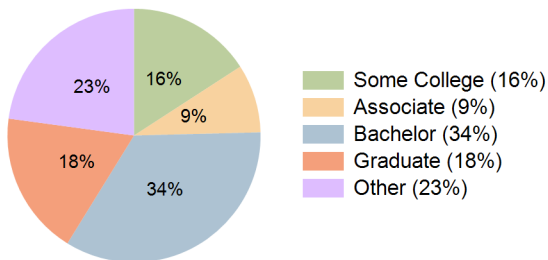
Current Year Demographics

Current Population	14,884	77,186	241,569	105,687
Total Daytime Pop	9,529	74,869	206,728	97,449
Daytime Workers	2,397	41,227	97,825	50,597
Average Household Income	\$164,478	\$160,024	\$149,340	\$163,433
Median Household Income	\$132,090	\$121,298	\$112,899	\$125,162
Total Households	5,004	29,540	90,654	40,017
Median Home Value	\$648,634	\$630,905	\$597,186	\$629,827
Bachelors Degree	33.5%	33.8%	31.3%	34.2%
Graduate Degree	19.6%	18.6%	16.5%	18.3%
Consumer Spending Index	142	140	131	143

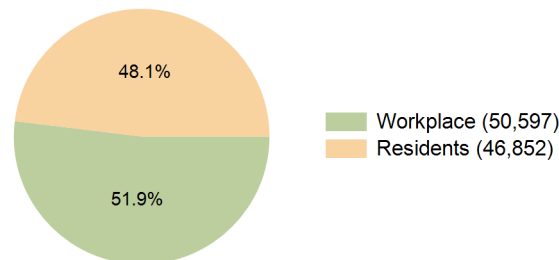
2029 Demographic Projections

Projected Population	14,938	79,479	246,055	107,900
Projected 5 Year Annual Growth Rate (Pop)	0.1%	0.6%	0.4%	0.4%
Projected Households	5,094	30,917	93,718	41,517
Projected 5 Year Annual Growth Rate (HH)	0.4%	0.9%	0.7%	0.7%

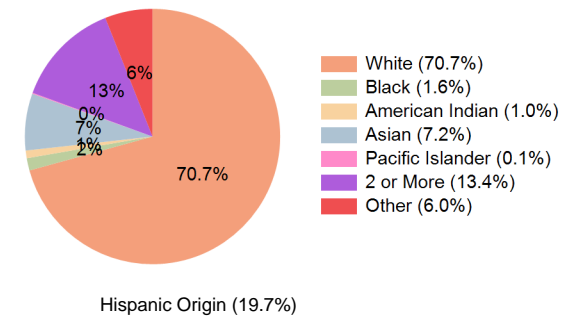
Education (10 Minute Drive)



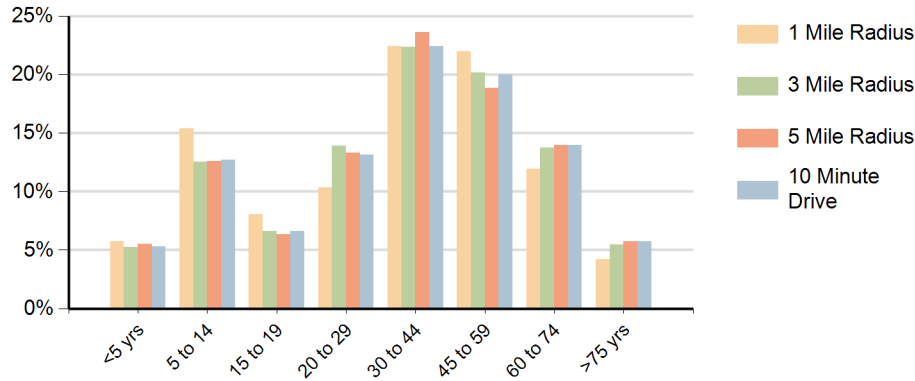
Daytime Population (10 Minute Drive)



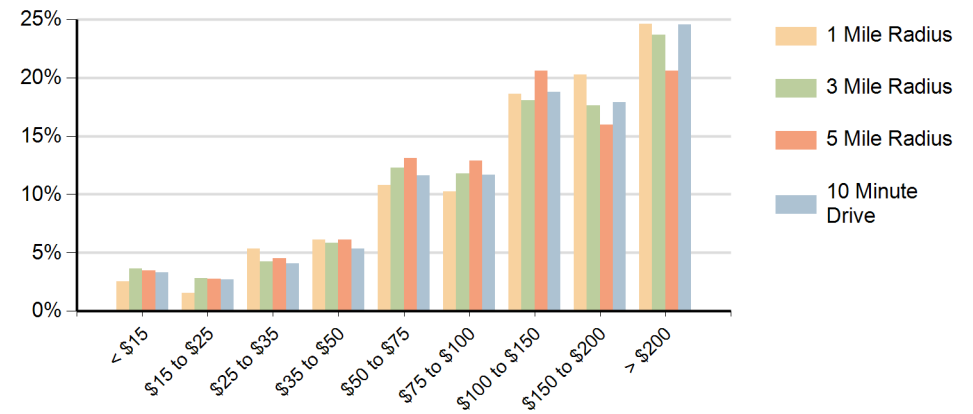
Race (10 Minute Drive)



Population by Age Range



Households by Income Range (\$000)



Shops at Quail Creek Broomfield, Colorado		1 Mile Radius	3 Mile Radius	5 Mile Radius	10 Minute Drive
Population	Current Estimated Population	14,884	77,186	241,569	105,687
	2020 Census Population	15,011	76,381	235,559	104,381
	2010 Census Population	12,851	66,031	199,570	91,026
	Historical Annual Growth 2010 to 2020	1.6%	1.5%	1.7%	1.4%
	Estimated Annual Growth 2020 to 2024	-0.2%	0.3%	0.6%	0.3%
	Projected Annual Growth 2024 to 2029	0.1%	0.6%	0.4%	0.4%
Households	Current Estimated Households	5,004	29,540	90,654	40,017
	2020 Census Households	5,004	28,810	87,824	39,092
	2010 Census Households	4,475	24,651	74,337	33,619
	Historical Annual Growth 2010 to 2020	1.1%	1.6%	1.7%	1.5%
	Estimated Annual Growth 2020 to 2024	0.0%	0.6%	0.8%	0.6%
	Projected Annual Growth 2024 to 2029	0.4%	0.9%	0.7%	0.7%
	Population per Household	3.0	2.6	2.7	2.6
Race	White	67.0%	70.7%	68.1%	70.7%
	Black or African American	1.2%	1.5%	1.7%	1.6%
	American Indian	0.9%	1.0%	1.2%	1.0%
	Asian	8.3%	7.1%	6.5%	7.2%
	Pacific Islander	0.1%	0.1%	0.1%	0.1%
	2 or More Races	14.6%	13.3%	14.5%	13.4%
	Other Races	7.9%	6.3%	7.9%	6.0%
	Hispanic Origin	22.5%	19.7%	24.6%	19.7%