

Sutton Square  
Raleigh, North Carolina

1 Mile Radius

3 Mile Radius

5 Mile Radius

10 Minute Drive

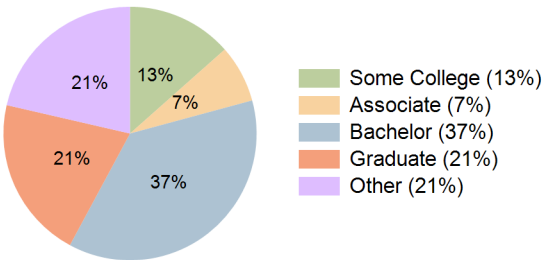
Current Year Demographics

Current Population	11,626	85,464	222,815	102,717
Total Daytime Pop	14,329	127,260	289,996	152,143
Daytime Workers	9,500	90,874	195,279	108,072
Average Household Income	\$111,001	\$120,302	\$132,569	\$121,006
Median Household Income	\$75,055	\$82,927	\$90,320	\$83,101
Total Households	5,553	39,015	97,915	46,906
Median Home Value	\$456,707	\$480,659	\$484,074	\$486,146
Bachelors Degree	40.8%	37.8%	38.5%	37.1%
Graduate Degree	19.3%	20.4%	21.3%	20.7%
Consumer Spending Index	99	107	117	107

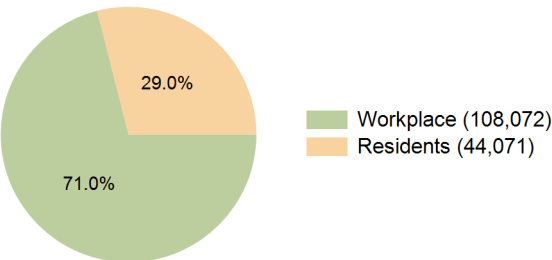
2029 Demographic Projections

Projected Population	12,000	88,880	233,029	107,384
Projected 5 Year Annual Growth Rate (Pop)	0.6%	0.8%	0.9%	0.9%
Projected Households	5,806	40,986	103,251	49,554
Projected 5 Year Annual Growth Rate (HH)	0.9%	1.0%	1.1%	1.1%

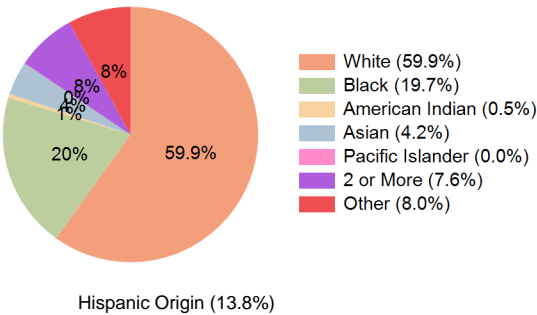
Education (10 Minute Drive)



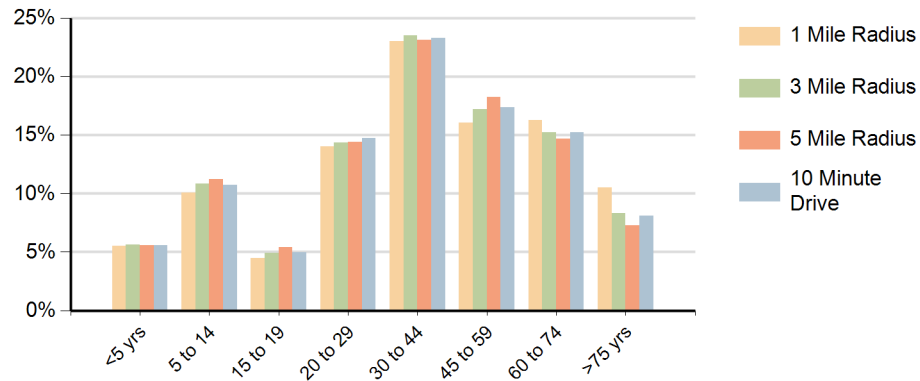
Daytime Population (10 Minute Drive)



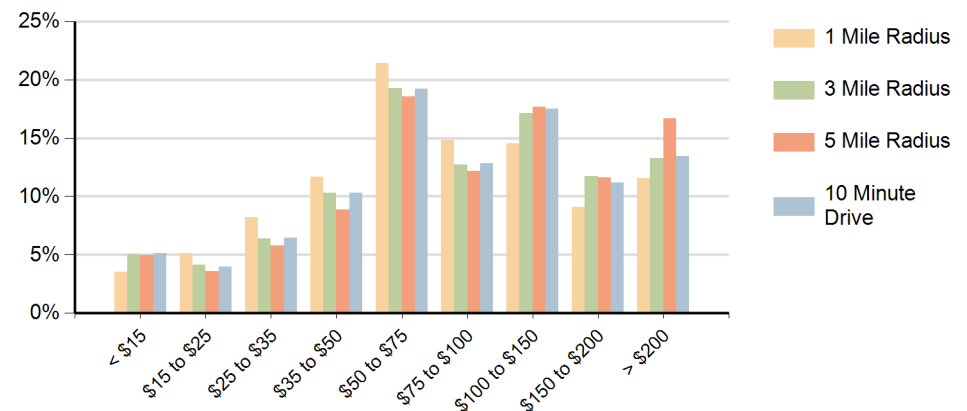
Race (10 Minute Drive)



### Population by Age Range



### Households by Income Range (\$000)



Sutton Square Raleigh, North Carolina		1 Mile Radius	3 Mile Radius	5 Mile Radius	10 Minute Drive
Population	Current Estimated Population	11,626	85,464	222,815	102,717
	2020 Census Population	11,560	82,889	215,480	99,231
	2010 Census Population	11,527	77,520	193,055	91,296
	Historical Annual Growth 2010 to 2020	0.0%	0.7%	1.1%	0.8%
	Estimated Annual Growth 2020 to 2024	0.1%	0.7%	0.8%	0.8%
	Projected Annual Growth 2024 to 2029	0.6%	0.8%	0.9%	0.9%
Households	Current Estimated Households	5,553	39,015	97,915	46,906
	2020 Census Households	5,466	37,397	93,419	44,646
	2010 Census Households	5,306	33,535	81,427	39,417
	Historical Annual Growth 2010 to 2020	0.3%	1.1%	1.4%	1.3%
	Estimated Annual Growth 2020 to 2024	0.4%	1.0%	1.1%	1.2%
	Projected Annual Growth 2024 to 2029	0.9%	1.0%	1.1%	1.1%
Race	Population per Household	2.1	2.2	2.3	2.2
	White	63.0%	61.4%	59.3%	59.9%
	Black or African American	19.9%	19.1%	19.9%	19.7%
	American Indian	0.4%	0.5%	0.6%	0.5%
	Asian	4.5%	3.9%	4.5%	4.2%
	Pacific Islander	0.0%	0.0%	0.1%	0.0%
	2 or More Races	7.6%	7.5%	7.7%	7.6%
	Other Races	4.5%	7.6%	7.9%	8.0%
Hispanic Origin		9.8%	13.2%	13.8%	13.8%