

Suncoast Crossing
Spring Hill, Florida

1 Mile Radius

3 Mile Radius

5 Mile Radius

10 Minute Drive

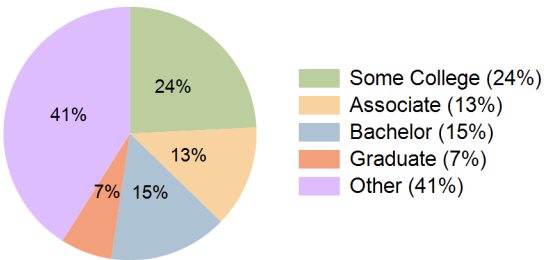
Current Year Demographics

Current Population	4,807	39,884	93,863	56,633
Total Daytime Pop	5,358	33,007	81,906	48,885
Daytime Workers	2,533	10,675	26,821	16,277
Average Household Income	\$101,002	\$96,589	\$90,526	\$93,133
Median Household Income	\$90,005	\$82,008	\$74,596	\$78,381
Total Households	2,054	14,610	36,866	21,539
Median Home Value	\$316,052	\$328,359	\$307,714	\$317,347
Bachelors Degree	13.7%	15.9%	14.9%	15.1%
Graduate Degree	6.0%	7.0%	7.0%	6.6%
Consumer Spending Index	89	86	81	83

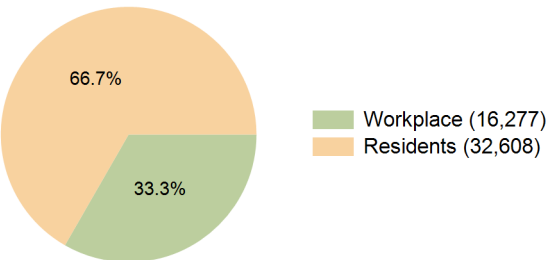
2029 Demographic Projections

Projected Population	5,018	42,462	100,302	60,168
Projected 5 Year Annual Growth Rate (Pop)	0.9%	1.3%	1.3%	1.2%
Projected Households	2,139	15,523	39,346	22,819
Projected 5 Year Annual Growth Rate (HH)	0.8%	1.2%	1.3%	1.2%

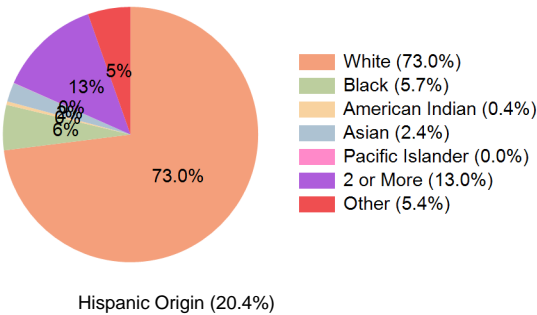
Education (10 Minute Drive)



Daytime Population (10 Minute Drive)

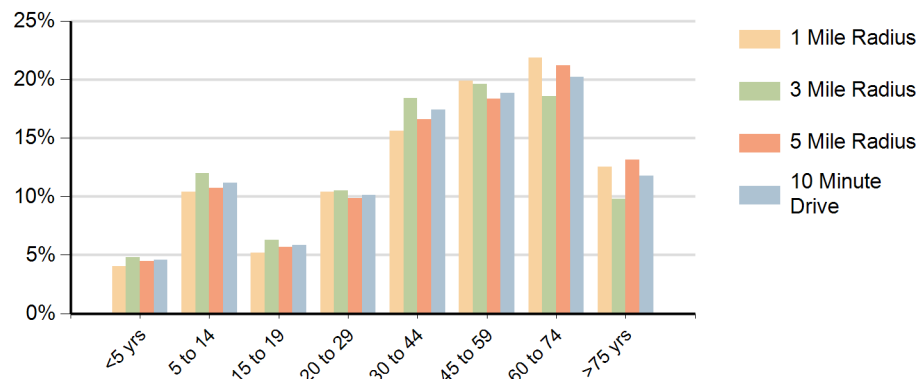


Race (10 Minute Drive)

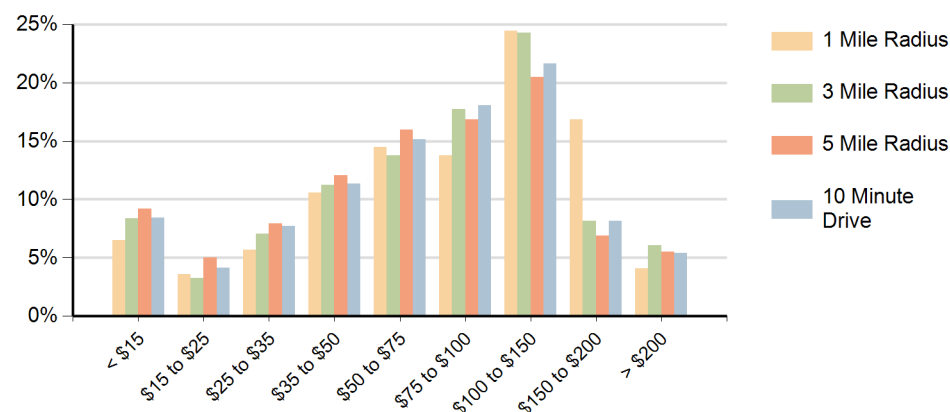


Hispanic Origin (20.4%)

Population by Age Range



Households by Income Range (\$000)



Suncoast Crossing Spring Hill, Florida		1 Mile Radius	3 Mile Radius	5 Mile Radius	10 Minute Drive
Population	Current Estimated Population	4,807	39,884	93,863	56,633
	2020 Census Population	4,648	37,117	86,826	52,091
	2010 Census Population	4,106	30,110	75,031	43,936
	Historical Annual Growth 2010 to 2020	1.3%	2.1%	1.5%	1.7%
	Estimated Annual Growth 2020 to 2024	0.8%	1.7%	1.9%	2.0%
	Projected Annual Growth 2024 to 2029	0.9%	1.3%	1.3%	1.2%
Households	Current Estimated Households	2,054	14,610	36,866	21,539
	2020 Census Households	1,983	13,590	34,099	19,823
	2010 Census Households	1,710	11,100	29,928	16,922
	Historical Annual Growth 2010 to 2020	1.5%	2.0%	1.3%	1.6%
	Estimated Annual Growth 2020 to 2024	0.8%	1.7%	1.9%	2.0%
	Projected Annual Growth 2024 to 2029	0.8%	1.2%	1.3%	1.2%
Race	Population per Household	2.3	2.7	2.5	2.6
	White	73.1%	71.4%	73.3%	73.0%
	Black or African American	6.1%	6.6%	5.7%	5.7%
	American Indian	0.3%	0.4%	0.4%	0.4%
	Asian	3.5%	2.8%	2.1%	2.4%
	Pacific Islander	0.0%	0.0%	0.0%	0.0%
	2 or More Races	12.6%	13.3%	12.9%	13.0%
	Other Races	4.4%	5.5%	5.6%	5.4%
Hispanic Origin		18.4%	20.7%	20.5%	20.4%