

Lorton Marketplace Lorton, Virginia	1 Mile Radius	3 Mile Radius	5 Mile Radius	10 Minute Drive
--	---------------	---------------	---------------	-----------------

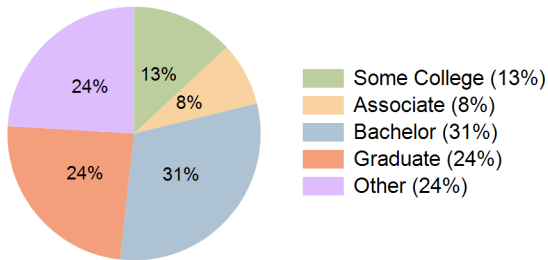
Current Year Demographics

Current Population	17,963	59,146	169,288	60,582
Total Daytime Pop	11,741	49,234	143,263	52,405
Daytime Workers	4,039	23,967	66,426	27,078
Average Household Income	\$156,879	\$180,439	\$175,795	\$171,471
Median Household Income	\$128,533	\$139,712	\$129,462	\$131,914
Total Households	5,973	20,624	57,678	20,558
Median Home Value	\$620,414	\$667,918	\$655,712	\$658,732
Bachelors Degree	33.9%	32.1%	29.3%	30.6%
Graduate Degree	24.3%	26.5%	26.1%	24.2%
Consumer Spending Index	136	156	152	148

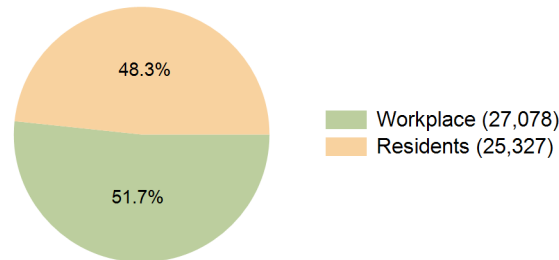
2029 Demographic Projections

Projected Population	18,315	59,793	170,897	61,493
Projected 5 Year Annual Growth Rate (Pop)	0.4%	0.2%	0.2%	0.3%
Projected Households	6,063	20,821	58,204	20,848
Projected 5 Year Annual Growth Rate (HH)	0.3%	0.2%	0.2%	0.3%

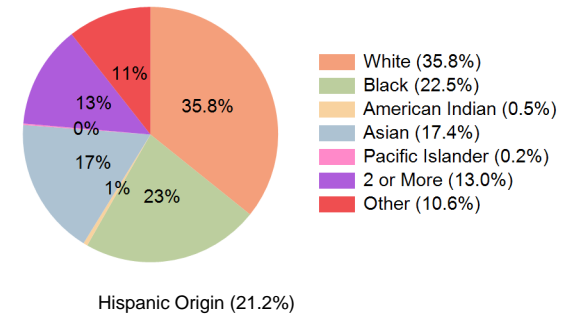
Education (10 Minute Drive)



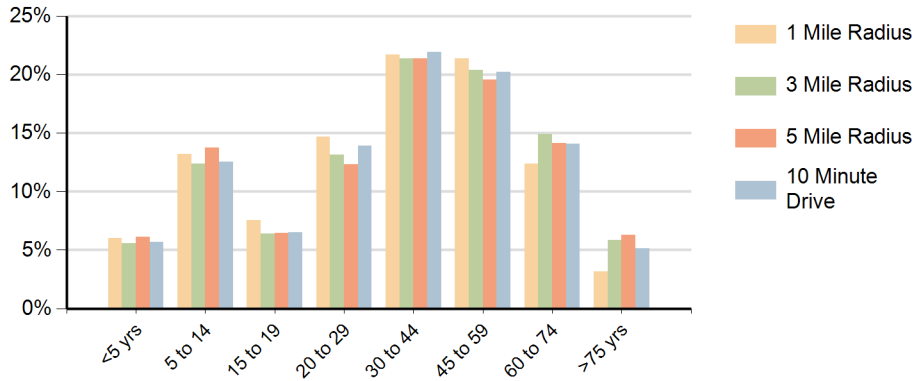
Daytime Population (10 Minute Drive)



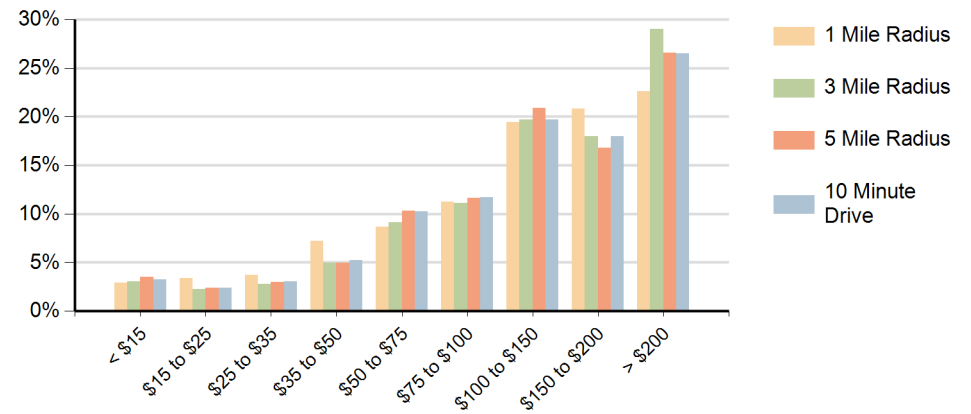
Race (10 Minute Drive)



Population by Age Range



Households by Income Range (\$000)



Lorton Marketplace Lorton, Virginia		1 Mile Radius	3 Mile Radius	5 Mile Radius	10 Minute Drive
Population	Current Estimated Population	17,963	59,146	169,288	60,582
	2020 Census Population	17,735	58,293	168,726	59,218
	2010 Census Population	15,817	53,493	156,277	53,990
	Historical Annual Growth 2010 to 2020	1.2%	0.9%	0.8%	0.9%
	Estimated Annual Growth 2020 to 2024	0.3%	0.3%	0.1%	0.5%
	Projected Annual Growth 2024 to 2029	0.4%	0.2%	0.2%	0.3%
Households	Current Estimated Households	5,973	20,624	57,678	20,558
	2020 Census Households	5,922	20,578	57,678	20,407
	2010 Census Households	5,387	18,808	54,372	18,545
	Historical Annual Growth 2010 to 2020	1.0%	0.9%	0.6%	1.0%
	Estimated Annual Growth 2020 to 2024	0.2%	0.1%	0.0%	0.2%
	Projected Annual Growth 2024 to 2029	0.3%	0.2%	0.2%	0.3%
	Population per Household	3.0	2.9	2.9	2.9
Race	White	24.0%	39.0%	42.0%	35.8%
	Black or African American	33.8%	22.1%	17.9%	22.5%
	American Indian	0.4%	0.5%	0.6%	0.5%
	Asian	21.3%	18.3%	14.7%	17.4%
	Pacific Islander	0.2%	0.2%	0.2%	0.2%
	2 or More Races	11.8%	12.6%	13.4%	13.0%
	Other Races	8.5%	7.5%	11.3%	10.6%
	Hispanic Origin	17.5%	16.8%	22.3%	21.2%