

Shoppes at Coronado
New Smyrna Beach, Florida

1 Mile Radius

3 Mile Radius

5 Mile Radius

10 Minute Drive

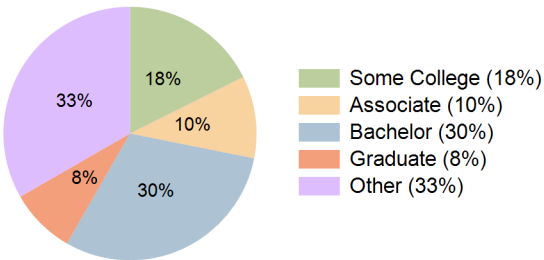
Current Year Demographics

| | | | | |
|--------------------------|-----------|-----------|-----------|-----------|
| Current Population | 2,081 | 16,373 | 44,155 | 16,624 |
| Total Daytime Pop | 1,195 | 12,497 | 38,138 | 14,211 |
| Daytime Workers | 206 | 3,672 | 14,002 | 5,522 |
| Average Household Income | \$98,692 | \$118,735 | \$106,890 | \$112,737 |
| Median Household Income | \$85,298 | \$92,274 | \$81,875 | \$87,108 |
| Total Households | 881 | 7,721 | 19,674 | 7,594 |
| Median Home Value | \$335,377 | \$423,970 | \$412,197 | \$422,332 |
| Bachelors Degree | 38.7% | 30.8% | 25.8% | 30.2% |
| Graduate Degree | 4.5% | 9.3% | 10.4% | 8.4% |
| Consumer Spending Index | 87 | 105 | 95 | 100 |

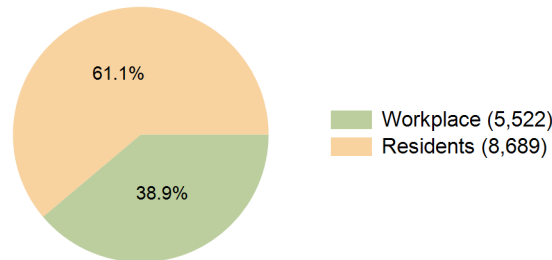
2029 Demographic Projections

| | | | | |
|---|-------|--------|--------|--------|
| Projected Population | 2,338 | 17,615 | 48,182 | 17,709 |
| Projected 5 Year Annual Growth Rate (Pop) | 2.4% | 1.5% | 1.8% | 1.3% |
| Projected Households | 1,009 | 8,446 | 21,705 | 8,235 |
| Projected 5 Year Annual Growth Rate (HH) | 2.8% | 1.8% | 2.0% | 1.6% |

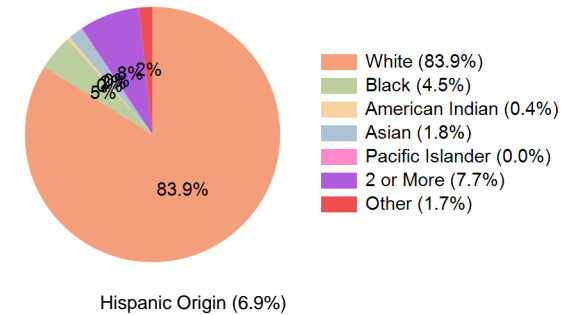
Education (10 Minute Drive)



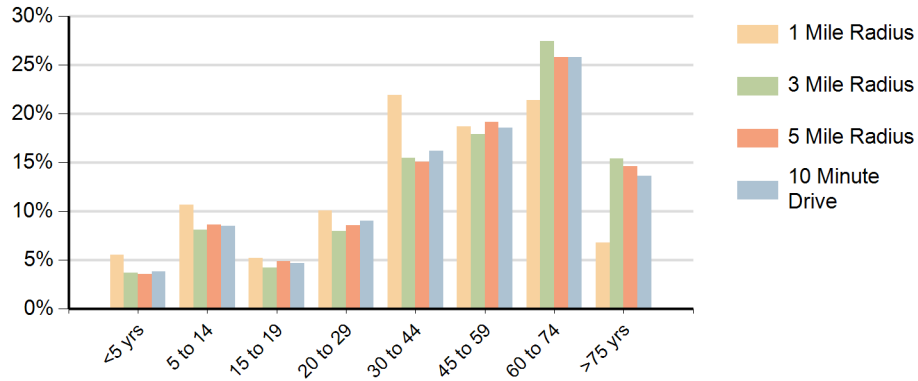
Daytime Population (10 Minute Drive)



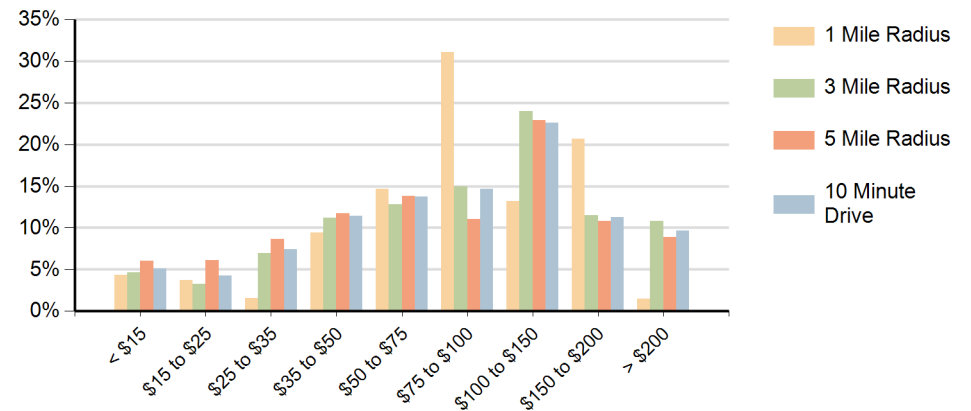
Race (10 Minute Drive)



Population by Age Range



Households by Income Range (\$000)



| Shoppes at Coronado New Smyrna Beach, Florida | | 1 Mile Radius | 3 Mile Radius | 5 Mile Radius | 10 Minute Drive |
|--|---------------------------------------|---------------|---------------|---------------|-----------------|
| Population | Current Estimated Population | 2,081 | 16,373 | 44,155 | 16,624 |
| | 2020 Census Population | 1,052 | 13,426 | 40,221 | 13,661 |
| | 2010 Census Population | 452 | 8,650 | 32,250 | 8,660 |
| | Historical Annual Growth 2010 to 2020 | 8.8% | 4.5% | 2.2% | 4.7% |
| | Estimated Annual Growth 2020 to 2024 | 17.4% | 4.8% | 2.2% | 4.7% |
| | Projected Annual Growth 2024 to 2029 | 2.4% | 1.5% | 1.8% | 1.3% |
| Households | Current Estimated Households | 881 | 7,721 | 19,674 | 7,594 |
| | 2020 Census Households | 446 | 6,227 | 17,711 | 6,109 |
| | 2010 Census Households | 190 | 3,922 | 14,267 | 3,766 |
| | Historical Annual Growth 2010 to 2020 | 8.9% | 4.7% | 2.2% | 5.0% |
| | Estimated Annual Growth 2020 to 2024 | 17.4% | 5.2% | 2.5% | 5.3% |
| | Projected Annual Growth 2024 to 2029 | 2.8% | 1.8% | 2.0% | 1.6% |
| | Population per Household | 2.4 | 2.1 | 2.2 | 2.2 |
| Race | White | 86.0% | 87.6% | 84.0% | 83.9% |
| | Black or African American | 1.6% | 1.6% | 4.7% | 4.5% |
| | American Indian | 0.3% | 0.3% | 0.3% | 0.4% |
| | Asian | 1.4% | 1.8% | 2.1% | 1.8% |
| | Pacific Islander | 0.1% | 0.0% | 0.1% | 0.0% |
| | 2 or More Races | 8.8% | 7.1% | 7.3% | 7.7% |
| | Other Races | 1.9% | 1.4% | 1.6% | 1.7% |
| | Hispanic Origin | 9.3% | 6.3% | 6.6% | 6.9% |