

**Hibernia Pavilion**  
Fleming Island, Florida

**1 Mile Radius**

**3 Mile Radius**

**5 Mile Radius**

**10 Minute Drive**

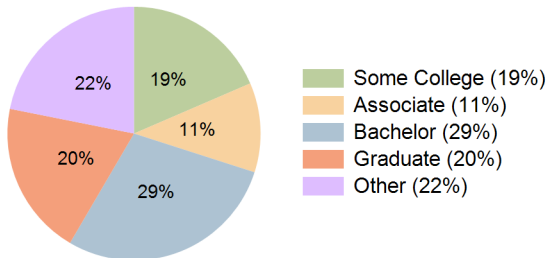
### Current Year Demographics

Current Population	8,138	22,929	62,903	21,727
Total Daytime Pop	5,738	20,716	50,339	23,353
Daytime Workers	1,632	8,912	19,293	12,625
Average Household Income	\$127,243	\$136,154	\$138,094	\$131,854
Median Household Income	\$101,637	\$107,254	\$110,889	\$104,145
Total Households	3,274	8,663	22,958	8,370
Median Home Value	\$394,017	\$409,554	\$415,071	\$394,605
Bachelors Degree	29.6%	28.5%	28.9%	28.5%
Graduate Degree	22.5%	21.7%	16.9%	19.7%
Consumer Spending Index	111	118	120	115

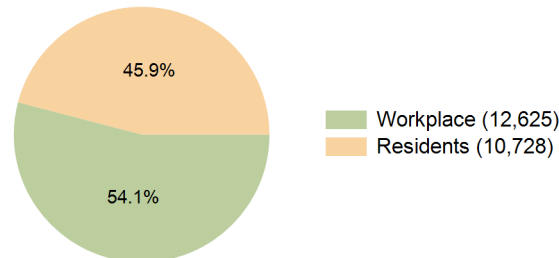
### 2029 Demographic Projections

Projected Population	8,523	23,824	67,656	22,422
Projected 5 Year Annual Growth Rate (Pop)	0.9%	0.8%	1.5%	0.6%
Projected Households	3,523	9,210	25,064	8,852
Projected 5 Year Annual Growth Rate (HH)	1.5%	1.2%	1.8%	1.1%

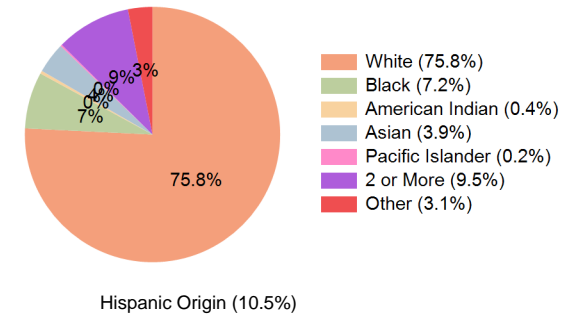
**Education (10 Minute Drive)**



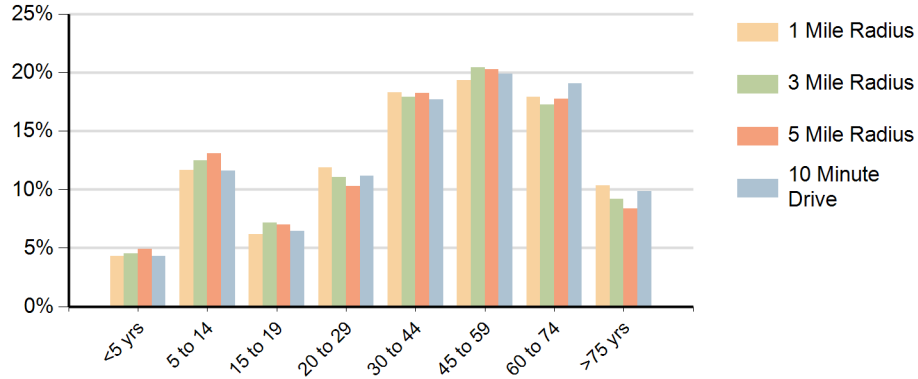
**Daytime Population (10 Minute Drive)**



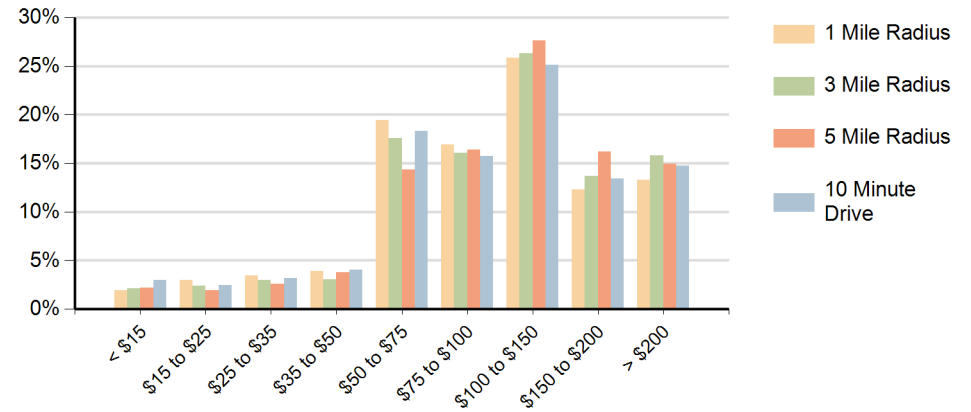
**Race (10 Minute Drive)**



## Population by Age Range



## Households by Income Range (\$000)



Hibernia Pavilion Fleming Island, Florida		1 Mile Radius	3 Mile Radius	5 Mile Radius	10 Minute Drive
Population	Current Estimated Population	8,138	22,929	62,903	21,727
	2020 Census Population	7,725	22,173	55,377	21,010
	2010 Census Population	7,104	19,143	47,109	18,958
	Historical Annual Growth 2010 to 2020	0.8%	1.5%	1.6%	1.0%
	Estimated Annual Growth 2020 to 2024	1.2%	0.8%	3.0%	0.8%
	Projected Annual Growth 2024 to 2029	0.9%	0.8%	1.5%	0.6%
Households	Current Estimated Households	3,274	8,663	22,958	8,370
	2020 Census Households	3,101	8,271	19,940	7,927
	2010 Census Households	2,755	7,058	16,907	7,021
	Historical Annual Growth 2010 to 2020	1.2%	1.6%	1.7%	1.2%
	Estimated Annual Growth 2020 to 2024	1.3%	1.1%	3.4%	1.3%
	Projected Annual Growth 2024 to 2029	1.5%	1.2%	1.8%	1.1%
	Population per Household	2.5	2.6	2.7	2.6
Race	White	74.4%	75.9%	76.6%	75.8%
	Black or African American	7.6%	6.8%	6.8%	7.2%
	American Indian	0.4%	0.4%	0.3%	0.4%
	Asian	4.3%	4.3%	3.7%	3.9%
	Pacific Islander	0.3%	0.2%	0.2%	0.2%
	2 or More Races	10.1%	9.6%	9.6%	9.5%
	Other Races	3.0%	2.8%	2.8%	3.1%
	Hispanic Origin	10.8%	10.3%	10.2%	10.5%