

Corkscrew Village
Estero, Florida

1 Mile Radius

3 Mile Radius

5 Mile Radius

10 Minute Drive

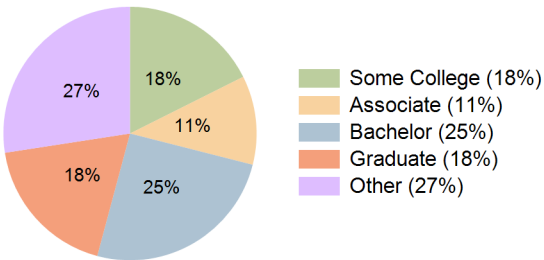
Current Year Demographics

Current Population	4,428	45,464	89,393	50,287
Total Daytime Pop	8,929	47,157	95,614	53,742
Daytime Workers	5,990	19,943	43,533	24,021
Average Household Income	\$144,573	\$128,929	\$135,032	\$124,878
Median Household Income	\$98,354	\$89,328	\$93,869	\$88,431
Total Households	2,117	21,090	38,536	23,030
Median Home Value	\$474,642	\$451,039	\$478,250	\$439,945
Bachelors Degree	25.8%	26.0%	27.1%	25.2%
Graduate Degree	22.6%	18.5%	19.5%	18.4%
Consumer Spending Index	127	114	119	111

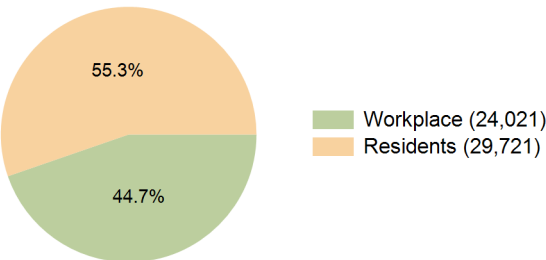
2029 Demographic Projections

Projected Population	4,563	47,745	95,359	52,732
Projected 5 Year Annual Growth Rate (Pop)	0.6%	1.0%	1.3%	1.0%
Projected Households	2,216	22,539	41,816	24,572
Projected 5 Year Annual Growth Rate (HH)	0.9%	1.3%	1.7%	1.3%

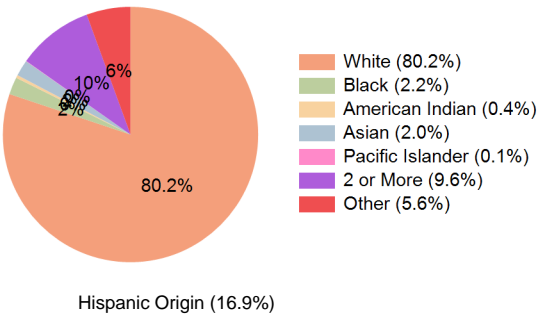
Education (10 Minute Drive)



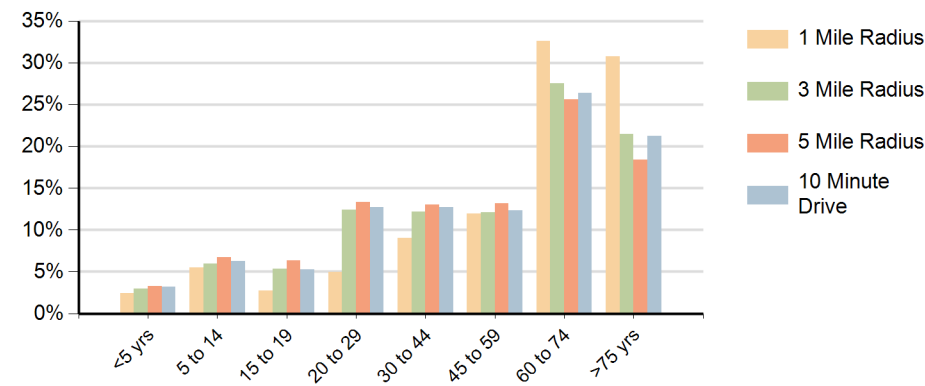
Daytime Population (10 Minute Drive)



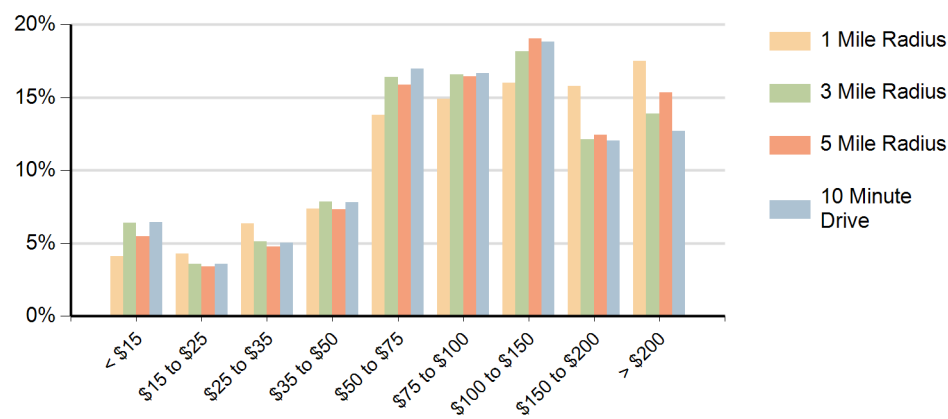
Race (10 Minute Drive)



Population by Age Range



Households by Income Range (\$000)



Corkscrew Village Estero, Florida		1 Mile Radius	3 Mile Radius	5 Mile Radius	10 Minute Drive
Population	Current Estimated Population	4,428	45,464	89,393	50,287
	2020 Census Population	4,101	43,037	82,463	47,623
	2010 Census Population	3,434	34,539	64,296	38,270
	Historical Annual Growth 2010 to 2020	1.8%	2.2%	2.5%	2.2%
	Estimated Annual Growth 2020 to 2024	1.8%	1.3%	1.9%	1.3%
	Projected Annual Growth 2024 to 2029	0.6%	1.0%	1.3%	1.0%
Households	Current Estimated Households	2,117	21,090	38,536	23,030
	2020 Census Households	1,915	19,577	35,124	21,416
	2010 Census Households	1,670	15,259	27,155	16,794
	Historical Annual Growth 2010 to 2020	1.4%	2.5%	2.6%	2.5%
	Estimated Annual Growth 2020 to 2024	2.4%	1.8%	2.2%	1.7%
	Projected Annual Growth 2024 to 2029	0.9%	1.3%	1.7%	1.3%
Race	Population per Household	2.0	2.1	2.2	2.1
	White	83.7%	81.1%	80.5%	80.2%
	Black or African American	1.1%	2.1%	2.3%	2.2%
	American Indian	0.2%	0.4%	0.3%	0.4%
	Asian	1.9%	2.1%	2.2%	2.0%
	Pacific Islander	0.1%	0.1%	0.0%	0.1%
	2 or More Races	7.7%	9.1%	9.7%	9.6%
	Other Races	5.4%	5.2%	5.0%	5.6%
Hispanic Origin		12.6%	15.8%	16.0%	16.9%