

Northgate Square
Lutz, Florida

1 Mile Radius

3 Mile Radius

5 Mile Radius

10 Minute Drive

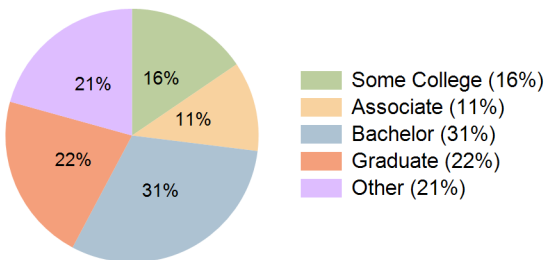
Current Year Demographics

Current Population	4,059	50,932	142,041	49,460
Total Daytime Pop	5,191	43,407	126,298	45,911
Daytime Workers	3,276	20,220	58,362	23,234
Average Household Income	\$185,828	\$146,447	\$140,887	\$141,313
Median Household Income	\$123,597	\$99,796	\$101,611	\$98,075
Total Households	1,522	19,742	56,163	19,289
Median Home Value	\$585,459	\$516,036	\$495,795	\$503,157
Bachelors Degree	32.0%	31.7%	30.7%	30.8%
Graduate Degree	30.6%	23.3%	19.3%	21.5%
Consumer Spending Index	156	125	120	121

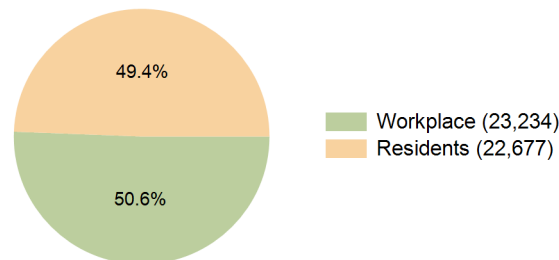
2030 Demographic Projections

Projected Population	4,174	52,643	149,455	51,184
Projected 5 Year Annual Growth Rate (Pop)	0.6%	0.7%	1.0%	0.7%
Projected Households	1,570	20,446	59,217	19,996
Projected 5 Year Annual Growth Rate (HH)	0.6%	0.7%	1.1%	0.7%

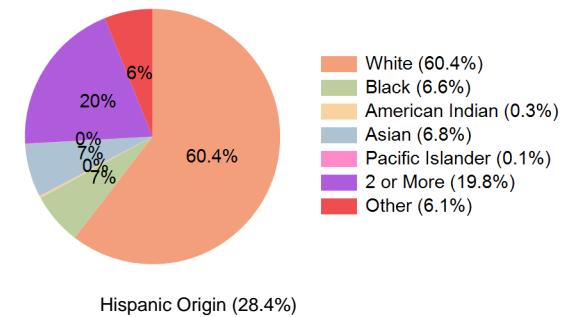
Education (10 Minute Drive)



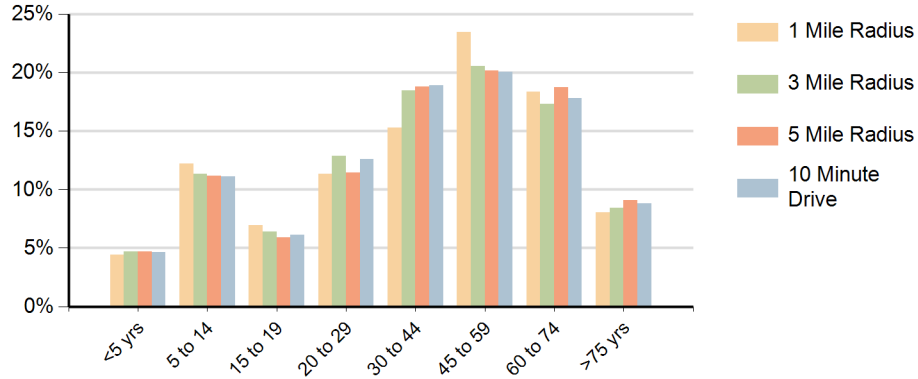
Daytime Population (10 Minute Drive)



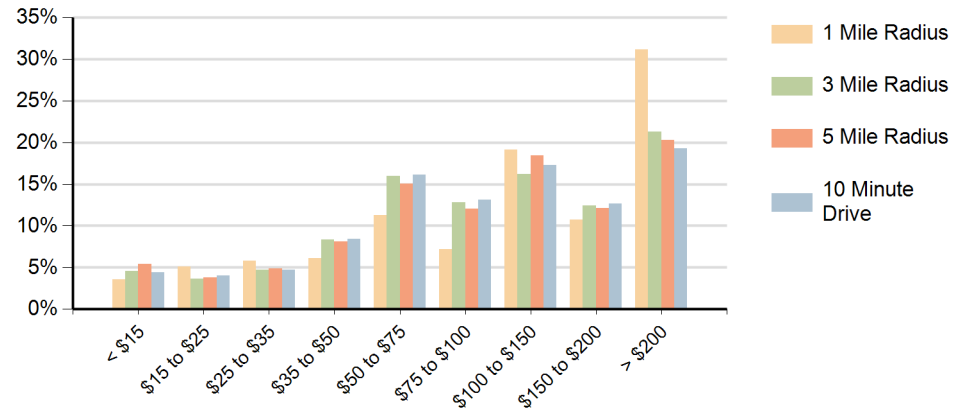
Race (10 Minute Drive)



Population by Age Range



Households by Income Range (\$000)



Northgate Square Lutz, Florida		1 Mile Radius	3 Mile Radius	5 Mile Radius	10 Minute Drive
Population	Current Estimated Population	4,059	50,932	142,041	49,460
	2020 Census Population	3,816	49,494	135,199	48,079
	2010 Census Population	3,205	43,204	119,640	42,344
	Historical Annual Growth 2010 to 2020	1.8%	1.4%	1.2%	1.3%
	Estimated Annual Growth 2020 to 2025	1.2%	0.6%	0.9%	0.5%
	Projected Annual Growth 2025 to 2030	0.6%	0.7%	1.0%	0.7%
Households	Current Estimated Households	1,522	19,742	56,163	19,289
	2020 Census Households	1,484	19,206	53,054	18,769
	2010 Census Households	1,215	17,182	47,829	16,865
	Historical Annual Growth 2010 to 2020	2.0%	1.1%	1.0%	1.1%
	Estimated Annual Growth 2020 to 2025	0.5%	0.5%	1.1%	0.5%
	Projected Annual Growth 2025 to 2030	0.6%	0.7%	1.1%	0.7%
Population per Household		2.6	2.6	2.5	2.5
Race	White	64.2%	60.4%	62.3%	60.4%
	Black or African American	4.8%	6.7%	6.6%	6.6%
	American Indian	0.3%	0.3%	0.3%	0.3%
	Asian	8.6%	7.0%	5.9%	6.8%
	Pacific Islander	0.0%	0.1%	0.1%	0.1%
	2 or More Races	17.8%	19.6%	18.9%	19.8%
	Other Races	4.4%	6.0%	5.9%	6.1%
	Hispanic Origin	24.0%	27.8%	27.6%	28.4%