

Naples Walk Naples, Florida	1 Mile Radius	3 Mile Radius	5 Mile Radius	10 Minute Drive
--------------------------------	---------------	---------------	---------------	-----------------

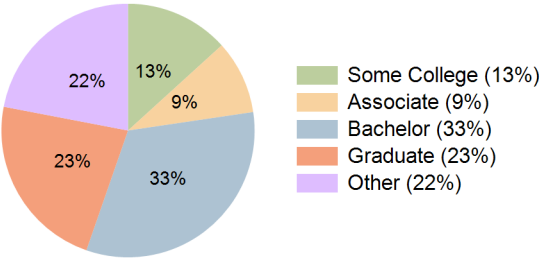
Current Year Demographics

Current Population	7,913	54,523	127,295	62,296
Total Daytime Pop	9,348	72,879	152,254	80,090
Daytime Workers	4,721	40,865	75,962	44,250
Average Household Income	\$132,208	\$151,503	\$158,614	\$150,404
Median Household Income	\$81,959	\$93,559	\$98,930	\$93,214
Total Households	4,192	26,491	59,283	29,359
Median Home Value	\$638,493	\$703,699	\$720,470	\$681,856
Bachelors Degree	30.6%	32.5%	31.8%	32.7%
Graduate Degree	23.3%	24.0%	22.8%	22.7%
Consumer Spending Index	116	133	139	131

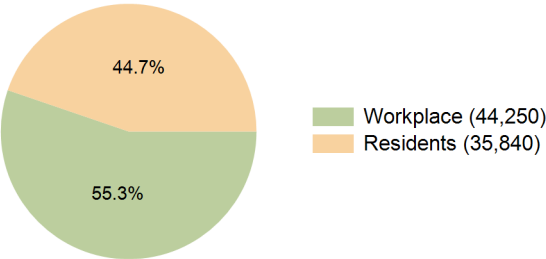
2029 Demographic Projections

Projected Population	8,087	54,274	127,197	61,976
Projected 5 Year Annual Growth Rate (Pop)	0.4%	-0.1%	0.0%	-0.1%
Projected Households	4,434	27,206	61,136	30,155
Projected 5 Year Annual Growth Rate (HH)	1.1%	0.5%	0.6%	0.5%

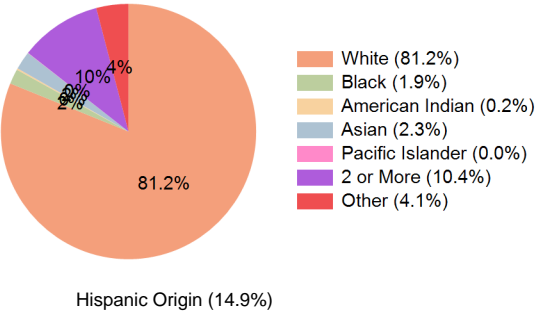
Education (10 Minute Drive)



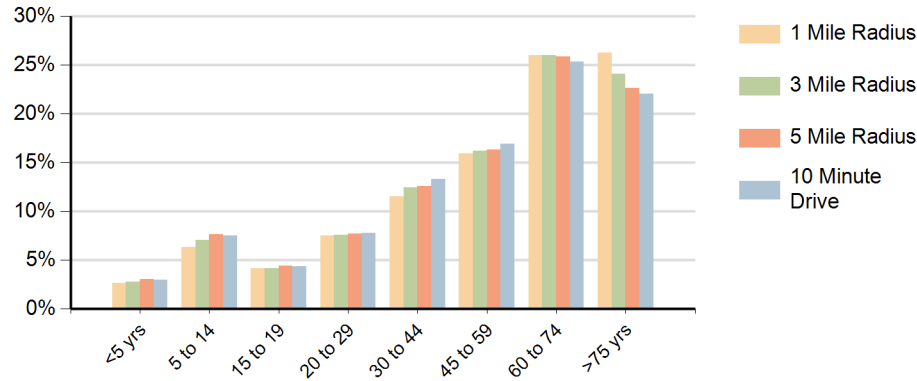
Daytime Population (10 Minute Drive)



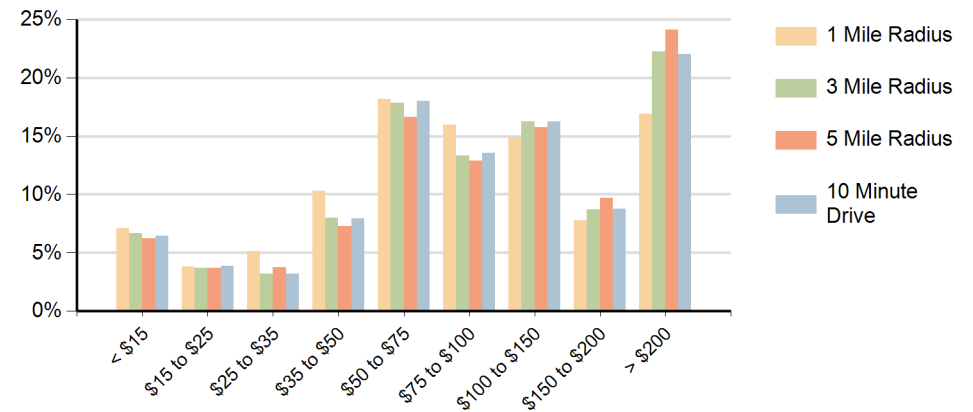
Race (10 Minute Drive)



Population by Age Range



Households by Income Range (\$000)



Naples Walk Naples, Florida		1 Mile Radius	3 Mile Radius	5 Mile Radius	10 Minute Drive
Population	Current Estimated Population	7,913	54,523	127,295	62,296
	2020 Census Population	7,676	53,947	124,506	61,604
	2010 Census Population	7,292	49,962	112,070	56,931
	Historical Annual Growth 2010 to 2020	0.5%	0.8%	1.1%	0.8%
	Estimated Annual Growth 2020 to 2024	0.7%	0.3%	0.5%	0.3%
	Projected Annual Growth 2024 to 2029	0.4%	-0.1%	0.0%	-0.1%
Households	Current Estimated Households	4,192	26,491	59,283	29,359
	2020 Census Households	3,968	25,720	57,212	28,443
	2010 Census Households	3,619	23,786	51,519	26,238
	Historical Annual Growth 2010 to 2020	0.9%	0.8%	1.1%	0.8%
	Estimated Annual Growth 2020 to 2024	1.3%	0.7%	0.8%	0.8%
	Projected Annual Growth 2024 to 2029	1.1%	0.5%	0.6%	0.5%
Race	Population per Household	1.9	2.0	2.1	2.1
	White	81.3%	81.8%	79.6%	81.2%
	Black or African American	1.7%	1.9%	2.6%	1.9%
	American Indian	0.1%	0.2%	0.2%	0.2%
	Asian	2.7%	2.2%	2.2%	2.3%
	Pacific Islander	0.0%	0.0%	0.0%	0.0%
	2 or More Races	9.7%	10.1%	10.9%	10.4%
	Other Races	4.5%	3.9%	4.5%	4.1%
Hispanic Origin		14.5%	14.3%	16.1%	14.9%