

Westchase Tampa, Florida	1 Mile Radius	3 Mile Radius	5 Mile Radius	10 Minute Drive
-----------------------------	---------------	---------------	---------------	-----------------

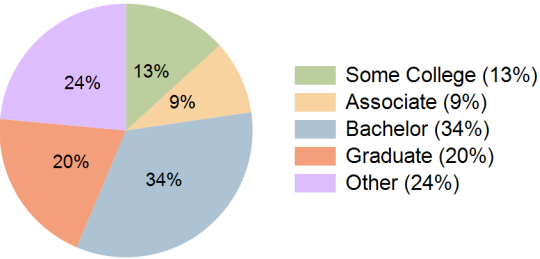
Current Year Demographics

Current Population	8,443	55,643	158,013	60,386
Total Daytime Pop	8,374	56,191	134,830	65,567
Daytime Workers	4,505	31,029	63,103	38,559
Average Household Income	\$162,891	\$151,537	\$126,021	\$141,182
Median Household Income	\$114,720	\$109,039	\$86,378	\$102,409
Total Households	3,515	21,676	62,711	23,886
Median Home Value	\$535,689	\$464,400	\$427,384	\$448,879
Bachelors Degree	42.3%	35.1%	29.8%	33.7%
Graduate Degree	20.3%	21.4%	16.2%	20.1%
Consumer Spending Index	143	133	111	124

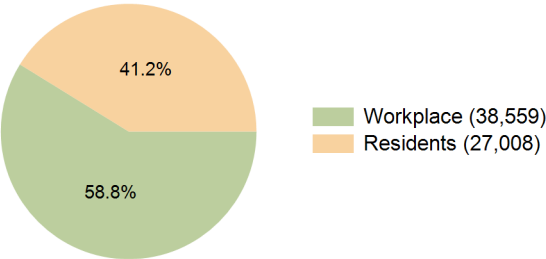
2029 Demographic Projections

Projected Population	8,467	56,125	159,398	60,981
Projected 5 Year Annual Growth Rate (Pop)	0.1%	0.2%	0.2%	0.2%
Projected Households	3,547	21,988	63,663	24,276
Projected 5 Year Annual Growth Rate (HH)	0.2%	0.3%	0.3%	0.3%

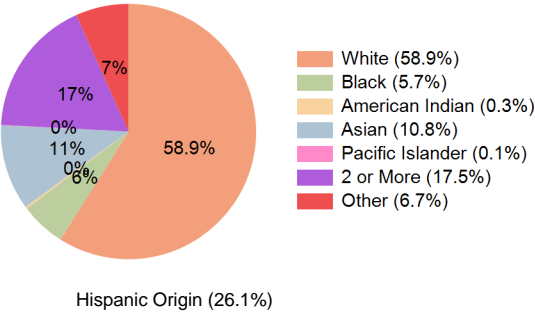
Education (10 Minute Drive)



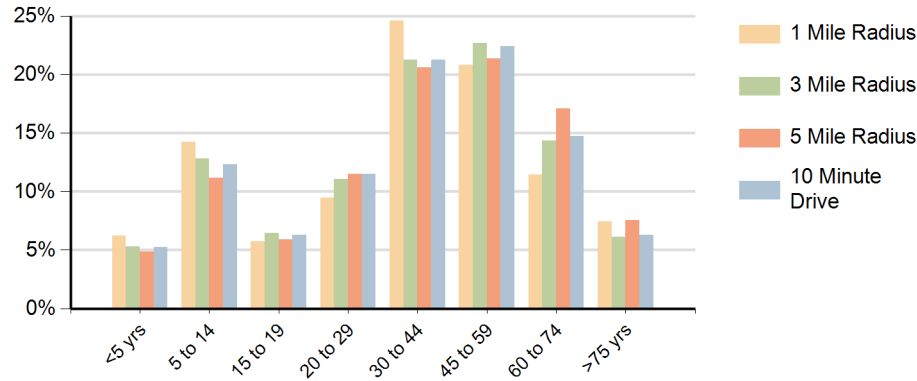
Daytime Population (10 Minute Drive)



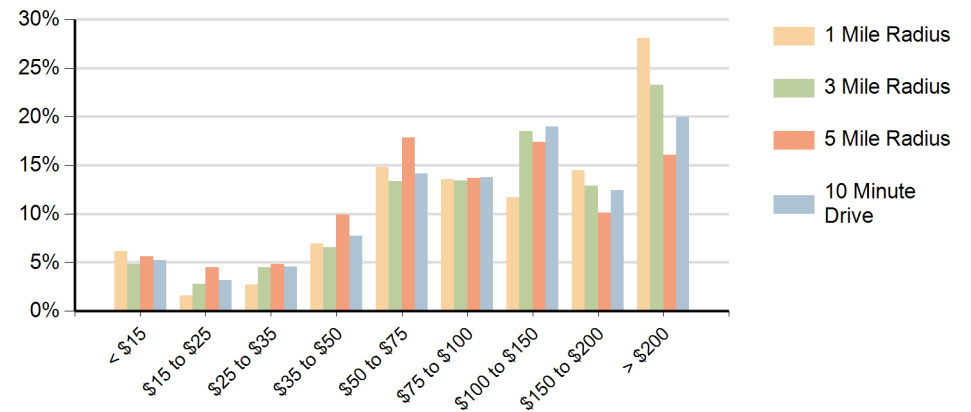
Race (10 Minute Drive)



Population by Age Range



Households by Income Range (\$000)



Westchase Tampa, Florida		1 Mile Radius	3 Mile Radius	5 Mile Radius	10 Minute Drive
Population	Current Estimated Population	8,443	55,643	158,013	60,386
	2020 Census Population	8,509	55,647	157,579	60,002
	2010 Census Population	7,547	48,123	140,607	51,507
	Historical Annual Growth 2010 to 2020	1.2%	1.5%	1.2%	1.5%
	Estimated Annual Growth 2020 to 2024	-0.2%	0.0%	0.1%	0.2%
	Projected Annual Growth 2024 to 2029	0.1%	0.2%	0.2%	0.2%
Households	Current Estimated Households	3,515	21,676	62,711	23,886
	2020 Census Households	3,521	21,600	62,147	23,625
	2010 Census Households	3,071	18,473	55,136	20,015
	Historical Annual Growth 2010 to 2020	1.4%	1.6%	1.2%	1.7%
	Estimated Annual Growth 2020 to 2024	0.0%	0.1%	0.2%	0.3%
	Projected Annual Growth 2024 to 2029	0.2%	0.3%	0.3%	0.3%
Race	Population per Household	2.4	2.6	2.5	2.5
	White	60.5%	59.8%	55.7%	58.9%
	Black or African American	4.6%	5.6%	6.1%	5.7%
	American Indian	0.2%	0.3%	0.3%	0.3%
	Asian	17.5%	11.4%	7.7%	10.8%
	Pacific Islander	0.0%	0.1%	0.1%	0.1%
	2 or More Races	12.5%	16.8%	21.3%	17.5%
	Other Races	4.7%	6.1%	8.9%	6.7%
Hispanic Origin		16.8%	24.2%	33.8%	26.1%