

Market at Colonnade Center Raleigh, North Carolina

1 Mile Radius

3 Mile Radius

5 Mile Radius

10 Minute Drive

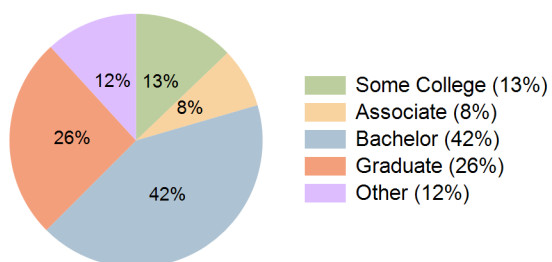
Current Year Demographics

Current Population	7,767	59,579	171,367	76,849
Total Daytime Pop	14,867	73,019	211,434	97,283
Daytime Workers	11,212	45,676	137,497	62,178
Average Household Income	\$156,952	\$150,782	\$151,180	\$156,160
Median Household Income	\$109,490	\$107,685	\$109,235	\$115,403
Total Households	3,728	27,497	78,372	34,770
Median Home Value	\$625,226	\$554,656	\$565,929	\$547,044
Bachelors Degree	37.5%	41.2%	41.7%	42.0%
Graduate Degree	30.3%	25.5%	24.8%	25.7%
Consumer Spending Index	133	129	130	133

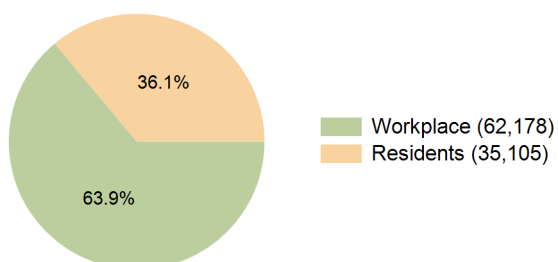
2030 Demographic Projections

Projected Population	7,524	58,746	174,246	76,758
Projected 5 Year Annual Growth Rate (Pop)	-0.6%	-0.3%	0.3%	0.0%
Projected Households	3,665	27,422	81,112	35,231
Projected 5 Year Annual Growth Rate (HH)	-0.3%	-0.1%	0.7%	0.3%

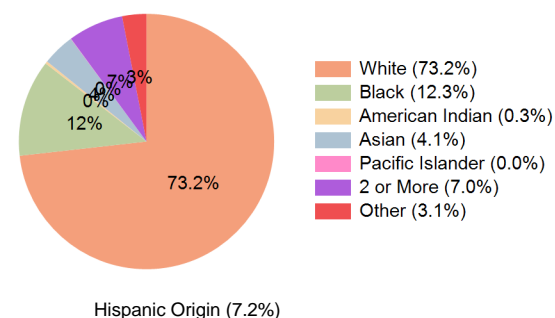
Education (10 Minute Drive)



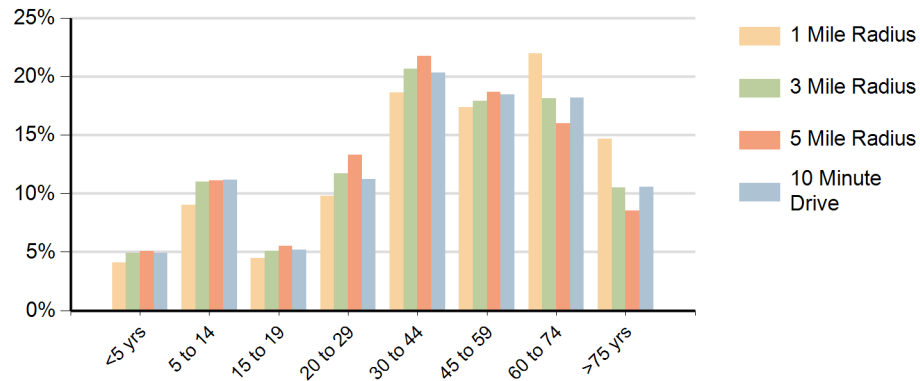
Daytime Population (10 Minute Drive)



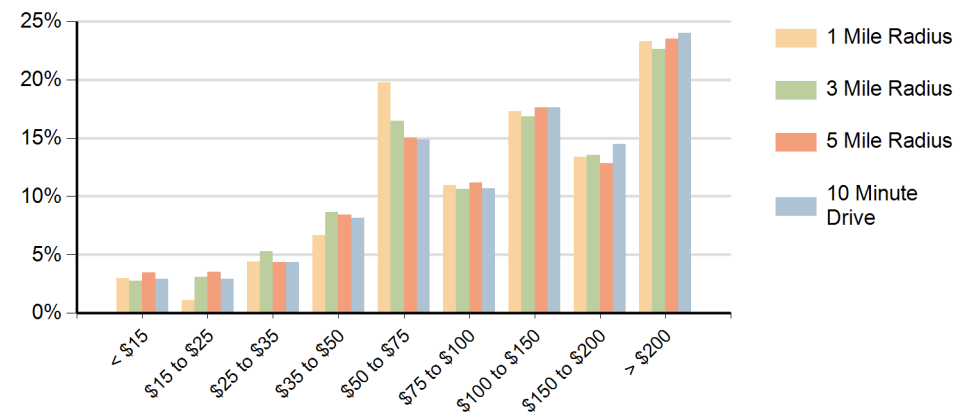
Race (10 Minute Drive)



Population by Age Range



Households by Income Range (\$000)



Market at Colonnade Center Raleigh, North Carolina		1 Mile Radius	3 Mile Radius	5 Mile Radius	10 Minute Drive
Population	Current Estimated Population	7,767	59,579	171,367	76,849
	2020 Census Population	7,933	60,288	169,109	77,615
	2010 Census Population	7,036	57,751	156,358	74,016
	Historical Annual Growth 2010 to 2020	1.2%	0.4%	0.8%	0.5%
	Estimated Annual Growth 2020 to 2025	-0.4%	-0.2%	0.3%	-0.2%
	Projected Annual Growth 2025 to 2030	-0.6%	-0.3%	0.3%	0.0%
Households	Current Estimated Households	3,728	27,497	78,372	34,770
	2020 Census Households	3,695	27,094	75,101	34,199
	2010 Census Households	3,172	25,522	67,745	31,885
	Historical Annual Growth 2010 to 2020	1.5%	0.6%	1.0%	0.7%
	Estimated Annual Growth 2020 to 2025	0.2%	0.3%	0.8%	0.3%
	Projected Annual Growth 2025 to 2030	-0.3%	-0.1%	0.7%	0.3%
Race	Population per Household	2.1	2.2	2.2	2.2
	White	74.5%	72.1%	68.9%	73.2%
	Black or African American	10.9%	13.3%	14.1%	12.3%
	American Indian	0.3%	0.3%	0.4%	0.3%
	Asian	4.4%	4.0%	4.6%	4.1%
	Pacific Islander	0.1%	0.0%	0.0%	0.0%
	2 or More Races	6.9%	6.9%	7.5%	7.0%
	Other Races	3.0%	3.3%	4.5%	3.1%
Hispanic Origin		6.7%	7.3%	9.3%	7.2%